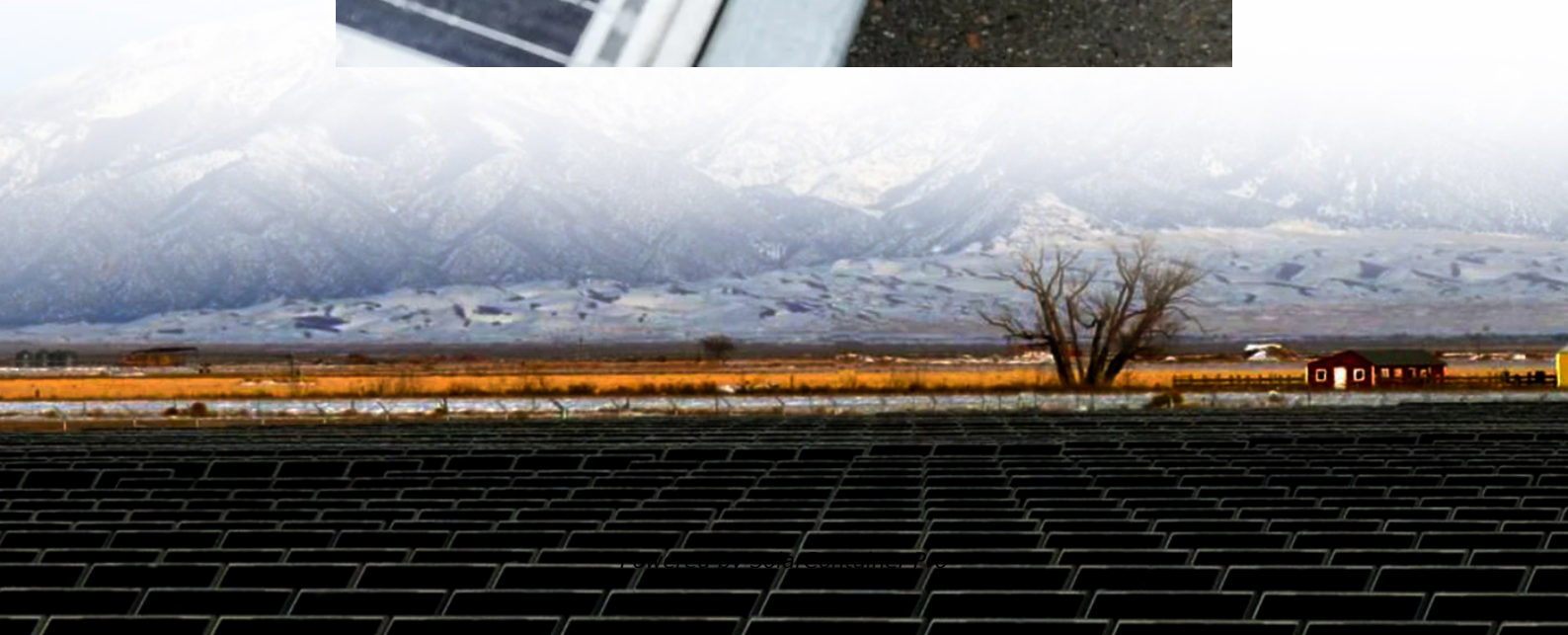


Can a 60v inverter use a 12v battery





Overview

What voltage should a 12V inverter run on?

The input voltage of the inverter should match the battery voltage. (For example 12v battery for 12v inverter, 24v battery for 24v inverter and 48v battery for 48v inverter Summary What Will An Inverter Run & For How Long?

.

What are the disadvantages of a 12 volt inverter?

The disadvantage is that the 12 V inverter will draw 5 times the current a 60 V inverter draws for the same output power. This current needs to be supplied by the step-down converter. This will also incur additional losses in the step-down converter. I'd swap the 12 V inverter for a 60 V inverter. I had a hunch. I'll make the swap.

How much power does an inverter use?

An inverter uses a small amount of energy during the conversion process. The difference between the input power and the output power is expressed in percentages. The efficiency of modern inverters is more than 92 %. This means that a maximum of 8 % of the power consumption is used to convert battery voltage to 230V/50Hz.

How many amps does a 12 volt inverter use?

For a 12 V inverter such as a Mass Sine 12/1200, consumption will be $400/10 = \text{approx. } 40 \text{ amps}$. For a 24 V inverter, say a Mass 24/1500, the corresponding figure is $400/20 = \text{approx. } 20 \text{ amps}$. It is important to remember that this is only an approximation: The actual consumption will tend to be some 5 to 15 % less, depending on the load type.

Which Inverter should I Choose?

A 500VA inverter would be suitable, offering a balance between performance



and battery life. For extended run times, consider larger inverters or additional batteries to meet higher power demands. Inverter Efficiency: Higher efficiency reduces energy loss and maximizes battery usage.

What size inverter for a 200Ah battery?

To determine the appropriate inverter size for a 200Ah battery, consider the following: A 500VA inverter would be suitable, offering a balance between performance and battery life. For extended run times, consider larger inverters or additional batteries to meet higher power demands.



Can a 60v inverter use a 12v battery



12v or 60v Inverter. Does it Matter? , Electronics Forums

The disadvantage is that the 12 V inverter will draw 5 times the current a 60 V inverter draws for the same output power. This current needs to be supplied by the step-down ...

[WhatsApp](#)

Can I use a battery as an input source for a mppt charge controller

And of course you want to make sure the Anderson connector is properly rated for the amperage required to feed your inverter or other loads running through it. One other option ...

[WhatsApp](#)



[How Long Will a 12V Battery Last When Using an Inverter](#)

A 12V battery is a common power source for many off-grid applications, including RVs, solar power systems, and backup energy solutions. If you're using an inverter to convert ...

[WhatsApp](#)

I need a way to keep a 12v battery topped off with a 60v

I already tried just connecting a 10 amp 60v to 12v converter to the 60v and 12v battery and it blew it's caps out as soon as I turned on the



power on the 60v side. I just want to trickle ...

[WhatsApp](#)



[LiFePO4 Battery Bank in Series \(48V or 60V\) balancer](#)

Hello folks, I intend to series-connect four or five 12V Lithium batteries to make a 48V or 60V bank for my residential solar project. From my reading here and here, I understand ...

[WhatsApp](#)



what if I connect a battery bank to my grid tie inverter Instead of

Hi Guys, putting together a system now Where, i will be using two GTIL2s One running 220v off 60v PV, The other will be running off battery 24v at Night. With the new Tie in Limiter the Sky ...

[WhatsApp](#)



[How Many Watts Can a 60 Amp Charge Controller Handle?](#)

While 60 amp charge controllers like the PowMr Controller are ideal for 24V and 48V solar panels, a 12V solar panel requires a 20 amp controller. The most common charge controllers are sold ...

[WhatsApp](#)





Calculate Battery Size For Any Size Inverter (Using Our Calculator)

To recharge your battery from time to time you would need the right size solar panel to do the job! Read the below article to find out the suitable solar panel size for your battery bank

[WhatsApp](#)



Frequently Asked Questions about Inverters

Yes, you can. All Mastervolt sine wave inverters can easily and safely supply a computer without the slightest problem or risk. In fact, the output voltage from an inverter is often better than that ...

[WhatsApp](#)

What does a power inverter do, and what can I use one for?

The inverter draws its power from a 12 Volt battery (preferably deep-cycle), or several batteries wired in parallel. The battery will need to be recharged as the power is drawn out of it by the ...

[WhatsApp](#)



12v or 60v Inverter. Does it Matter? , Electronics Forums

Hello! I'm in the middle of a build. It's a lithium battery pack (aka solar generator). The plans called for 60 volt 2500 watt DC>AC inverter. I accidentally bought a 12 volt. The ...

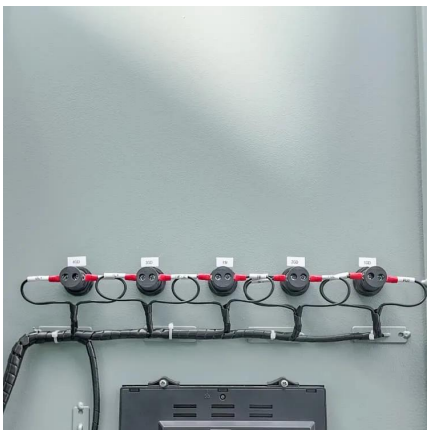
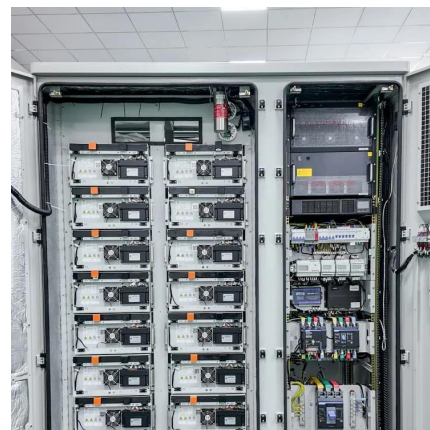
[WhatsApp](#)



Calculate Battery Size For Any Size Inverter (Using Our Calculator)

Inverter Efficiency: Lithium batteries generally work well with modern inverters, but checking the inverter's efficiency rating is advisable. Efficiency impacts the actual power ...

[WhatsApp](#)



How Inverters Work with Batteries: A Beginner's Complete Guide ...

An inverter changes DC power from a 12 Volt deep-cycle battery into AC power. The battery discharges while the inverter provides power. You can recharge the battery using ...

[WhatsApp](#)

[Using 5x 12volt batteries for 60V.. CC-OK Inverter-NOK](#)

The FM80 is designed for battery voltages from 12V to 60V nominal. The inverter is designed for a DC battery voltage input of 40V - 64V. It would appear that range will operate ...

[WhatsApp](#)





[How long can I run the power inverter on my battery?](#)

Note: If you intend to use power tools for commercial use, or any load of 200W for more than 1 hour regularly (between battery recharging) we recommend installing an auxiliary battery to ...

[WhatsApp](#)

Can grid-tie solar inverters run on batteries instead of photovoltaic

You can however, have the battery inputs correctly connected to the inverter, an AC grid or generator connection and NO PV, then just charge your batteries through the build in ...

[WhatsApp](#)



[Can i use a 12v instead of a 60v : r/ebikes](#)

Having more amps won't help. The motor can only pull amps. The battery can't push them, and your wiring can't take more amps anyway. So what the motor controller will see is just 12 volts. ...

[WhatsApp](#)

Understanding Battery Capacity and Inverter Compatibility

Inverter Efficiency: Lithium batteries generally work well with modern inverters, but checking the inverter's efficiency rating is advisable. Efficiency impacts the actual power ...

[WhatsApp](#)



Contact Us

For catalog requests, pricing, or partnerships, please visit:
<https://www.straighta.co.za>