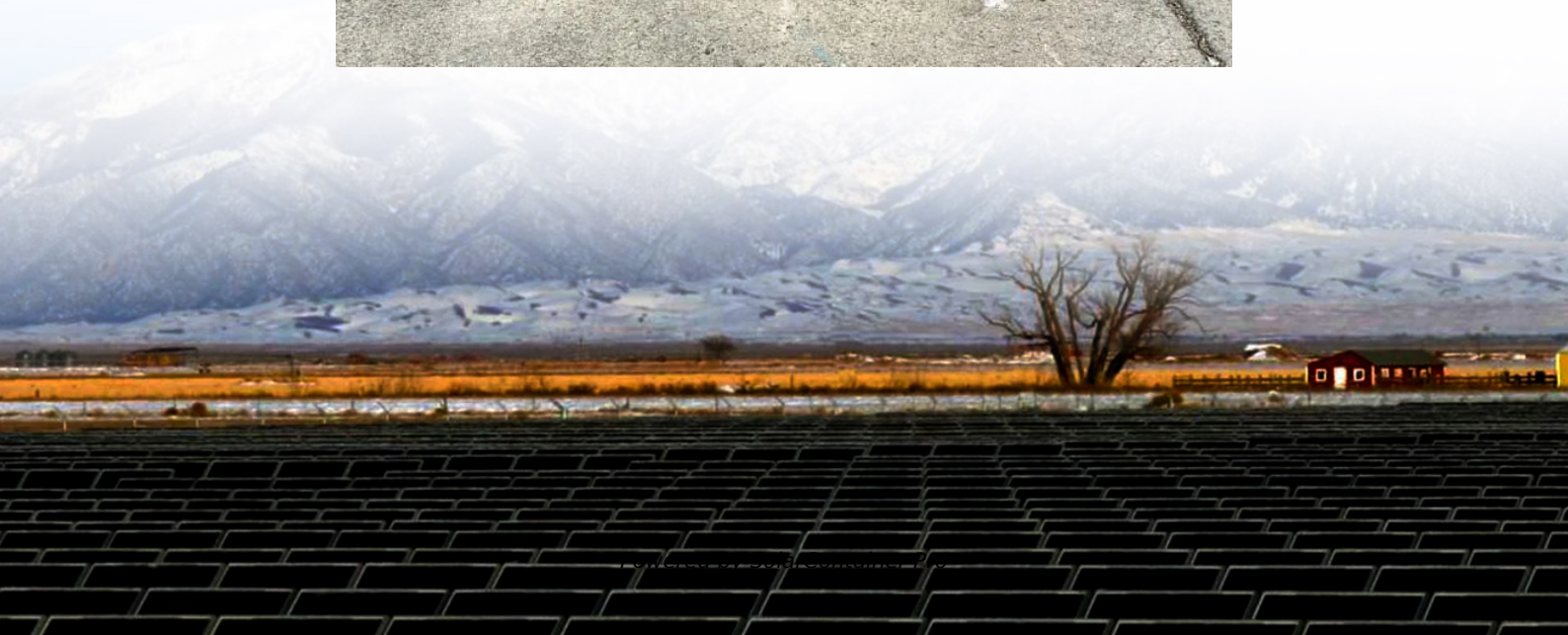


# **Can a 48v inverter be used with 60v voltage**





## Overview

---

If 60V is the nominal voltage, no way they'll work. Checking a couple of the manuals shows 60VDC overcharge protection in specifications. Most 48V inverters peak at 64V. If 60V is the nominal voltage, no way they'll work. Do 48V power inverters work?

48V power inverters work perfectly in 48V solar systems, which are usually either small commercial or large residential. These inverters are typically paired with 48V PV modules and batteries of a comparable voltage.

Do I need a 12V or 48V inverter?

Simply put, if you have a 12V system, you need a 12V inverter; a 48V system requires a 48V inverter. Standard Pure Sine Wave inverters simply change DC power to AC power. Inverter Chargers handle this function plus allow you to charge your batteries off shore power or a generator. Renogy's 3500W Solar Inverter Charger is designed for a 48V system.

Should I use a 60V to 48V converter?

If you want to use all the remaining cells a "dc to dc converter 60V to 48V" would do just that. However they are hard to get for that voltage and high amps. if your controller can take 60v it will be fine just keep an eye on motor temps and avoid WOT if you find it gets hot Dana Point So. Cal It's. Best to have one big battery.

Can a 48 volt inverter run a battery?

When you use a 48-Volts inverter, you can use regular and more flexible connectors to connect the inverter to the battery bank. This is so because the thinner the wire, the higher the resistance. And if your DC voltage is lower, you will pass more current through the wires, and they can get very hot, and you lose a lot of battery power.

Should I use a 24 volt or 48 volt inverter?



I suggest you use A 24-volt inverter or 36-volt inverter or 48-volt inverter when you need to power appliances over 3000 Watts. You may decide to use them even for appliances that are 2000Watts. When you use a 48-Volts inverter, you can use regular and more flexible connectors to connect the inverter to the battery bank.

Can a 48V inverter be rated at 2 kVA?

In this post I have explained a simple 48V inverter circuit which may be rated at as high as 2 KVA. The entire design is configured around a single IC 4047 and a few power transistors. I am a big fan of u.i am a wisp. i need an inverter design with 48volt DC input and 230volt output supply and output power in the range up to 500w.



## Can a 48v inverter be used with 60v voltage

---



[How to step down from 60V so my 48V inverter will work](#)

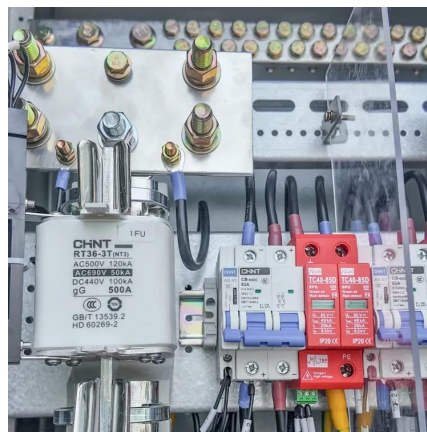
For your inverter to work you will need both a battery system and charge controller. Solar panels will not produce the correct amount of voltage for the inverter to run ...

[WhatsApp](#)

### Can a 1000W 48V Inverter Be Connected to 60V Technical ...

Let's break this down: inverters are like the "translators" of power systems - they need precise voltage ranges to function safely. Connecting a 48V device to 60V is like trying to fit a size-10 ...

[WhatsApp](#)



### Auto Pure Sine Wave Inverter 5000W 6000W 7000W 8000W Voltage ...

Pure sine wave inverter: this is a true pure sine wave inverter, stable and efficient. It can convert 12V/24V/48V/60V DC to 110V/220VAC. It can be used in emergency, camping, car, home, RV, ...

[WhatsApp](#)

### Anyone know the battery voltage limits for growatt 48v inverters?

If 60V is the nominal voltage, no way they'll work. Checking a couple of the manuals shows 60VDC overcharge protection in specifications.



Most 48V inverters peak at 64V.

[WhatsApp](#)



[How to use a 60v battery pack on 48v motor](#)

If the motor's coil is "tuned" to be most efficient within a certain voltage range then too many volts can cause arcing and result in a meltdown. Too many volts can also result in ...

[WhatsApp](#)

[Using 5x 12volt batteries for 60V.. CC-OK  
Inverter-NOK](#)

The inverter is designed for a DC battery voltage input of 40V - 64V. It would appear that range will operate the inverter, but there's no mention of the upper voltage limit on ...

[WhatsApp](#)



[SOLIX F3800 Only 60V Max PV Input??? : r/anker](#)

Nope. 60V 25A input means you are going to have a bad time charging this with more than 500W of solar. The amperage is so high that without super THICC and heavy wires, you're just going ...

[WhatsApp](#)





### **Pure Sine Wave Inverter,3000w 4000w 5000w 6000w 7000w 8000w Power**

Simply in the 12V/24V/48V/60V battery system to power the equipment at home or outdoors in response to emergencies, hurricanes, storms and power outages. Pure sine wave inverterThis ...

[WhatsApp](#)



### **NEW Power Pure Sine Wave Solar Inverter 8000W 12V 24V 48V 60V ...**

The pure sine wave inverter does not have the problem of electromagnetic pollution in the power grid and can provide high-quality alternating current. 400W (24V truck). such as fridge, icebox, ...

[WhatsApp](#)



### **Can a 48V Inverter Safely Connect to a 60V Battery Key Insights**

While technically possible through voltage regulation, connecting 48V inverters to 60V batteries significantly compromises safety and efficiency. For mission-critical applications, always match ...

[WhatsApp](#)



### **Amazon : BTURYT 6000W Pure Sine Wave Inverter 12V 24V 48V 60V ...**

[High efficiency conversion]: The inverter provides 12V 24V 48V 60V DC to 110/120V 220V/230V AC pure sine wave technology, with high conversion efficiency (>90%), low no-load loss, and ...

[WhatsApp](#)



### [Can a 48V Motor Handle 60V? Understanding Voltage ...](#)

In summary, while a 48V motor may technically handle 60V, it is not advisable due to potential issues with performance and durability. The lower voltage will typically push about ...

[WhatsApp](#)



### **Anyone know the battery voltage limits for growatt 48v inverters?**

I've just been given 40 e-bike batteries that are 60v and 763wh each so a hell of a lot of power capacity between them all. I'm wondering if they'll be fine on a growatt 48v ...

[WhatsApp](#)

### **Can a 60V Inverter Work with a 48V Battery Compatibility Explained**

Understanding Voltage Compatibility Many solar energy users ask: "Can my 48V battery bank power a 60V inverter?" The short answer is yes - but it's like trying to drink a thick milkshake ...

[WhatsApp](#)





### **Can 48V and 60V Inverters Be Used Together A Comprehensive ...**

Wondering whether 48V and 60V inverters can operate simultaneously in renewable energy systems? This article explores compatibility, real-world applications, and optimization ...

[WhatsApp](#)

## **Contact Us**

---

For catalog requests, pricing, or partnerships, please visit:  
<https://www.straighta.co.za>