

Can a 24v inverter use 7 strings of lithium batteries





Overview

Yes, you can connect an inverter to a lithium battery. Lithium batteries, particularly Lithium Iron Phosphate (LiFePO₄) batteries, are well-suited for use with inverters due to their high efficiency, lightweight design, and ability to deliver consistent power. How do I choose a lithium battery for inverter use?

When selecting a lithium battery for inverter use, it is essential to understand the key specifications: Voltage (V): Most inverter systems use 12V, 24V, or 48V batteries. Higher voltage systems are more efficient for larger power loads. Capacity (Ah or Wh): Amp-hours or Watt-hours indicate how much energy the battery can store and deliver.

What is a lithium battery for inverter?

Lithium offers unmatched performance, a longer lifespan, and better efficiency than traditional batteries. Whether you're setting up a home backup system, solar power solution, or mobile energy unit, this guide will walk you through everything you need to know about lithium batteries for inverters. Part 1.

Which battery should I use for my inverter?

When it comes to powering your inverter, there are a few alternative options to consider aside from lithium batteries. While lithium batteries have gained popularity due to their numerous advantages, they may not be the right choice for everyone. One alternative option is lead-acid batteries.

Can a solar inverter be used with a lithium battery?

Integrating a solar inverter with a lithium battery can take your renewable energy setup to the next level. This combination allows for better energy storage, improved efficiency, and greater resilience during power outages. LiFePO₄ batteries are particularly well-suited for solar applications because of their thermal stability and long cycle life.

Can a 12V inverter be connected to a 24v battery?



Let's say you have a 12V inverter and try to connect two 12V batteries in series. You would end up inputting 24V to the inverter and cause an overload. This could cause damage to your equipment, at the very least your inverter will shut down to protect itself.

How much battery do I need to run a 3000-watt inverter?

You would need around 24v 150Ah Lithium or 24v 300Ah Lead-acid Battery to run a 3000-watt inverter for 1 hour at its full capacity Here's a battery size chart for any size inverter with 1 hour of load runtime Note! The input voltage of the inverter should match the battery voltage.



Can a 24v inverter use 7 strings of lithium batteries



Best 12V, 24V, 36V, and 48V Lithium Deep Cycle Battery for a Power Inverter

Using a 12V battery on a 24V inverter won't just reduce efficiency--it may trigger low-voltage shutdowns or overwork the inverter's boost converter. Conversely, a 48V battery ...

[WhatsApp](#)

Best 12V, 24V, 36V, and 48V Lithium Deep Cycle Battery for a ...

Using a 12V battery on a 24V inverter won't just reduce efficiency--it may trigger low-voltage shutdowns or overwork the inverter's boost converter. Conversely, a 48V battery ...

[WhatsApp](#)



Calculate Battery Size For Any Size Inverter (Using Our Calculator)

No, you can't run a normal off-grid power inverter without batteries. You might be thinking of connecting directly to a solar panel, but this will deliver very poor ...

[WhatsApp](#)

How many series strings of batteries can I have in parallel.

Yes, I'm creating series strings and then putting them in parallel. So to make up the 24V I am putting 2, 12V batteries in series but to increase



the capacity I want to add more ...

[WhatsApp](#)



LifePo4 batteries in 2S2P vs 2P2S for my 24V inverter setup?

It looks like most setups configure things in 2S2P (two strings of 2x12v inseries) and the two strings connected in parallel. Recently I have been learning about the problems ...

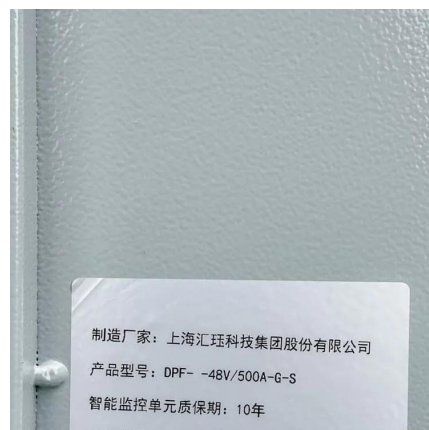
[WhatsApp](#)



[Connecting Multiple Batteries to an Inverter: Easy Guide](#)

No, you can't run a normal off-grid power inverter without batteries. You might be thinking of connecting directly to a solar panel, but this will deliver very poor performance.

[WhatsApp](#)



Calculate Battery Size For Any Size Inverter (Using Our Calculator)

You would need around 24v 150Ah Lithium or 24v 300Ah Lead-acid Battery to run a 3000-watt inverter for 1 hour at its full capacity. Here's a battery size chart for any size inverter ...

[WhatsApp](#)





[Two 12 volt Lifepo4 in series VS. One 24 Volt?](#)

Im in the planning stages of a solar system and thinking of going with 24 volts system. what's your opinion re Two 12 volt in series vs. one 24 volt (Lifepo4 of course). I like ...

[WhatsApp](#)



LifePo4 batteries in 2S2P vs 2P2S for my 24V inverter setup?

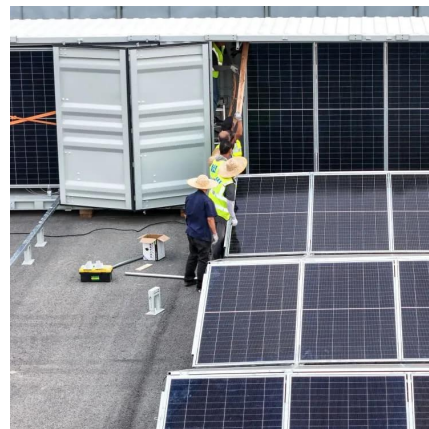
I have 4x LiTime 12V 100AH batteries and my MPP inserter runs at 24V. It looks like most setups configure things in 2S2P (two strings of 2x12v inseries) and the two strings ...

[WhatsApp](#)

Compatibility of Lithium-Ion Batteries with Existing Inverters

Some may be specifically designed for traditional batteries, while others can seamlessly integrate with lithium-ion batteries. Check your inverter's specifications to ensure compatibility.

[WhatsApp](#)



Understanding the Basics of Connecting Lithium Batteries to Inverters

Most inverters are designed for 12V, 24V, or 48V systems, so the battery should match this requirement. Also, ensure the inverter's power rating (in watts) can handle the load ...

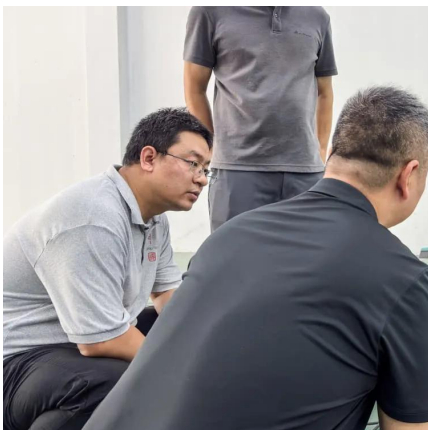
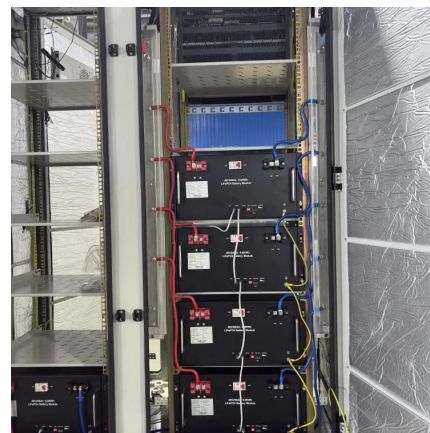
[WhatsApp](#)



[How Many Batteries can Be Connected To An Inverter?](#)

The battery capacity cannot exceed the charging current limits, otherwise the battery will take too long to charge or not all. This applies to all types of solar inverters regardless of size. The ...

[WhatsApp](#)



[Can I Connect Inverter to Lithium Battery?](#)

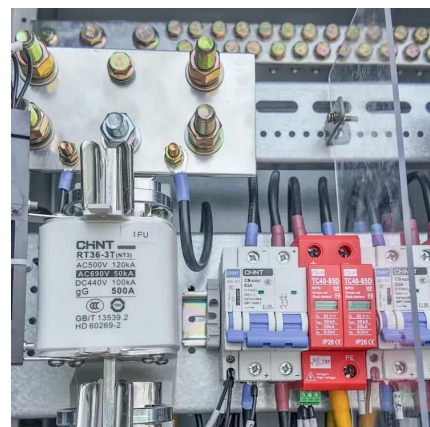
Yes, you can connect an inverter to a lithium battery. Lithium batteries, particularly Lithium Iron Phosphate (LiFePO4) batteries, are well-suited for use with inverters due to their ...

[WhatsApp](#)

[Can Lithium Batteries Work With Any Type of Inverter?](#)

When setting up solar energy systems or home energy storage, a common question arises: Are lithium batteries compatible with all inverters? The short answer is no - proper ...

[WhatsApp](#)





Contact Us

For catalog requests, pricing, or partnerships, please visit:
<https://www.straighta.co.za>