

Can a 12v inverter use a 60v battery





Overview

Yes, you can attach a small inverter directly to a battery, but doing it safely requires understanding voltage compatibility, wire sizing, and overload risks. Many DIYers assume it's as simple as clipping on cables—until sparks fly or devices fail. How many batteries should a 12 volt inverter use?

It may be advisable to operate the inverter from a bank of 12 Volt batteries of the same type in a "parallel" configuration. Two such batteries will generate twice the amp/hours of a single battery; three batteries will generate three times the amp/hours, and so on.

What is a 12V DC power inverter?

This is where a power inverter comes in. Definition and Working Principle A 12V DC power inverter is a device that converts low-voltage direct current (DC) power from a 12V battery (such as a car battery or deep-cycle battery) into 120V alternating current (AC) power, making it suitable for household appliances and electronic devices.

Which 12V power inverter is best?

For reliability and performance, Topbull 12V power inverters are highly recommended. Known for their robust design and superior efficiency, Topbull's inverters provide stable power for a wide range of applications. Here are three excellent options.

What are the disadvantages of a 12 volt inverter?

The disadvantage is that the 12 V inverter will draw 5 times the current a 60 V inverter draws for the same output power. This current needs to be supplied by the step-down converter. This will also incur additional losses in the step-down converter. I'd swap the 12 V inverter for a 60 V inverter. I had a hunch. I'll make the swap.

Are 12V inverters commonly used in RVs and solar power systems?



Yes, 12V inverters are commonly used in RVs and solar power systems. When choosing an inverter for these setups, ensure that it is compatible with your battery bank and solar panel capacity. This ensures your system runs efficiently and can handle the load of various devices without issues.

What is a 12V car power inverter?

A 12V car power inverter is a must-have for road trips, mobile workstations, and emergency preparedness. It allows drivers and passengers to charge and use electronic devices directly from the vehicle's battery or cigarette lighter port. Devices Powered: Laptops, smartphones, car refrigerators, small power tools, portable gaming consoles.



Can a 12v inverter use a 60v battery



12 Volt DC Power Inverter: In-Depth Learning and Buying Guide

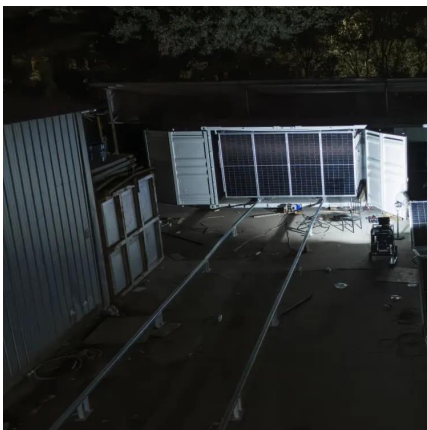
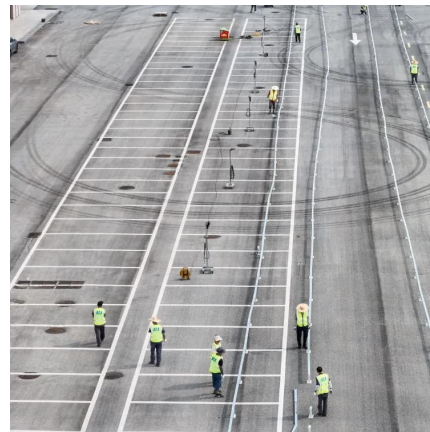
The battery capacity plays a crucial role in how long your 12V inverter can run appliances before needing a recharge. Deep-cycle batteries, which are designed to be ...

[WhatsApp](#)

CAN definition in American English , Collins English Dictionary

You use can to indicate that someone has the ability or opportunity to do something. Don't worry yourself about me, I can take care of myself. I can't give you details because I don't actually ...

[WhatsApp](#)



[How long can I run the power inverter on my battery?](#)

Note: If you intend to use power tools for commercial use, or any load of 200W for more than 1 hour regularly (between battery recharging) we recommend installing an auxiliary battery to ...

[WhatsApp](#)

[Can I Attach My Small Inverter Directly to the Battery?](#)

Yes, you can attach a small inverter directly to a battery, but doing it safely requires understanding voltage compatibility, wire sizing,



and overload risks. Many DIYers assume it's ...

[WhatsApp](#)



[Can i use a 12v instead of a 60v : r/ebikes](#)

Having more amps won't help. The motor can only pull amps. The battery can't push them, and your wiring can't take more amps anyway. So what the motor controller will see is just 12 volts.
...

[WhatsApp](#)

[What size inverter can you run off a car battery?](#)

What size inverter can you run off a car battery?
A typical 12-volt car battery can safely support an inverter ranging from about 150 watts up to 600 watts for regular use without ...

[WhatsApp](#)



[Using 5x 12volt batteries for 60V.. CC-OK Inverter-NOK](#)

The FM80 is designed for battery voltages from 12V to 60V nominal. The inverter is designed for a DC battery voltage input of 40V - 64V. It would appear that range will operate ...

[WhatsApp](#)



How Inverters Work with Batteries: A Beginner's Complete Guide ...

An inverter changes DC power from a 12 Volt deep-cycle battery into AC power. The battery discharges while the inverter provides power. You can recharge the battery using ...

[WhatsApp](#)



what if I connect a battery bank to my grid tie inverter Instead of

Hi Guys, putting together a system now Where, i will be using two GTIL2s One running 220v off 60v PV, The other will be running off battery 24v at Night. With the new Tie in Limiter the Sky ...

[WhatsApp](#)

12v or 60v Inverter. Does it Matter? , Electronics Forums

The disadvantage is that the 12 V inverter will draw 5 times the current a 60 V inverter draws for the same output power. This current needs to be supplied by the step-down ...

[WhatsApp](#)



Understanding Battery Capacity and Inverter Compatibility

Inverter Efficiency: Lithium batteries generally work well with modern inverters, but checking the inverter's efficiency rating is advisable. Efficiency impacts the actual power ...

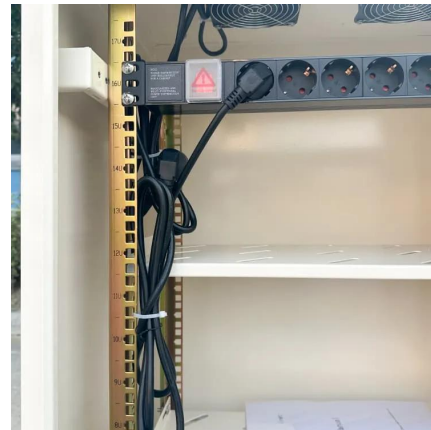
[WhatsApp](#)



Can grid-tie solar inverters run on batteries instead of photovoltaic

You can however, have the battery inputs correctly connected to the inverter, an AC grid or generator connection and NO PV, then just charge your batteries through the built in ...

[WhatsApp](#)



Most Greenworks batteries are interchangeable (40v, 60v, etc

Nope, nothing is compatible across voltages. I think a defective chatbot wrote that website. All 40v batteries are mostly compatible with all most 40v tools. TIL 40v G Max items are the exception ...

[WhatsApp](#)

Contact Us

For catalog requests, pricing, or partnerships, please visit:
<https://www.straightta.co.za>