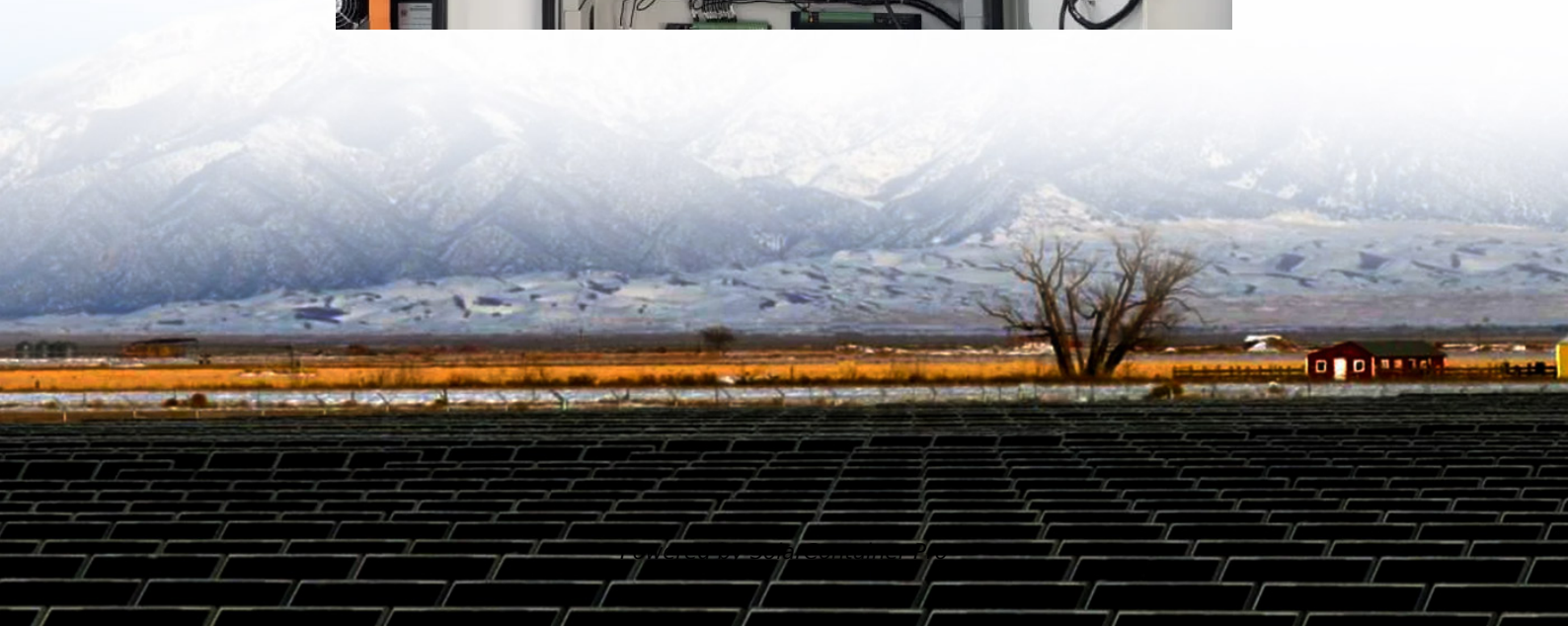


Can a 12v inverter use 9 volts





Overview

A 12 volt inverter requires an input voltage between 11 and 14 volts, similar to a car battery. A 9 volt battery does not meet this requirement. This low voltage may prevent the inverter from providing the necessary output voltage. Can a 12V power supply power a 9V device?

When it comes to powering a 9V device, there are alternative options available if a 12V power supply is not suitable or available. One of the most common alternatives is using a DC-DC converter. This device converts the higher voltage from the 12V power supply to the desired 9V output.

What is the difference between 12V and 9V?

A device labeled as 12V requires a power supply that provides a constant 12 volts of electrical potential difference, whereas a 9V device necessitates a 9-volt power source. The variance in voltage requirements stems from the internal components and circuitry of the devices. Different components have specific voltage needs to function optimally.

How do I convert a 12V power supply to 9V?

Another option is to use a step-down voltage converter or a voltage divider circuit to bring the 12V supply down to the required 9V. These devices can be easily found and are relatively inexpensive. Additionally, it is crucial to double-check and confirm the polarity of both the power supply and the device.

What voltage is a 12V inverter?

Inverters come in various configurations, each designed for specific power systems. Common rated input voltages include 12V, 24V, and 48V. The choice depends on the application, the size of the power system, and the available power source. A 12V inverter is commonly used for smaller applications, such as in vehicles or small off-grid setups.

Can a 12v plug fit a 9V plug?



While a 12V plug may physically fit into a 9V device, the higher voltage can cause damage or malfunction. It is crucial to ensure that the voltage of the plug matches the device's requirements to avoid potential hazards and preserve the longevity of the device.

What is a safe voltage for a 12V inverter?

For a 12V inverter, the maximum input inverter voltage is typically around 16VDC. This safety margin provides a buffer to accommodate fluctuations in the power source and protect the inverter from potential damage. What happens if voltage is too high for inverter?



Can a 12v inverter use 9 volts



Can I Use A 24V Battery Bank With A 12V Inverter? Compatibility ...

Yes, you can use a 24V battery bank with a 12V inverter, but you need a Switched-Mode Power Supply (SMPS). The SMPS will convert the 12V to the necessary 28V for ...

[WhatsApp](#)

[Calculating Pure Sine Wave Inverter power draw](#)

Documented in this article are common questions relating to the inverter draw (inverter amp draw or inverter current draw) for 12v (or 24v) batteries. If you're looking for information relating to ...

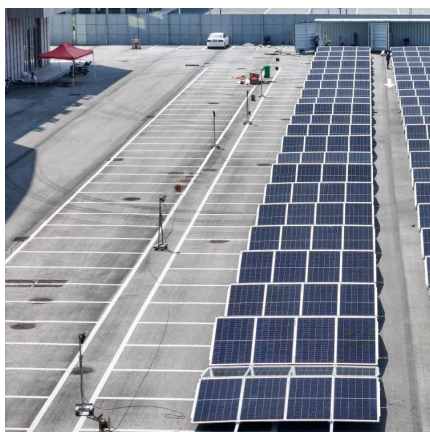
[WhatsApp](#)



12 Volt DC Power Inverter: In-Depth Learning and Buying Guide

A 12V DC power inverter is a device that converts low-voltage direct current (DC) power from a 12V battery (such as a car battery or deep-cycle battery) into 120V alternating ...

[WhatsApp](#)



12V vs 24V Inverters Key Differences and Which One is Right for ...

Why Does Voltage Matter? Voltage affects the overall performance of the inverter system. A 12V inverter is designed to handle lower power



output and is typically suited for ...

[WhatsApp](#)



matching a 300w 36v solar panel to my 12v battery and 12/24v inverter

You already have the 12/24 volt inverter, so go with 24 volts and you have more rooms to grow later. if you have to use some 12 volts DC, you can get one of those 24 volt to ...

[WhatsApp](#)



Can I Use a 12V Power Supply on a 9V? Understanding Voltage ...

Answer: It is generally not recommended to use a 12V power supply on a 9V device as it may result in excessive voltage and potentially damage the device. Always use a ...

[WhatsApp](#)



5 Things You Need to Know About 12V Inverters , L& T-SuFin

Buy 12V Inverters online at L& T-SuFin With the right information and research, you can make an informed decision when investing in 12V inverters. L& T-SuFin provides a ...

[WhatsApp](#)



How to Build a 12v Inverter Circuit Diagram for Powering Your ...

Find the circuit diagram for a 12v inverter and learn how it can convert direct current (DC) to alternating current (AC) for various applications. Understand the components and connections ...

[WhatsApp](#)

Can I Use a 12V Plug on a 9V Device? Exploring Voltage ...

While a 12V plug may physically fit into a 9V device, the higher voltage can cause damage or malfunction. It is crucial to ensure that the voltage of the plug matches the device's ...

[WhatsApp](#)



AIMS Power 5000 Watt 12Volt DC Power Inverter to 240Vac 60Hz

This inverter will accept 12v as an input and produce a modified sine wave output. First and foremost, this AIMS inverter offers some great features that are beneficial to any system. First, the front panel has digital gauges that display DC voltage and amp draw.

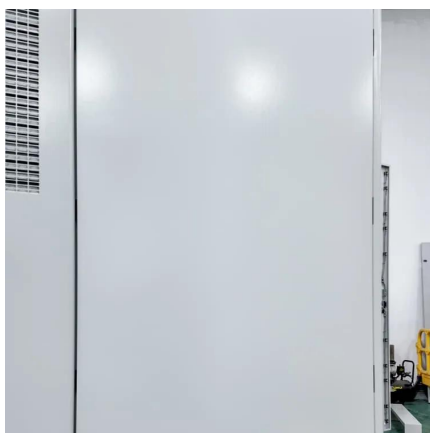
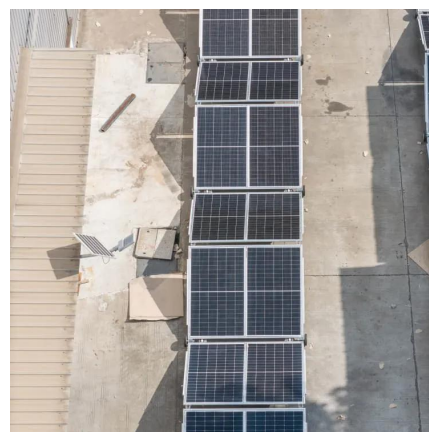
[WhatsApp](#)



How bad, if at all, is 14.4V overvoltage for 12V inverter?

My question is, can the 12V inverter still function as reliably under these higher 14.4V overvoltages? And related to that what should the overvoltage be set to for max inverter ...

[WhatsApp](#)



1,500 Pure Sine Inverter 12-Volt DC to 120-Volt AC ETL Listed to ...

About This Product Power inverters have become a staple in businesses and homes around the world due to intermittent brown and black-outs. AIMS pure sine wave power inverters provide ...

[WhatsApp](#)

Can A 12 Volt Inverter Use A 9 Volt Battery? Power Compatibility

A 12 Volt inverter needs a consistent input of 12 Volts to convert DC (direct current) voltage to AC (alternating current) voltage. A 9 Volt battery provides insufficient ...

[WhatsApp](#)





[Running 12V device with 9V, is it bad ? : r/synthesizers](#)

Just wanted to know if it's bad for the 12v device to run it with a 9v power supply? You run the risk of burning out the power supply. Match voltage, polarity, and connector type - ...

[WhatsApp](#)

[Running 12V device with 9V, is it bad ? : r/synthesizers](#)

Just wanted to know if it's bad for the 12v device to run it with a 9v power supply? You run the risk of burning out the power supply. Match voltage, polarity, and connector type - match or exceed ...

[WhatsApp](#)



Voltage Mishap: What Really Happens When You Plug a 12V into ...

If you plug a 12V device into a 9V power source, the device may not function properly or at all. The voltage difference may damage the device or cause it to malfunction. It's ...

[WhatsApp](#)



Contact Us

For catalog requests, pricing, or partnerships, please visit:
<https://www.straighta.co.za>