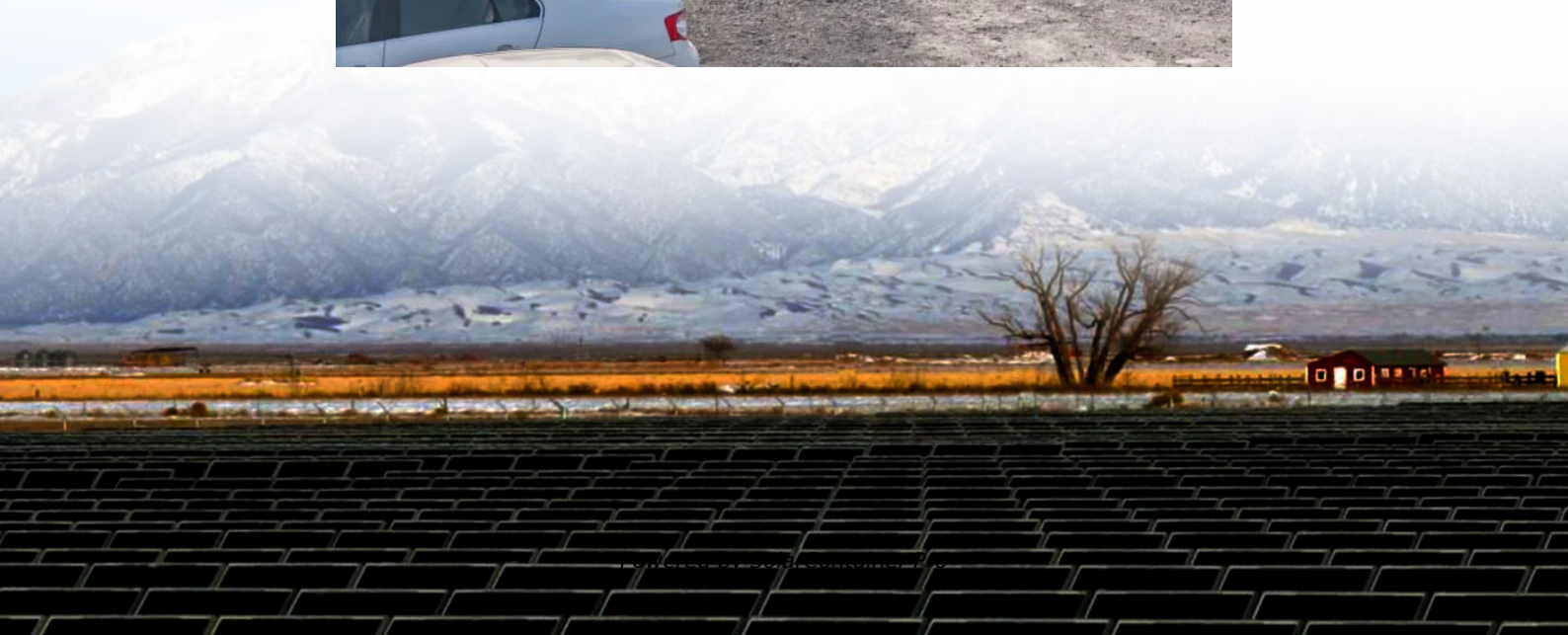


Can I afford to use 12v 5a for the inverter





Overview

Is a 4,000 watt inverter necessary for my needs?

If your device, such as a fridge or A/C with a compressor, requires a surge to start and has a constant draw of only 300 watts, then you may need a 4,000 watt inverter to provide the necessary surge power. However, the 200 amp hour 12 volt battery would not run the 4,000 watt inverter continuously for 30 minutes.

What appliances can a 5000 watts inverter run?

A 5000 watts inverter can power several heavy electronic appliances. You can run Microwave, Coffee maker, refrigerator, toaster, computer, TV, Stereo, and Heater, etc. The watts requirement of each household appliance should be calculated before connecting them to the battery.

Should I use a 12V or 24V inverter?

If you have to use an inverter for all your power needs, then there is no significant reason to stay at 12V and switch to 24V. If you have 8 100Ah batteries, definitely make a 24V 8S pack. 12V and 24V systems have the same 2400 watt hours. It is preferred to have anything over 2000 watts on a 24V or 48V system.

Which 12V power inverter is best?

For reliability and performance, Topbull 12V power inverters are highly recommended. Known for their robust design and superior efficiency, Topbull's inverters provide stable power for a wide range of applications. Here are three excellent options.

How many appliances can a 5000W inverter power?

A 5000W inverter can power more than 5 household appliances without an additional power supply. However, some appliances may require more power, so you may need to disconnect some appliances while using others and then



connect the required equipment to start.

What is a 12V DC power inverter?

This is where a power inverter comes in. Definition and Working Principle A 12V DC power inverter is a device that converts low-voltage direct current (DC) power from a 12V battery (such as a car battery or deep-cycle battery) into 120V alternating current (AC) power, making it suitable for household appliances and electronic devices.



Can I afford to use 12v 5a for the inverter



[How do I choose a Power Inverter: Buyer's Guide](#)

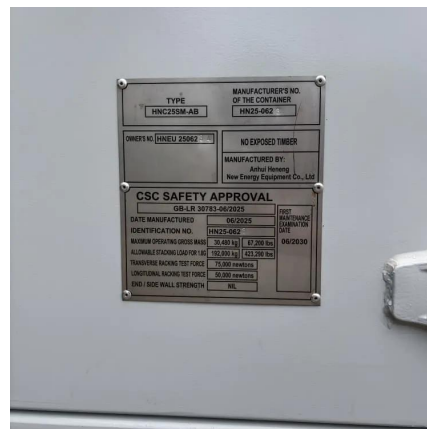
So, you will need an inverter that can supply at least 18 watts to power your device. You're in luck because the smallest one you can readily buy will be able to handle that! Just add up all of ...

[WhatsApp](#)

Can I Use A Car Battery For An Inverter? Connecting For Backup ...

Yes, you can use a car battery with an inverter to power electronic devices like laptops and chargers. Ensure the battery's compatibility and efficiency with the inverter. This ...

[WhatsApp](#)



Can I use a 12V 1.5A power adapter for something that is rated

I have a Linksys WRT54GL router that I can't seem to find the power adapter for. The power adapter that normally comes with it is rated 12V 1A. The closest adapter I could find is 12V ...

[WhatsApp](#)



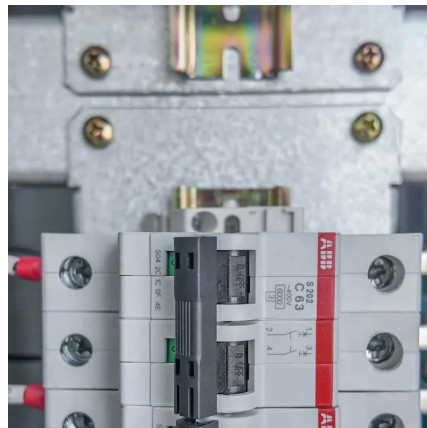
[Considerations when buying and installing an inverter](#)

Inverters are handy when you are offgrid and need to use appliances that run on normal grid power (110v AC in the USA, 230v AC in most of



the world). After all, just because ...

[WhatsApp](#)



What Can a 5000 Watt Inverter Run? , Complete Guide for Home ...

Whether you're living off-grid, preparing for an emergency, or powering an RV, this guide will help you understand what appliances and devices a 5000W inverter can handle -- ...

[WhatsApp](#)



[Can I Attach My Small Inverter Directly to the Battery?](#)

For example, a 12V inverter won't work with a 24V battery bank; the excess voltage can instantly destroy the inverter's circuitry. Conversely, a 24V inverter connected to a 12V ...

[WhatsApp](#)



Do I Need an Inverter for a 12V Battery? Running Appliances ...

Yes, you need an inverter to run standard appliances on a 12V battery. Most household appliances use alternating current (AC), while a 12V battery provides direct current ...

[WhatsApp](#)





12 Volt DC Power Inverter: In-Depth Learning and Buying Guide

When using a 12V DC power inverter, it's essential to understand several key factors to ensure optimal performance and avoid damage to both your inverter and connected ...

[WhatsApp](#)



[Connecting 3000W 12V Pure Sine Wave Inverter to Battery](#)

Adding a few additional thoughts here: I bought the Renogy Inverter listed as a "3000W 12V Pure Sine Wave Inverter" knowing it was oversized for the task. But I assumed I could use a too-big ...

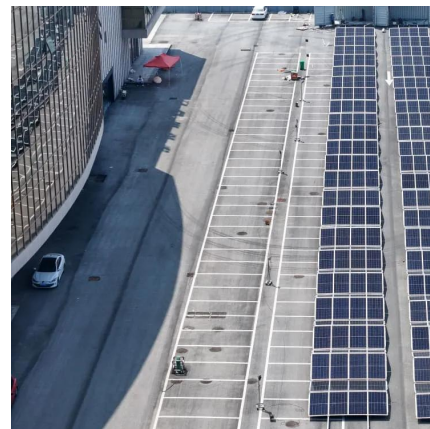
[WhatsApp](#)



Calculate Battery Size For Any Size Inverter (Using Our Calculator)

So I have made it easy for you, use the calculator below to calculate the battery size for 200 watt, 300 watt, 500 watt, 1000 watt, 2000 watt, 3000 watt, 5000-watt inverter

[WhatsApp](#)



Contact Us

For catalog requests, pricing, or partnerships, please visit:
<https://www.straightta.co.za>