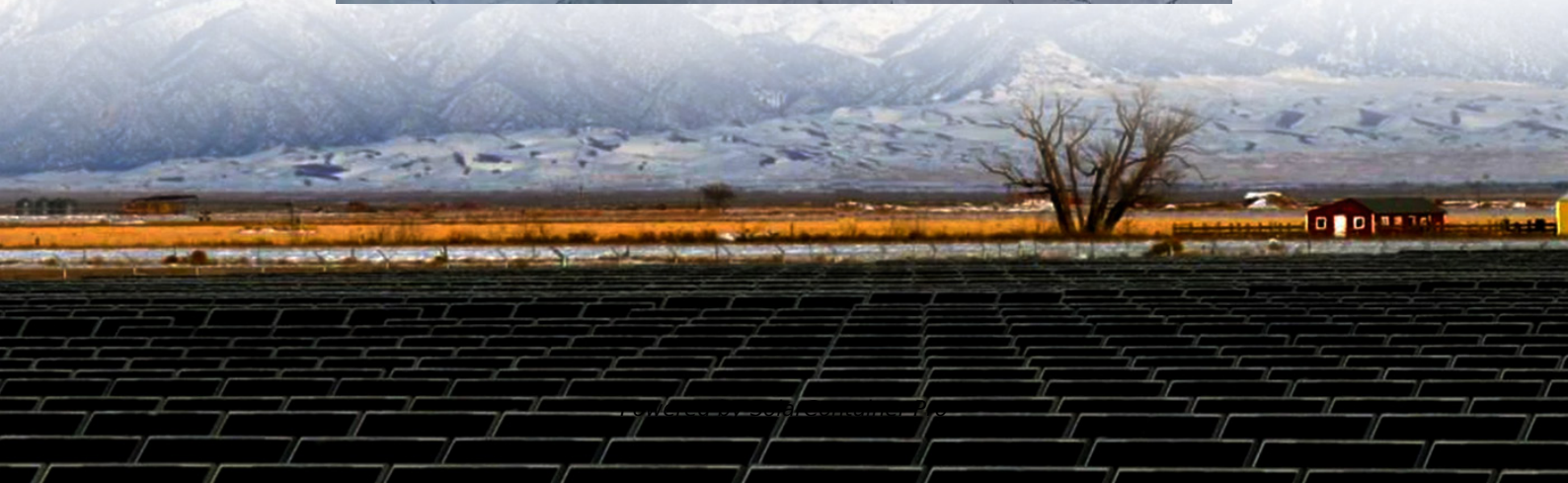


Can 12v solar energy be connected to an inverter at the same time





Overview

Should I connect my solar panel to an inverter?

Connecting your solar panel to an inverter is key to using solar energy every day. An inverter changes the DC electricity from solar panels into AC electricity. This is the type most home appliances use. By doing this, you can run your appliances more effectively. You'll also cut your electricity costs.

Why do solar panels and batteries need to be connected in parallel?

This parallel wiring method is essential for 12V systems, including 12V charge controllers and inverters. Therefore, two or more solar panels and batteries (each rated at 12V DC) are connected in parallel to maintain system voltage while increasing current capacity.

Should I connect my inverter in parallel?

The big benefit of connecting in parallel is that the voltage to your inverter remains the same while the overall energy capacity. So if you use 2, 5, or 10, 12V batteries the voltage would remain at 12V. This is important as your inverter will be designed for a specific input voltage – usually 12V or 24V.

How do you connect a solar panel to a battery & inverter?

Once the solar panels are securely mounted, it's time to connect them to the battery and inverter. There are two main wiring configurations: series and parallel connections. Let's explore each in detail: Connect Positive and Negative Terminals: Connect the positive terminal of one solar panel to the negative terminal of the next panel.

Will a solar inverter work if a battery is high voltage?

The inverter will work but high voltage is not healthy for it. That's why we usually connect solar panels to the charge controller which is wired to the battery and the battery is then connected to an inverter. Don't feel like installing yourself?



.

How do solar inverters work?

Inverters transform the direct current (DC) electricity produced by solar panels into alternating current (AC) electricity, enabling seamless integration with the home's electrical system. Inverters help manage the overall performance of the solar energy system by tracking and optimizing solar output.



Can 12v solar energy be connected to an inverter at the same time



[Connecting Multiple Batteries to an Inverter: Easy Guide](#)

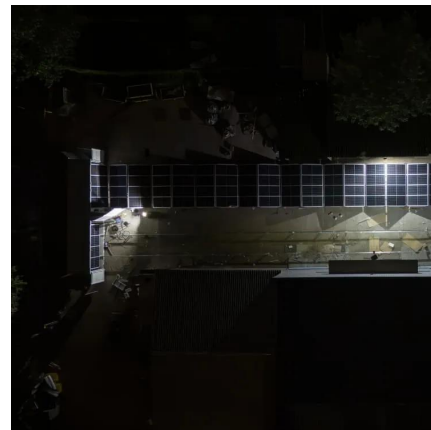
The big benefit of connecting in parallel is that the voltage to your inverter remains the same while the overall energy capacity. So if you use 2, 5, or 10, 12V batteries the voltage would remain at ...

[WhatsApp](#)

[Connect BOTH 12v appliance and 110v inverter to battery](#)

Can I connect a 12v portable fridge AND an inverter to my battery bank? I would like to lower energy required to run a 12v fridge (versus 110v minifridges) and have an inverter ...

[WhatsApp](#)



How to connect solar panels to battery bank, charge controller ...

How to connect solar panels to battery bank, charge controller, and inverter wiring diagrams: Setting up a solar power system requires proper wiring to ensure efficiency and safety.

[WhatsApp](#)

[How to Connect a Solar Panel to a 12V Battery? \[Diagrams\]](#)

Here is a diagram connecting a single 100W solar panel to a 12V 100Ah lithium battery and a 500W inverter: Connecting a solar panel to a



battery and inverter Step 1: ...

[WhatsApp](#)



Can I Use a 24V Inverter with a 12V Battery? Compatibility and

Using a 24V inverter with a 12V battery is not recommended. This voltage mismatch can create power limitations and pose safety hazards. For an effective solar energy system, ...

[WhatsApp](#)



[How to Wire Solar Panel & Batteries in Parallel](#)

This parallel wiring method is essential for 12V systems, including 12V charge controllers and inverters. Therefore, two or more solar panels and batteries (each rated at 12V DC) are ...

[WhatsApp](#)



How to Connect Solar Panels to Inverter and Battery: A Step-by ...

Unlock the power of solar energy for your home with our comprehensive guide on connecting solar panels to an inverter and battery. Explore essential components, system ...

[WhatsApp](#)





[Can I connect an inverter directly to a solar panel](#)

In this post, we'll explore the compatibility of inverters with solar panels, discuss the types of inverters available, and guide you on how to safely set up your solar energy ...

[WhatsApp](#)



Contact Us

For catalog requests, pricing, or partnerships, please visit:
<https://www.straighta.co.za>