

Bms lithium battery warning





Overview

Why do lithium batteries need a BMS?

Overcharging or discharging a lithium-ion battery can shorten its life and even cause safety hazards. A BMS prevents this by automatically disconnecting the battery from the charger or load when it reaches unsafe levels, safeguarding the battery and preventing potential damage.

What happens if a lithium ion battery does not have a BMS?

Without a BMS, lithium-ion batteries can overcharge or over-discharge. This condition can lead to battery damage or even fires. A BMS optimizes the charging process, ensuring longer battery life. It prevents abuse by balancing the charge across individual cells.

What does BMS mean in a battery?

At its core, BMS stands for Battery Management System. It's an essential component for lithium-ion batteries, which are commonly used in electric vehicles (EVs), energy storage systems (ESS), and other devices that require rechargeable batteries.

Can a battery management system prevent over-discharging in lithium-ion batteries?

Yes, a Battery Management System (BMS) can prevent over-discharging in lithium-ion batteries. A BMS monitors the battery's voltage and current levels to ensure they remain within safe limits. It disconnects the battery when the voltage drops to a predetermined threshold, effectively preventing further discharge.

How do I know if my BMS is bad?

Warning Lights or Alarms: Many systems include alerts for BMS issues. 1. Safety First: Always prioritize safety. Disconnect the battery from any loads or charging devices. 2. Inspect the BMS: Check for visible damage such as burnt



components or loose connections. If you're comfortable, use a multimeter to test connections. 3.

What happens if the internal BMS detects the correct input voltage?

When the internal BMS detects the correct input voltage, it will verify that the condition that caused the event is no longer present and re-enable battery operation. If you need additional help, check with the manufacturer of your battery for brand specific troubleshooting or contact GMI Energy and we will be happy to help.



Bms lithium battery warning



[Can a BMS Prevent Overcharging in Lithium Batteries?](#)

Short A Battery Management System (BMS) actively monitors and regulates lithium battery charging to prevent overcharging. While no system is 100% foolproof, modern BMS designs ...

[WhatsApp](#)

[Safety Instructions: LITHIUM BMS WARNING](#)

LITHIUM WARNING: Take caution when working with lithium systems. Genasun li controllers use the CC/CV charging profile indicated on the controller. CHECK the specifications of the battery ...

[WhatsApp](#)



[Does BMS Prevent Overcharging? A Comprehensive Guide](#)

In the realm of modern energy storage solutions, the Battery Management System (BMS) plays a crucial role in ensuring the safety, efficiency, and longevity of lithium-ion ...

[WhatsApp](#)



[What Does BMS \(Battery Management System\) Mean?](#)

Why is BMS a common term in lithium battery specs? You'll see "BMS included" splashed across spec sheets like some badge of honor. And for



good reason--if a lithium battery is the heart of ...

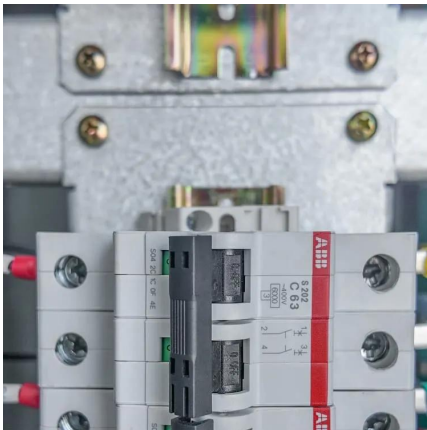
[WhatsApp](#)



Lithium-ion battery: Use a suitable BMS board for optimal safety

Thanks to this communication, the BMS also acts as an alarm in the event of a battery malfunction. The warning is given under two thresholds: Alert: The BMS informs that ...

[WhatsApp](#)



[How to Reset BMS in a Lithium Battery](#)

In order to reset a BMS that has placed the battery into a protection mode, a LiFePO4 charger with the correct charging voltage will be needed. When the internal BMS detects the correct ...

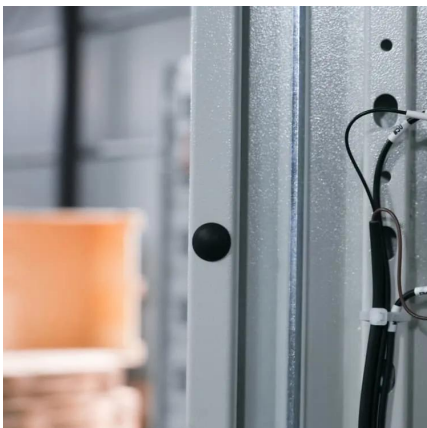
[WhatsApp](#)



What to Do If Your LiFePO4 Battery Management System (BMS) ...

Warning Lights or Alarms: Many systems include alerts for BMS issues. 1. Safety First: Always prioritize safety. Disconnect the battery from any loads or charging devices. 2. Inspect the ...

[WhatsApp](#)





[Service Campaign 9B4: Software Update for DTC P1BB20: ...](#)

a warning light due to DTC Code P1BB20 (12V Lithium Battery Cell Voltage High). Follow the procedure in TSB 25-01-010H (or latest version) to perform the update the Battery ...

[WhatsApp](#)



Understanding Battery Management Systems (BMS) in Lithium ...

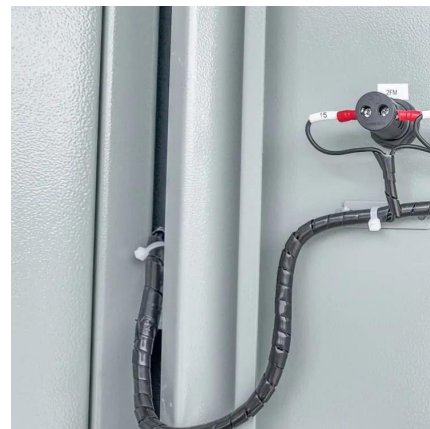
Learn how a Battery Management System (BMS) protects lithium batteries by controlling charging and discharging. Understand BMS logic, key safety features, and real-world examples with ...

[WhatsApp](#)

Do I Need a BMS for Lithium-Ion Batteries? Benefits and ...

A Battery Management System (BMS) is crucial for lithium-ion batteries. It ensures safe operation by preventing overcharging and excessive discharging. The BMS provides ...

[WhatsApp](#)



Lithium Battery Repair by UpFix: Fixing BMS & Charging Issues

Each issue is tied to specific internal faults, such as degraded cells or malfunctioning BMS components. Our team is trained to diagnose and resolve these problems ...

[WhatsApp](#)



Amazon : 48V 26Ah Shark Ebike Battery Pack with Smart BMS ...

1 day ago · ?BMS System?High quality electric core (21700 cells) and equipped with a BMS protective plate, prevent over charge, over discharge, over current and short circuit, thanks to ...

[WhatsApp](#)



Contact Us

For catalog requests, pricing, or partnerships, please visit:
<https://www.straighta.co.za>