

# **Benin lithium battery BMS standard**





## Overview

---

What is a BMS for lithium-ion batteries?

A BMS for lithium-ion batteries acts as the "brain" of the battery pack, continuously monitoring, protecting, and optimizing performance to ensure safe operation and maximum lifespan. Understanding how BMS technology works is essential for anyone involved with lithium-ion applications.

What is a battery management system (BMS)?

Battery Management Systems (BMS) are at the heart of electric vehicle (EV) safety, ensuring the efficient and reliable operation of lithium-ion batteries. As batteries become more powerful and complex, maintaining their safety, performance, and longevity is critical.

Are lithium-ion batteries safe to operate without BMS protection?

A: Operating lithium-ion batteries without proper BMS protection is extremely dangerous and not recommended. While basic protection circuits exist, they lack the comprehensive monitoring and management capabilities needed for safe operation.

What are functional safety standards for battery management systems (BMS)?

Functional safety standards ensure that safety-related functionality in Battery Management Systems (BMS) is maintained throughout its lifecycle, mitigating risks that could compromise the system's reliability and safety. ISO 26262 is a key standard for automotive functional safety, focusing on electrical and electronic systems, including BMS.

Does BMS work in a safety battery support system?

operational. BMS active charge control function is inhibited during this process, and BMS the main contactors. In addition, cell overheating with an inhibited battery pack cooling control function should be secured. The objective is to validate the BMS functionality of start-up of safety battery



support systems (e.g., fire extinguisher).

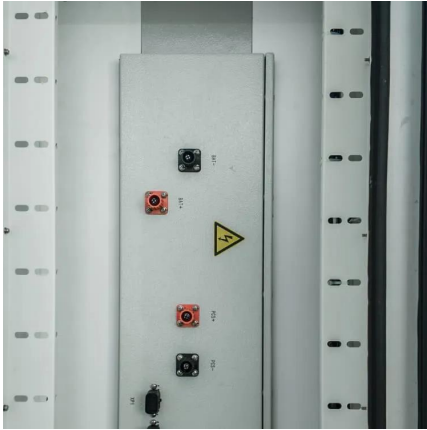
What challenges does lithium battery BMS face?

Despite advancements, lithium battery BMS still faces challenges such as:  
High-Precision Sensors and Algorithms: Enhancing SOC, SOH, and RUL estimation accuracy. Real-Time Performance and Reliability: Ensuring rapid response to battery state changes. Cost and Compatibility: Addressing customization needs across different battery types.



## Benin lithium battery BMS standard

---



### LiFePO4 Battery vs. Lithium-ion Polymer (LiPo): Which One ...

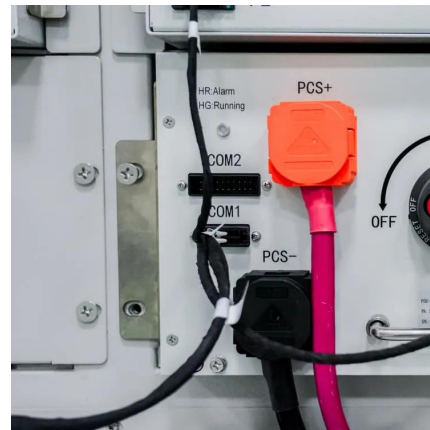
LiFePO4 Battery vs. Lithium-ion Polymer (LiPo): Which One Should You Choose? Expert comparison of chemistry, safety, energy density, cycle life, temperature performance, and true ...

[WhatsApp](#)

### [How Battery Management Systems \(BMS\) Prevent Battery ...](#)

To maximize performance and safety, a Battery Management System (BMS) is a critical battery system component. The BMS monitors and manages various aspects of battery ...

[WhatsApp](#)



### Functional safety requirements for BMS in electric cars (ISO 26262)

He touches topics about the main purpose of a BMS from a safety viewpoint, BMS SOA, the ISO 26262 certification and how to comply with its requirements, and the concept and product ...

[WhatsApp](#)



### Functional and Safety Guide for Battery Management System (BMS)

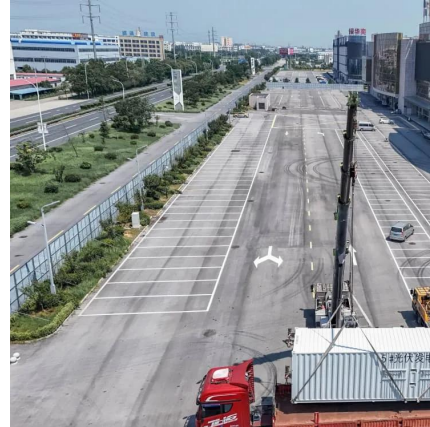
Battery Support Systems (e.g. fire extinguisher).  
Loss of BSS / BMS safety function The purpose of this test is to ensure that any BMS safety





function failure (e.g frozen sensor value) is ...

[WhatsApp](#)



### **How does lithium battery BMS determine the battery's safety, life ...**

Using collected data and advanced algorithm models (such as Kalman filtering and neural networks), lithium battery BMS accurately estimates the SOC and SOH of the battery ...

[WhatsApp](#)

### **Comprehensive review of battery management systems for ...**

Research into lithium-ion battery technologies for Electric Vehicles (EVs) is advancing rapidly to support decarbonization and mitigate climate change. A critical aspect in ensuring the ...

[WhatsApp](#)



### **[D6.7 - Battery Management System Standard](#)**

The existing standard applicable for testing overvoltage and undervoltage protection functionality of a BMS, is ISO 12405-2 - Electrically propelled road vehicles -Test specification for lithium ...

[WhatsApp](#)



## Contact Us

---

For catalog requests, pricing, or partnerships, please visit:  
<https://www.straighta.co.za>