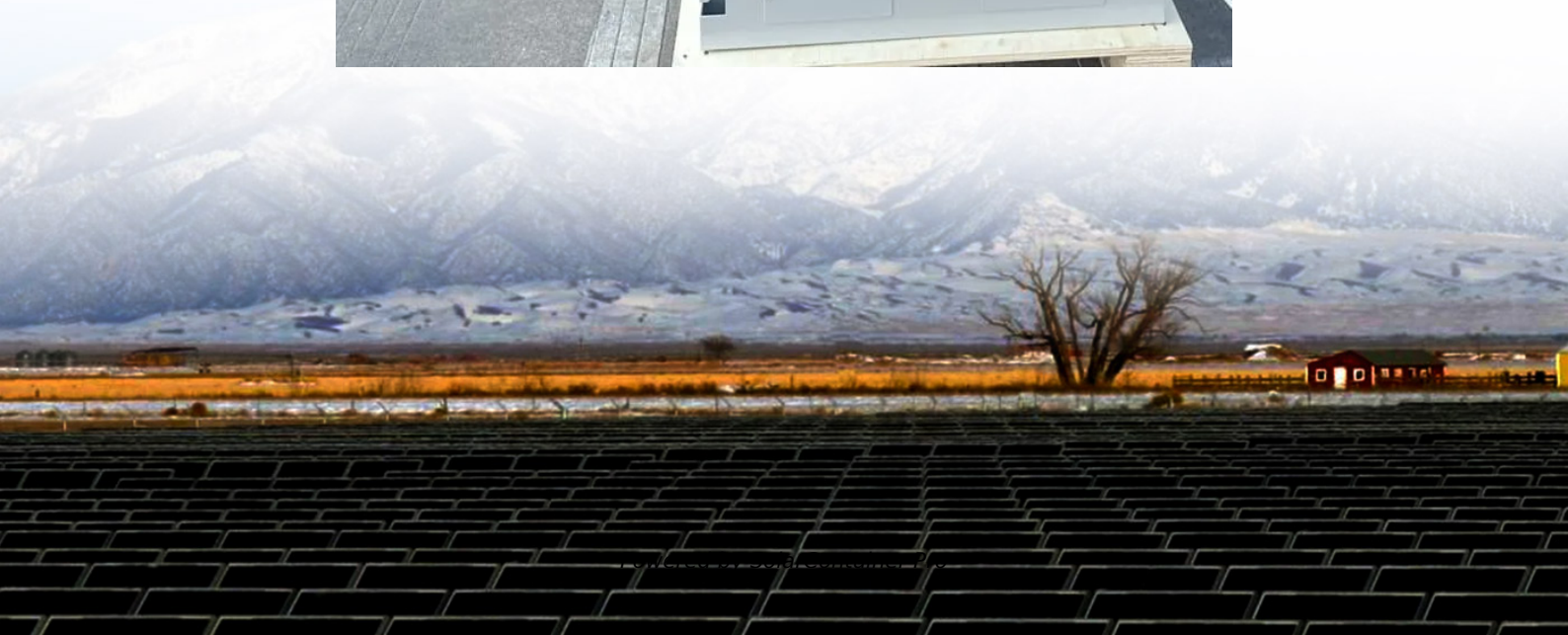


Battery voltage of outdoor power supply





Overview

What is a battery-powered power supply?

A battery-powered power supply converts stored chemical energy into electrical energy to power devices. It includes a battery, voltage regulator, and output ports. Unlike grid-dependent systems, it offers portability and reliability during outages. Common types include lithium-ion, lead-acid, and solar-charged systems.

What are the voltages available on the power supply?

10Amp or 20Amp Options Available. 10Amp, 20Amp or 30Amp Options Available. 10Amp or 20Amp Options Available. 36Volt or 48Volt options available.

How does a battery power supply work?

Battery-powered supplies store energy via electrochemical reactions. When connected to a device, the battery discharges, converting chemical energy to electrical energy. Voltage regulators stabilize output, ensuring compatibility with devices. Advanced models integrate inverters for AC output and charge controllers for solar compatibility.



Battery voltage of outdoor power supply



What is the voltage of outdoor energy storage power supply?

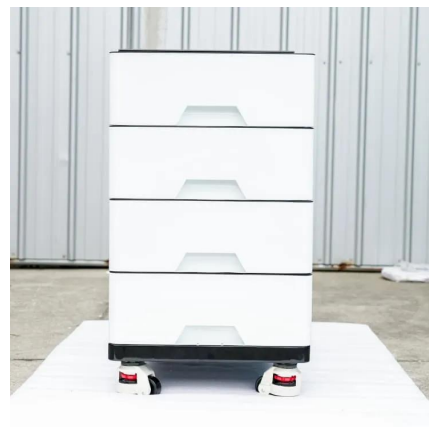
Understanding the voltage specifications of outdoor energy storage units is essential for maximizing their performance and ensuring safe operation. The following sections ...

[WhatsApp](#)

What is the input voltage of an outdoor mobile power supply?

The input voltage of an outdoor mobile power supply refers to the voltage level required to charge the battery within the power supply. It is a fundamental parameter that dictates the charging ...

[WhatsApp](#)



[External Power Supply for Solar Garden Light](#)

Then I will wire the external battery supply in parallel with the original single battery holder so the power will be supplied to the LED lights through the circuit board. My concern is ...

[WhatsApp](#)

How to Choose the Best Charging Method for an Outdoor Power Supply

Below, we will introduce several common outdoor power supply methods and their typical application scenarios to help you make an



informed decision for your next camping trip, ...

[WhatsApp](#)



What Is a Battery Powered Power Supply and How Does It Work?

What Is a Battery Powered Power Supply and How Does It Work? A battery-powered power supply, often called a portable power station, is a rechargeable device that ...

[WhatsApp](#)



How to Choose the Best Charging Method for an Outdoor Power ...

Below, we will introduce several common outdoor power supply methods and their typical application scenarios to help you make an informed decision for your next camping trip, ...

[WhatsApp](#)



The Ultimate Guide to Lawn and Garden Battery Voltage: What ...

Understanding the voltage of a lawn and garden battery is crucial for ensuring that your devices run efficiently and operate effectively. In this comprehensive guide, we will explore the various ...

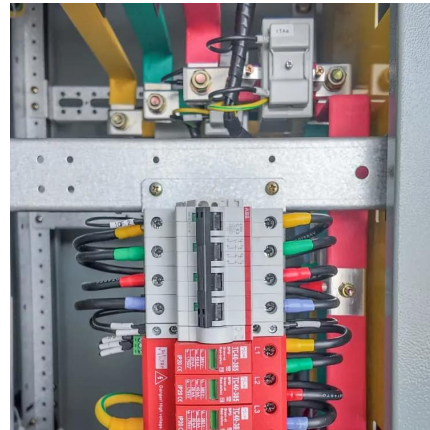
[WhatsApp](#)



What is the output voltage of an outdoor portable battery?

Most common outdoor portable batteries have an output voltage of either 12V or 24V. The 12V batteries are the more popular choice for smaller devices like smartphones, tablets, LED ...

[WhatsApp](#)



Flashfish 200W Portable Power Station 151Wh, 400W Peak Solar ...

[Advanced safety & Reliable Warranty] Built-in Battery Management System (BMS) ensures voltage control, temperature control, and short.circuit protection. Automatically shuts ...

[WhatsApp](#)

OUPES Power Station Mega 1 & B2 Extra Battery, 3072Wh Power Supply ...

Buy OUPES Power Station Mega 1 & B2 Extra Battery, 3072Wh Power Supply w/ 4 2000W AC Outlets (4500W Peak), LiFePO4 Battery Power for Outdoor Camping, Home ...

[WhatsApp](#)



Contact Us

For catalog requests, pricing, or partnerships, please visit:
<https://www.straightta.co.za>