

Battery parameters collected by Huawei BMS





Overview

The system collects parameters such as the total voltage of the battery system, voltage of cells, battery level, charge/discharge current, and temperature, monitors the process and status of battery charging and discharging, and provides effective protection and alarm functions. What parameters are displayed when a battery model is set?

These parameters are displayed when Battery Model is set to a lead-acid battery model. The float charge voltage should be lower than the equalized charge voltage. The equalized charge voltage should be greater than the float charge voltage. Set this parameter based on the actual condition.

How many batteries are connected to a BMU?

The BMU is connected to each of the 24 batteries, as shown in Figure 3-1. Scenario 2: Some ports are occupied. The BMU is connected with some of the 24 batteries. To facilitate monitoring in this case, the BAT1+ cable is connected to the connected in turn. In this example, a BMU is connected to 20 batteries, as shown in Figure 3-2.

How to check battery status?

You can view related data by choosing System Info > Runn Info > Battery Status. Step 1 On the login page, enter a user name and password. Choose Monitoring > Comm. Config. Figure 4-2. You can view related data by choosing Monitoring > Real-time Data > Battery.

How to set battery cable length based on site requirements?

Set this parameter based on the site requirements. When each battery string is connected to the RTN+ busbar using one cable, set Battery Cable Length to half of the total length of cables between both ends of a battery string and the positive and negative busbars, and set BatCableCrss-SecArea to the cross-sectional area of the cable.

Can a BMU be powered by a battery?



DC power supply can be from an external DC power source. Do not power the BMU with batteries to prevent batteries from being completely discharged. For AC power, it is recommended that the BMU be powered by the UPS. devices in a power supply system. Improper use of battery strings (for example, overcharge,



Battery parameters collected by Huawei BMS



[Battery Management System \(BMS\) Detailed Explanation: ...](#)

Battery Management System (BMS) is the "intelligent manager" of modern battery packs, widely used in fields such as electric vehicles, energy storage stations, and consumer ...

[WhatsApp](#)

[SmartLi Monitoring Module User Manual](#)

This document describes the monitor display unit (MDU), liquid crystal display (LCD) user interface, and web user interface (WebUI) of SmartLi, helping you correctly set parameters for ...

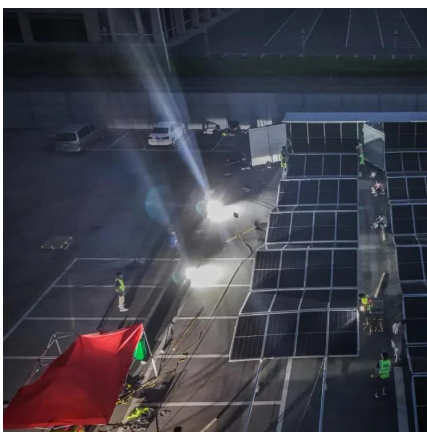
[WhatsApp](#)



Q1. What is a BMS? Types of BMS and differentiate the ...

BMS monitors the State of Health (SOH) of the battery, collects data, controls environmental factors that affect the cell, and balances them to ensure the same voltage across cells.

[WhatsApp](#)



[Battery Management System , Huawei Digital Power](#)

Huawei BMS consists of BCU (Battery Control Unit) and BMU (battery monitor unit). BCU is responsible for charge & discharge management,



SOX estimation, fault protection, and ...

[WhatsApp](#)



[Understanding Battery Management Systems \(BMS\): Functions](#)

A Battery Management System (BMS) plays a crucial role in modern energy storage and electrification applications. It oversees a battery pack's operational health, ...

[WhatsApp](#)

Technical Standard of Lithium-ion Battery Equipment for ...

The system collects parameters such as the total voltage of the battery system, voltage of cells, battery level, charge/discharge current, and temperature, monitors the process and status of ...

[WhatsApp](#)



Contact Us

For catalog requests, pricing, or partnerships, please visit:
<https://www.straighta.co.za>