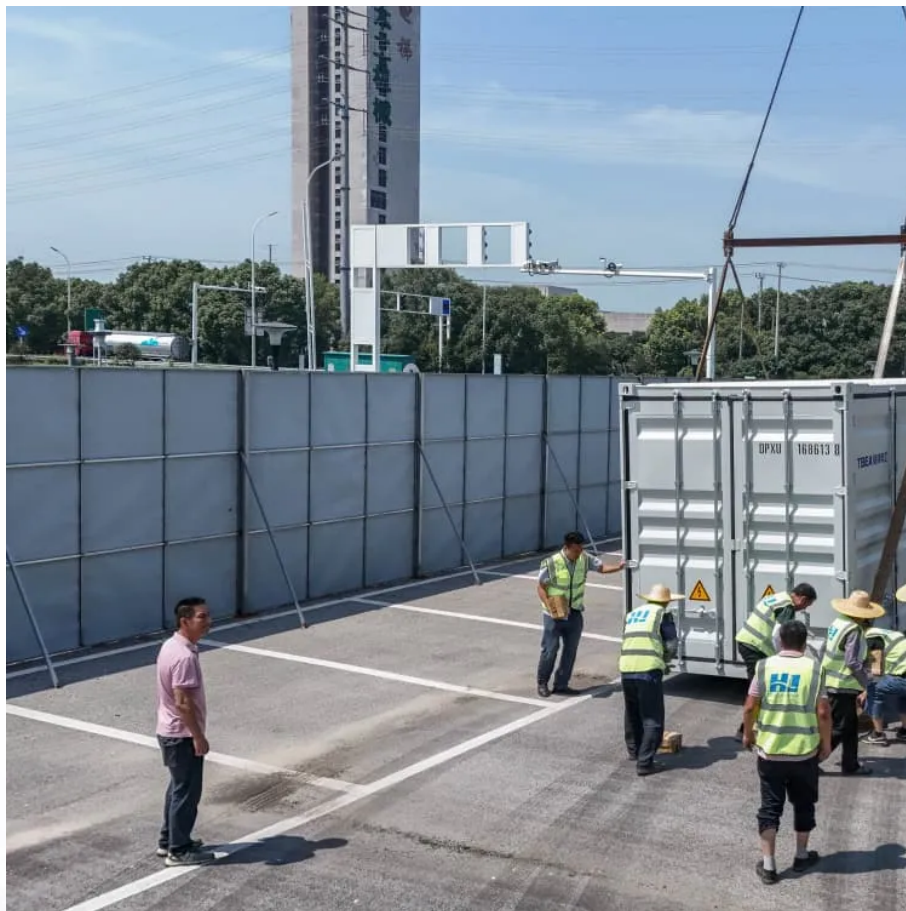


Battery level is low when inverter is using power





Overview

To determine if your inverter battery is bad, turn on the inverter and connect a light bulb or fan. Check the battery voltage. If the voltage drops significantly or the inverter shuts down, the battery is likely weak and may need replacement. What are the problems with Inverter Batteries?

Inverter batteries can face several problems. Identifying these issues early helps in battery management. Here are some common problems:

Overcharging: This can damage the battery. It reduces its life. Undercharging: The battery doesn't get enough charge. It affects performance.

How to check if inverter battery is still working?

The inverter battery will eventually die and need to be replaced. In this blog post, we will show you how to check if your inverter battery is still working or not. First, you need to check the voltage of the inverter battery using a voltmeter. If the reading is below 12 volts, then the battery is already dead and needs to be replaced.

Does a hybrid inverter/charger have low voltage protection?

Both our standard inverter and hybrid inverter/chargers have low voltage protections. In a hybrid inverter, you may get warning about "battery low voltage" or "battery over-discharge", and in a standard system your charge controller and inverter may show a fault or shut off due to low battery voltage.

What happens if your inverter is not turned off?

However, improper handling can lead to battery drainage, causing inconvenience and additional costs. Ensuring the inverter is switched off when not needed can prevent unnecessary battery usage. Regularly checking and maintaining the battery's health can extend its lifespan and efficiency.

Why is my inverter battery not charging?



1. Inverter low battery problem This is when your inverter's battery doesn't have enough charge to power your devices. Causes: Solutions: Check if your battery is more than 3-5 years old. If so, it might be time to replace it. Read More:- [Manufacturer of Tubular Battery In India](#). 2. Inverter overload problem.

Why are Inverter Batteries important?

Inverter batteries are crucial for power backup. They need proper care. Battery management ensures they last longer and perform well. You can avoid frequent replacements. Let's explore more about keeping your inverter battery healthy. Healthy batteries provide consistent power supply. They reduce chances of sudden power loss.



Battery level is low when inverter is using power



Inverter Battery: How to Tell If It's Bad and Signs of a Faulty Unit

Most inverter batteries have a lifespan of 3 to 5 years. If your battery exceeds this age, it's wise to evaluate its health. Recognizing these signs early can save you from power ...

[WhatsApp](#)

Inverter Power Draw: How Much Power Does An Inverter Use From A Battery

An inverter draws power from a battery depending on its efficiency, typically over 92%. For a connected load of 250 watts, the inverter uses less than 270 watts from the ...

[WhatsApp](#)



How to Tell If an Inverter Battery Is Dead or Close to Dying

Here's how to tell if your inverter battery is dead or close to dying: Sign of a Dying Battery: One of the most noticeable signs is a significant reduction in the amount of time your inverter can run ...

[WhatsApp](#)

Pure Sine Wave Inverter Selection: Reliable Power When You ...

Frustrated by power outages? Learn how to choose, install, and use pure sine wave inverters to protect your electronics and keep everything



running during blackouts and off-grid adventures.

[WhatsApp](#)



[Exploring Battery Inverters: A Complete Overview](#)

Part 1. What is a battery inverter? A battery inverter is a crucial component of a solar power system or any standalone energy storage system. It is responsible for converting ...

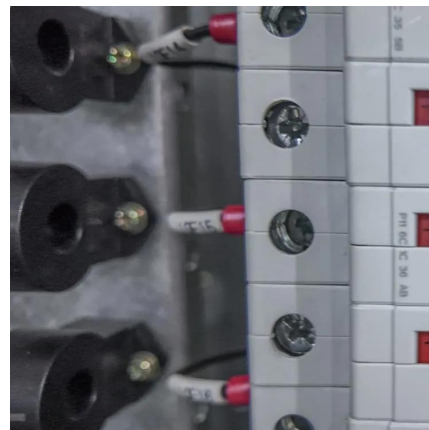
[WhatsApp](#)



Why is my inverter shutting off due to "battery low voltage"?

In a hybrid inverter, you may get warning about "battery low voltage" or "battery over-discharge", and in a standard system your charge controller and inverter may show a ...

[WhatsApp](#)



[How to Check Inverter Battery is Ok Or Not!](#)

In this blog post, we will show you how to check if your inverter battery is still working or not. First, you need to check the voltage of the inverter battery using a voltmeter. If ...

[WhatsApp](#)

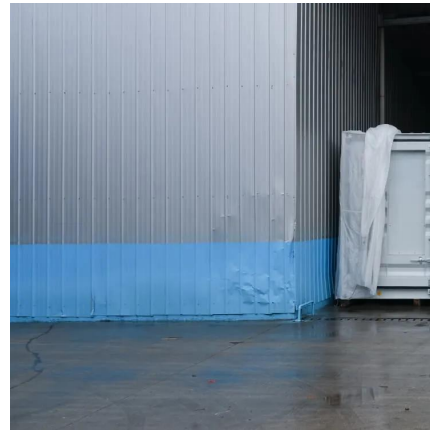




[Low battery automatic transfer inverter \(PROBLEM SOLVED\)](#)

But what I really want is an inverter that plugs into the AC outlet and the battery and when the batteries drop below a predetermined voltage threshold, the inverter will ...

[WhatsApp](#)



[Low battery automatic transfer inverter \(PROBLEM SOLVED\)](#)

I have found transfer switch inverters but those are designed by default to switch over to AC when it senses the presence of AC and that is great for emergency back up when ...

[WhatsApp](#)

Common Home Inverter and Battery Issues: Causes and Solutions

However, inverters and battery can develop issues over time, like any other electrical device. Some problems are minor and easily fixed, while others may require ...

[WhatsApp](#)



[How To Calculate Battery Backup Time For Your Business](#)

The inverter battery plays a crucial role in providing uninterrupted power to your home. To function efficiently, the battery uses an electrolyte solution made of distilled water and acid. The water ...

[WhatsApp](#)



[Inverter Low Voltage Cutoff--Why SO low?](#)

Why do these inverters allow the battery to discharge to 10V (or lower)? Is it due to some difference between "resting" voltage and in-use voltages? Is there a general consensus ...

[WhatsApp](#)



Contact Us

For catalog requests, pricing, or partnerships, please visit:
<https://www.straighta.co.za>