

# **Battery is good for outdoor power supply**





## Overview

---

What battery types are most commonly used in portable power stations?

There are various battery technologies, but the main ones used in portable power stations today are types of lithium-ion (Li-ion) batteries, often lithium nickel manganese cobalt oxide (Li-NMC) or lithium iron phosphate (LiFePO<sub>4</sub> or LFP).

Should you buy a portable power station?

The term “portable” is stretching it sometimes. Batteries are heavy. The larger-capacity power stations are typically on wheels and have telescopic handles, and they are still tough to cart around. If you’re looking for something you can actually carry on foot for a distance, you may need to temper your expectations on capacity.

Do wired batteries keep lights on?

Whether you’re going off-grid or safeguarding against blackouts, these beefy, WIRED-tested batteries can keep the lights on. All products featured on WIRED are independently selected by our editors.

What is the best portable power station?

By far the most portable power station in our guide, the EcoFlow River 2 Pro weighs just 17 pounds and has a large handle along the back. The LiFePO<sub>4</sub> battery inside is good for 768 watt-hours, and I managed to squeeze a little more out of it in my tests. The ports are great for camping trips, with everything you need to charge small gadgets.

Is zendure a good power supply?

Zendure also offers semi-solid-state batteries in its top-of-the-line SuperBase listed above, which it promises are more stable and resilient, therefore safer, and have a higher energy density. Some power stations can act as an uninterruptible power supply (UPS); others are classed as an emergency



power supply (EPS).

What can a portable power station charge?

All portable power stations can charge up small gadgets like phones and laptops or be used to power lighting. Most can handle small appliances like mini-fridges or TVs. If you want to use power tools, an AC unit, or in the UK, a kettle, you need to be able to draw thousands of watts.



## Battery is good for outdoor power supply

---



[How much electricity can an outdoor power supply store](#)

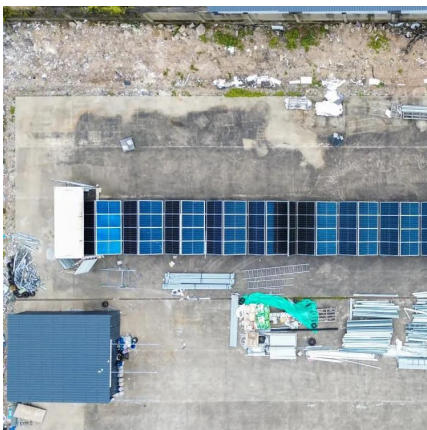
The choice of battery technology plays a crucial role in determining the overall capacity of an outdoor power supply. Lithium-ion batteries are the most prevalent choice ...

[WhatsApp](#)

### Guide to Choosing the Right Batteries for Outdoor Activities

Batteries are indispensable power sources for numerous outdoor devices, from headlamps and lanterns to GPS devices and cameras. Selecting the right battery involves ...

[WhatsApp](#)



### Best Portable Power Supply for Camping and Outdoor Use [2025]

When choosing one, I look at battery capacity, charging speed, weight, and the types of outlets or charging ports. How often I plan to use it and what I need to charge matter ...

[WhatsApp](#)

### [Top 5 Reasons to Power Outdoor Equipment with Lithium](#)

Below we cover the top five reasons why lithium batteries - specifically lithium iron phosphate batteries - are the optimal choice to power





outdoor equipment across a wide range ...

[WhatsApp](#)



### **Guide to Choosing the Right Batteries for Outdoor Activities**

Selecting the right battery involves balancing factors like duration, performance, cost, and environmental impact. This guide provides an in-depth look at different battery types, ...

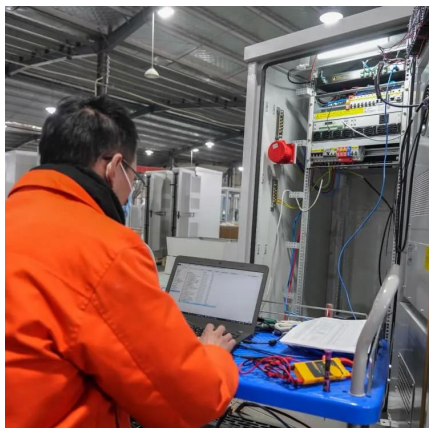
[WhatsApp](#)



### **Power Supply For Outdoor Events**

Ensure your outdoor events run smoothly with our reliable power supply solutions. Designed for versatility and efficiency, these power supplies provide the energy you need for lighting, sound ...

[WhatsApp](#)



### **[Outdoor Batteries at Tractor Supply Co.](#)**

Choosing the right outdoor batteries comes down to knowing what you need them to do. Out in the country, you might have a mix of tasks--some days you're swapping out batteries in your ...

[WhatsApp](#)



### [Which Battery Is Best for Outdoor Power Stations?](#)

In addition to size, the chemical composition (i.e., battery type) plays a crucial role in selecting a battery for outdoor power stations. Common battery types include IMR (Lithium Manganese ...

[WhatsApp](#)



## Contact Us

---

For catalog requests, pricing, or partnerships, please visit:  
<https://www.straighta.co.za>