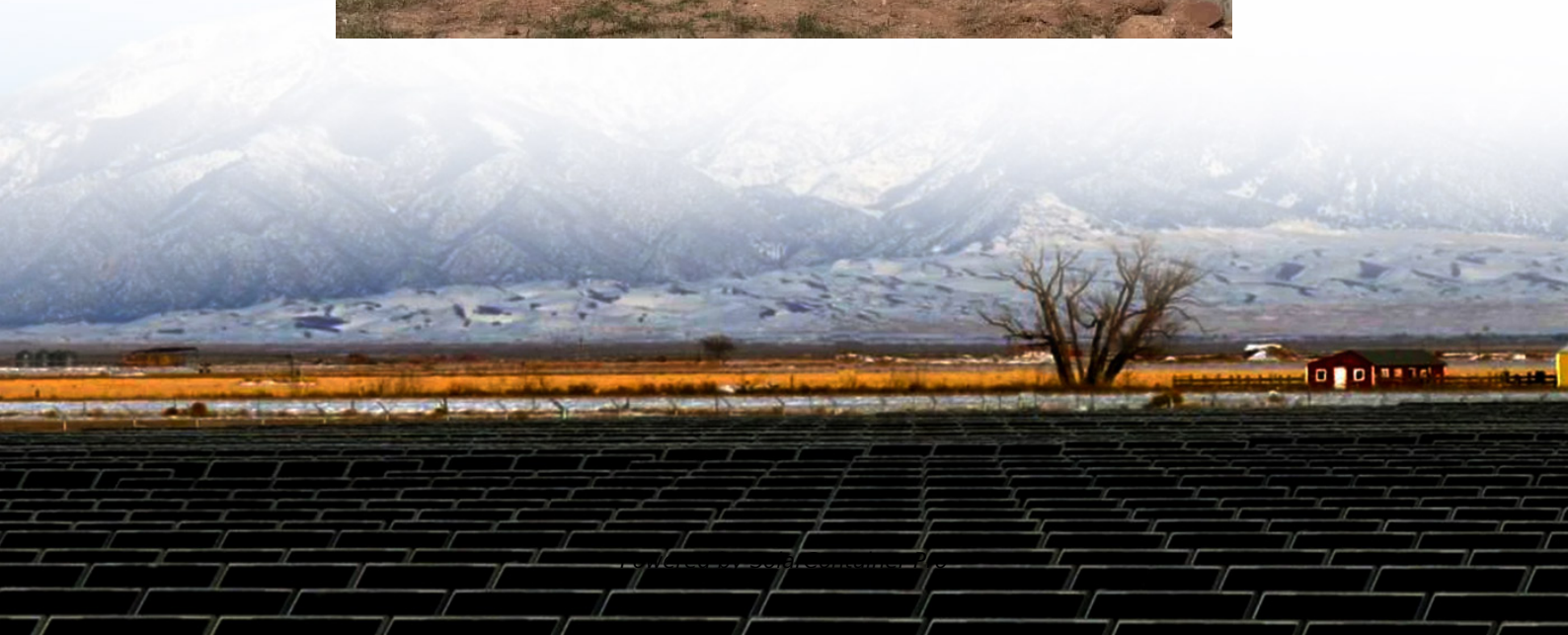


# Battery inverter voltage





## Overview

---

An inverter battery typically operates at 12V, 24V, or 48V. These voltages represent the nominal direct current (DC) needed for the inverter's function. Selecting the correct voltage is crucial, as it affects your energy needs and system performance.



## Battery inverter voltage

---



### How Inverters Work with Batteries: A Beginner's Complete Guide ...

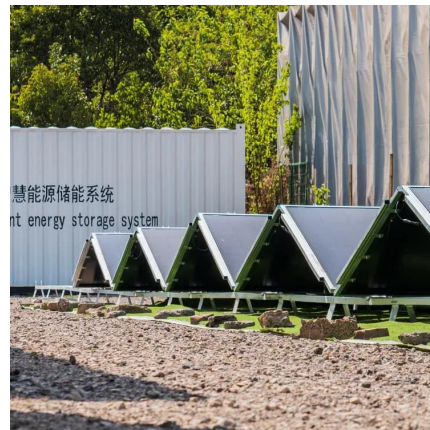
**Voltage Regulation:** The battery helps regulate voltage levels within the inverter system. It ensures that the output voltage remains stable, protecting sensitive appliances from ...

[WhatsApp](#)

### [What is a Battery Inverter? A Comprehensive Overview](#)

Common battery voltages include 12V, 24V, and 48V, and choosing the correct voltage is essential for compatibility. **Voltage Output:** This parameter indicates the voltage of ...

[WhatsApp](#)



### [Complete Guide to Inverter Batteries - NPP POWER](#)

Make sure the battery voltage aligns with your inverter's voltage (common options: 12V, 24V, or 48V). Research the expected lifespan of your battery type and review warranty ...

[WhatsApp](#)

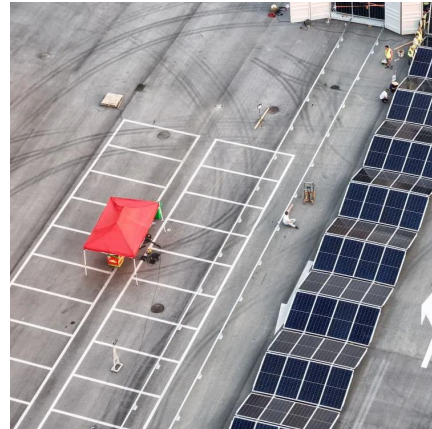


### [Discover the SMA battery inverter! , SMA Solar](#)

A battery inverter, also known as a DC to AC inverter, converts the direct current (DC) stored in a battery into alternating current (AC), which is the type of current typically used in homes, ...



[WhatsApp](#)



### How Inverter Battery Voltage Determines Maximum System ...

Inverter battery voltage significantly impacts solar system power and efficiency. Higher voltages like 48V reduce energy loss, manage heat, and support larger loads, extending component life.

[WhatsApp](#)



### TWING Car 1000w Inverter, 12v DC to 110v Power Inverters for ...

About this item Power Inverter 1000 Watt :The Home and outdoor Maxpart manufacturer Pro inverter provides dual 110V AC outlets with continuous DC to AC power output, converts 12V DC battery power to standard 110V AC, featuring 2 AC outlets and 2 USB ports ( QC 3.0 and ...

[WhatsApp](#)



### How to Choose the Right Inverter Battery Voltage for Your Needs

Understanding inverter battery voltage is key to creating a strong and dependable power system. This detailed guide explores how to choose the right voltage, offers tips for ...

[WhatsApp](#)



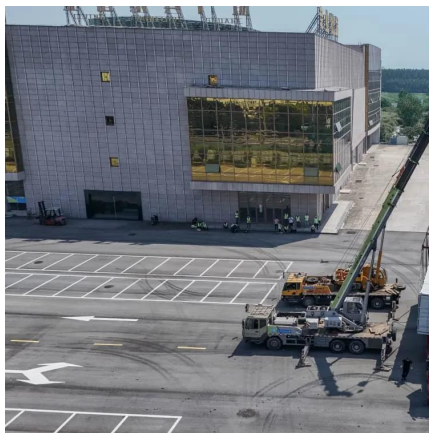




### [Battery Power Inverters at Tractor Supply Co.](#)

Power inverters are essential devices for anyone needing to convert DC power from a battery into AC power for various electronic devices. Whether you're on the road, at a job site, or ...

[WhatsApp](#)



### **When choosing an inverter, what voltage ratings should you pay**

Rated voltage is the standard operating voltage that an inverter is designed to handle. It's the voltage level that matches your grid or battery system for optimal performance. Rated voltage ...

[WhatsApp](#)

### [Solar, battery and hybrid inverters explained](#)

There are many different types of inverters now available including solar inverters, off-grid inverters and hybrid inverters. In this article, we explain what the different inverters are ...

[WhatsApp](#)



## Contact Us

For catalog requests, pricing, or partnerships, please visit:  
<https://www.straightta.co.za>