

Battery cabinet alarm flashes



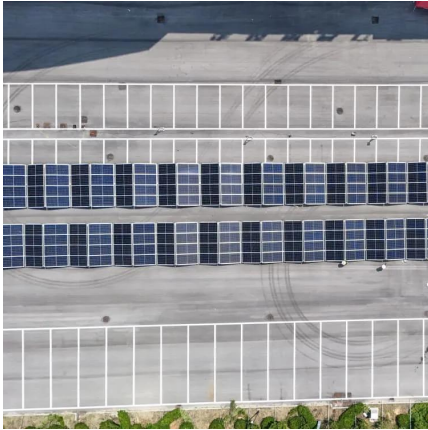


Overview

Low Battery: Many alarm systems will signal a low battery condition through a flashing light. False Alarms: An alarm might flash due to a false alert triggered by pets, environmental factors, or system errors. Now, let's dive into practical solutions to stop that annoying alarm light from flashing.



Battery cabinet alarm flashes



[Video: Why might my APC Back-UPS Product be beeping?](#)

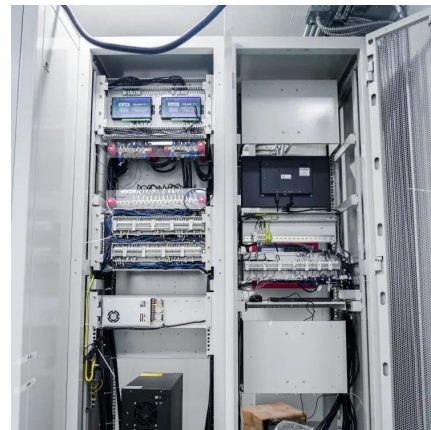
The Back-UPS product is operating on battery power - This alarm indicates that the UPS has transferred from On Line operation to On Battery operation. The Battery Power ...

[WhatsApp](#)

What Does The Red Vs Green Light Mean On A Smoke Detector?

Here's what you can do: Check the Battery - If the red light is flashing, check the battery and replace it if necessary. Make sure to use the right type of battery and install it ...

[WhatsApp](#)



Solved: Red flashing power light and a constant beep tone after

The flashing red light and constant tone is indicative of a "replace battery" condition. Normally to clear it, you would need to do self test, which is automatically done ...

[WhatsApp](#)



Solved: Back-UPS Pro 1500 battery with an "X" symbol is flashing

Its battery monitoring logic can become confused. Try resetting the unit: safely power down your attached load, turn the UPS off, and



disconnect everything from it.

[WhatsApp](#)



What Do the Green, Yellow, and Red Status Indicator Lights ...

What Do the Green, Yellow, and Red Status Indicator Lights Mean on Home Standby Generators? Green lights up when the utility power is present or when the generator ...

[WhatsApp](#)



APC BN650 M1 Flashing Red Light and Alarm Tone

A flashing red LED with constant tone typically indicates a battery disconnect alarm. This could mean that the battery is disconnected, dead (even though it is connected) or there ...

[WhatsApp](#)



What your beeping UPS is telling you , CyberPower Power Blog

The alarm will continue to beep until the UPS battery is drained or utility power is restored. The solution: Save your work and shutdown immediately or allow the management ...

[WhatsApp](#)

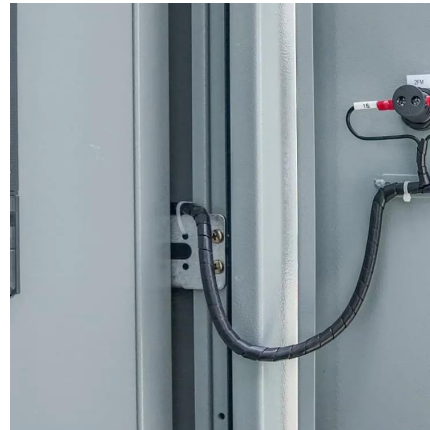




Why is my Back-UPS ES giving a Constant tone with the Power on

The Back-UPS ES performs an internal self-test every 14 days, the internal self-test checks the integrity of the battery. If the battery fails the self-test, the Power on LED will ...

[WhatsApp](#)



[beeping and flashing keypad -- Rampart Security Systems](#)

In all of these cases, the alarm system will notify you of the problem by beeping and flashing lights. It is annoying, but it is necessary that you know what is going on. Here's how to deal ...

[WhatsApp](#)

Contact Us

For catalog requests, pricing, or partnerships, please visit:
<https://www.straighta.co.za>