

Battery Base Station





Overview

How many batteries does the base station take?

The Base Station takes four (4) 1.2V, 1300mAh nickel-metal hydride (NiMH) rechargeable batteries. Regular alkaline batteries should never be inserted into the Base Station, as they may damage the device. Once you have acquired the necessary NiMH rechargeable batteries, you can follow the steps below to replace them:.

Do I need to replace my base station's batteries?

If you're not certain which system you have, see the Which Version of the SimpliSafe® System Do I Have article. You will likely never need to replace your Base Station's batteries as they are rechargeable and meant to last. The Base Station takes four (4) 1.2V, 1300mAh nickel-metal hydride (NiMH) rechargeable batteries.

Which battery is best for telecom base station backup power?

Among various battery technologies, Lithium Iron Phosphate (LiFePO4) batteries stand out as the ideal choice for telecom base station backup power due to their high safety, long lifespan, and excellent thermal stability.

Can you put alkaline batteries in a base station?

NEVER insert regular alkaline batteries into the Base Station as they may damage the device. Plug your Base Station back into power. Was this helpful?

Does your Keypad look like the one pictured to the left?

.

What makes a telecom battery pack compatible with a base station?

Compatibility and Installation Voltage Compatibility: 48V is the standard voltage for telecom base stations, so the battery pack's output voltage must



align with base station equipment requirements. Modular Design: A modular structure simplifies installation, maintenance, and scalability.

What is a 48V 100Ah LiFePO4 battery pack?

Our 48V 100Ah LiFePO4 battery pack, designed specifically for telecom base stations, offers the following features: High Safety: Built with premium cells and an advanced BMS for stable and secure operation. Long Lifespan: Over 2,000 cycles, significantly reducing replacement and maintenance costs.



Battery Base Station



Custom Battery Pack Manufacturing,Lithium Battery,LiFePO4 ...

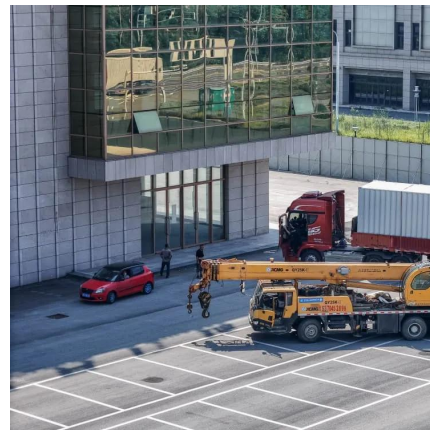
Our power stations feature an IP65-rated enclosure, offering excellent protection against water and dust. It is ideal for installation in lofts or outdoor environments.

[WhatsApp](#)

[Upgrading or Replacing Your Ring Alarm Base Station](#)

We've made it easier to replace and upgrade your Base Station from a Ring Alarm to the Ring Alarm Pro version. The app will help you save all of your existing Ring Alarm devices and ...

[WhatsApp](#)



Custom Battery Pack Manufacturing,Lithium Battery,LiFePO4 ...

With over 20 years of expertise in battery manufacturing, we specialize in delivering tailored battery solutions for various industries. Understanding that different applications demand ...

[WhatsApp](#)



Empowering Base Stations: Unveiling the 48V 50Ah LiFePO4 ...

Discover the cutting-edge 48V 50Ah LiFePO4 battery pack designed to address the challenges of base station power distribution and



maintenance. Explore its modular design, advanced ...

[WhatsApp](#)



Learn More About CTECHI: Your Trusted Energy Storage Partner

One Stop Battery Product Service and Solutions
20 years Energy Storage Expert Shenzhen
CTECHI Technology Co., Ltd., with 20 years of
dedication to the energy storage industry, ...

[WhatsApp](#)



[Explore CTECHI in the Media: Insights and Updates](#)

In order to meet the needs of the communication base station industry, lithium iron phosphate battery packs are mainly available in 12V and 48V modules. The capacity levels are 10Ah, ...

[WhatsApp](#)



Reliable Power Source: 12V10Ah LiFePO4 Battery Pack for ...

Designed for reliability and sustainability, this compact and efficient battery pack ensures a consistent power source for various applications. Whether for solar systems, electric vehicles, ...

[WhatsApp](#)





?Remove batteries from Gen 3 base station , SimpliSafe Support ...

I am moving and want to disable the base station by removing the batteries. How do I do that on the Gen 3? They don't seem to be in the base like the older model.

[WhatsApp](#)



How To Replace Base Station Batteries , SimpliSafe Support Home

You will likely never need to replace your Base Station's batteries as they are rechargeable and meant to last. The batteries in the Base Station are Nickel Metal Hydride (NiMH) ...

[WhatsApp](#)

Stay Cool Anywhere: Portable Air Conditioner for Outdoor Comfort

Beat the heat wherever your adventures take you with our Portable Air Conditioner. Designed for outdoor enthusiasts, this compact and versatile cooling solution ensures you stay comfortable ...

[WhatsApp](#)



Portable Power Anywhere: 19.2V180Ah 576Wh Power Station for ...

Experience the freedom of on-the-go power with our 19.2V180Ah 576Wh Portable Power Station. Compact and powerful, this energy solution is perfect for camping, outdoor adventures, and ...

[WhatsApp](#)



Contact Us

For catalog requests, pricing, or partnerships, please visit:
<https://www.straighta.co.za>