

Battery BMS Application





Overview

A battery management system (BMS) is any electronic system that manages a (or) by facilitating the safe usage and a long life of the battery in practical scenarios while monitoring and estimating its various states (such as and), calculating secondary data, reporting that data, controlling its environment, authenticating or it.



Battery BMS Application



[Battery Management System \(BMS\) Detailed Explanation: ...](#)

Battery Management System (BMS) is the "intelligent manager" of modern battery packs, widely used in fields such as electric vehicles, energy storage stations, and consumer ...

[WhatsApp](#)

Battery management system

A battery management system (BMS) is any electronic system that manages a rechargeable battery (cell or battery pack) by facilitating the safe usage and a long life of the battery in practical scenarios while monitoring and estimating its various states (such as state of health and state of charge), calculating secondary data, reporting that data, controlling its environment, authenticating or balancing it.

[WhatsApp](#)



Applications of artificial neural network based battery ...

However, lithium-ion batteries still face limitations, particularly concerning safety issues such as overheating and aging. BMS play a crucial role in ensuring safe and effective ...

[WhatsApp](#)

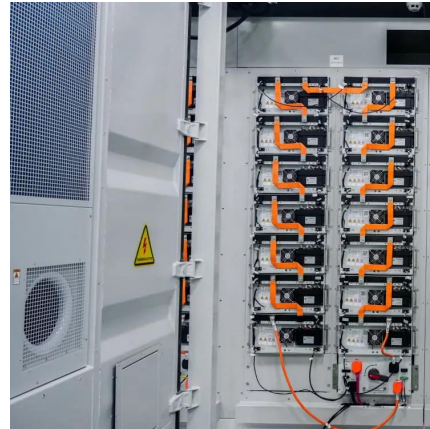
What is a Battery Management System? Complete Guide to BMS ...

The necessity of a battery management system



depends primarily on the battery chemistry, application requirements, and safety considerations. For simple, low-energy ...

[WhatsApp](#)



Battery Management System (BMS) in Battery Energy Storage ...

Learn about the role of Battery Management Systems (BMS) in Battery Energy Storage Systems (BESS). Explore its key functions, architecture, and how it enhances safety, ...

[WhatsApp](#)



[Battery BMS installation](#), [Battery Manufacturing Tech](#)

Elevate energy solutions with the battery production technology from BBS Automation. Elevate your battery cell production with scalable turnkey solutions. Get in touch today

[WhatsApp](#)



Applications of artificial neural network based battery ...

Additionally, fault detection of lithium-ion batteries is an essential function of BMS. Given the complex electrochemical characteristics of lithium-ion batteries, there is a growing ...

[WhatsApp](#)





What is a Battery Management System (BMS)? Essential Guide ...

Engineers choose BMS architecture based on their application needs, battery size, redundancy requirements, and budget. Each design offers unique benefits and trade-offs that ...

[WhatsApp](#)



[Battery Management Systems \(BMS\): A Complete Guide](#)

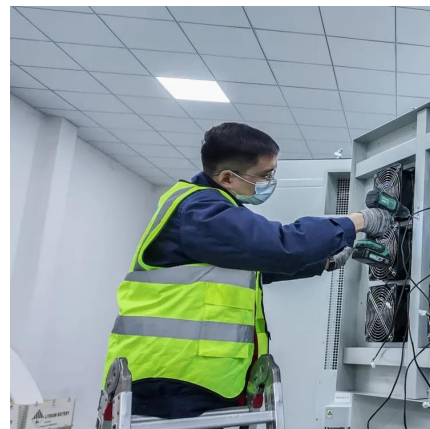
A Battery Management System (BMS) is essential for ensuring the safe and efficient operation of battery-powered systems. From real-time monitoring and cell balancing to thermal ...

[WhatsApp](#)

[Technical Deep Dive into Battery Management System BMS](#)

BMSs are used in various applications, including Electric Vehicles (EVs), smartphones, renewable energy storage systems, and other devices powered by rechargeable batteries.

[WhatsApp](#)



What Is a BMS in Batteries? Definition, Functions, and Applications

A Battery Management System is not just a feature--it's the foundation of safety, performance, and longevity for any battery-powered solution. Whether you're designing an ...

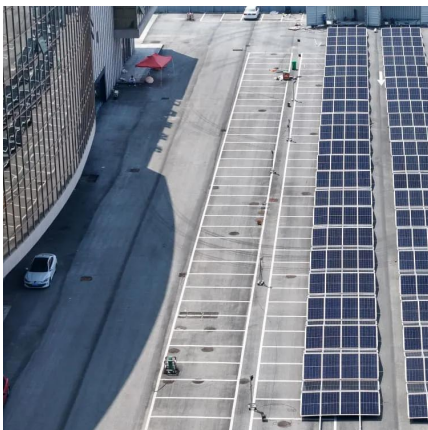
[WhatsApp](#)



What is a Battery Management System? Complete Guide to BMS ...

A Battery Management System (BMS) is an electronic control unit that monitors and manages rechargeable battery packs to ensure safe operation, optimal performance, and ...

[WhatsApp](#)



BMS Boards: A Practical Guide for Beginners and Experts Alike

For example, in an automotive application, the BMS board needs to be highly reliable to ensure the safe and efficient operation of the electric vehicle's battery system over ...

[WhatsApp](#)

Contact Us

For catalog requests, pricing, or partnerships, please visit:
<https://www.straighta.co.za>