

# Base station power supply changed to solar cell





## Overview

---

Are solar powered cellular base stations a viable solution?

Cellular base stations powered by renewable energy sources such as solar power have emerged as one of the promising solutions to these issues. This article presents an overview of the state-of-the-art in the design and deployment of solar powered cellular base stations.

Are solar powered base stations a good idea?

Base stations that are powered by energy harvested from solar radiation not only reduce the carbon footprint of cellular networks, they can also be implemented with lower capital cost as compared to those using grid or conventional sources of energy . There is a second factor driving the interest in solar powered base stations.

What are the components of a solar powered base station?

solar powered BS typically consists of PV panels, batteries, an integrated power unit, and the load. This section describes these components. Photovoltaic panels are arrays of solar PV cells to convert the solar energy to electricity, thus providing the power to run the base station and to charge the batteries.

How much power does a macro base station use?

Among these, macro base stations are the primary ones in terms of deployment and have power consumption ranging from 0.5 to 2 kW. BSs consume around 60% of the overall power consumption in cellular networks. Thus one of the most promising solutions for green cellular networks is BSs that are powered by solar energy.

How does the range of base stations affect energy consumption?

This in turn changes the traffic load at the BSs and thus their rate of energy consumption. The problem of optimally controlling the range of the base



stations in order to minimize the overall energy consumption, under constraints on the minimum received power at the MTs is NP-hard.

How much power does a base station use?

BSs are categorized according to their power consumption in descending order as: macro, micro, mini and femto. Among these, macro base stations are the primary ones in terms of deployment and have power consumption ranging from 0.5 to 2 kW. BSs consume around 60% of the overall power consumption in cellular networks.



## Base station power supply changed to solar cell

---



### Mobile base station site as a virtual power plant for grid stability

Furthermore, it seeks to determine if the full activation time can meet the requirements of an FFR product. The system consists of a live mobile base station site with a ...

[WhatsApp](#)

### Renewable Energy Sources for Power Supply of Base Station Sites

Since base stations are major consumers of cellular networks energy with significant contribution to operational expenditures, powering base stations sites using the energy of wind, sun, fuel ...

[WhatsApp](#)



### Grid-connected solar-powered cellular base-stations in Kuwait

In [9], the potentials of utilizing a PV-DG-BB system in various cell-sites across Nigeria have been studied, and shown to be the optimal for BS electrification in comparison to ...

[WhatsApp](#)

### [Renewable Energy Sources for Power Supply of Base ...](#)

Abstract -- An overview of research activity in the area of powering base station sites by means of renewable energy sources is given. It is shown



that mobile network operators express ...

[WhatsApp](#)



### **How Solar Energy Systems are Revolutionizing Communication ...**

Various policies that governments have adopted, such as auctions, feed-in tariffs, net metering, and contracts for difference, promote solar adoption, which encourages the use ...

[WhatsApp](#)



### **Solar Power Supply Systems for Communication Base Stations: ...**

A solar power supply system for communication base stations is an innovative solution that utilizes solar photovoltaic power generation technology to provide power to communication ...

[WhatsApp](#)



### **Telecom Base Station PV Power Generation System Solution**

The communication base station installs solar panels outdoors, and adds MPPT solar controllers and other equipment in the computer room. The power generated by solar energy is used by ...

[WhatsApp](#)



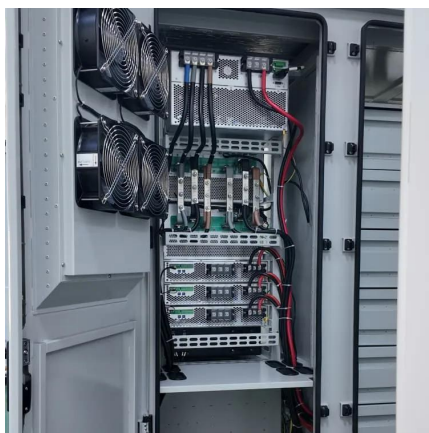




### **Solar Powered Cellular Base Stations: Current Scenario, Issues ...**

Cellular base stations powered by renewable energy sources such as solar power have emerged as one of the promising solutions to these issues. This article presents an ...

[WhatsApp](#)



### **Solar Powered Cellular Base Stations: Current Scenario, ...**

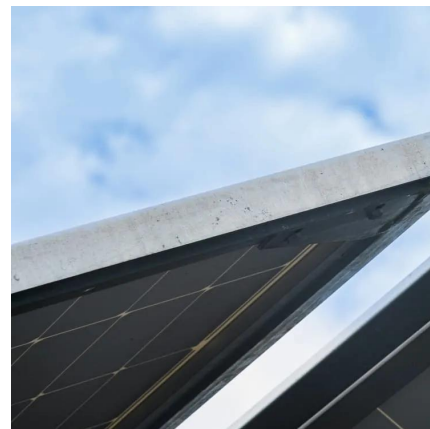
Cellular base stations powered by renewable energy sources such as solar power have emerged as one of the promising solutions to these issues. This article presents an overview of the ...

[WhatsApp](#)

### **(PDF) FEASIBILITY STUDY OF SOLAR PV- FUEL CELL HYBRID POWER ...**

The feasibility study evaluates a solar PV-fuel cell hybrid power system intended for remote telecom base stations in Ghana, specifically focusing on the Buduburam ATC Telecom Base ...

[WhatsApp](#)



### **A review of renewable energy based power supply options for ...**

Moreover, information related to growth of the telecom industry, telecom tower configurations and power supply needs, conventional power supply options, and hybrid system ...

[WhatsApp](#)



### Hybrid solar PV/hydrogen fuel cell-based cellular base-stations in

This paper has studied the potentials of utilizing solar PV panels with HFCs to power cellular base-stations in Kuwait. Particularly, various models for off-grid hybrid PV/HFC ...

[WhatsApp](#)



### Site Energy Revolution: How Solar Energy Systems Reshape ...

Let's explore how solar energy is reshaping the way we power our communication networks and how it can make these stations greener, smarter, and more self-sufficient.

[WhatsApp](#)

### Energy Management Strategy for Distributed Photovoltaic 5G Base Station

The sharp increase in energy consumption imposes enormous pressure on grid power supply and operation costs [7], thus attracting increasing attention regarding the ...

[WhatsApp](#)





### **The Meshtastic Base Station: Components, Setup, and Benefits**

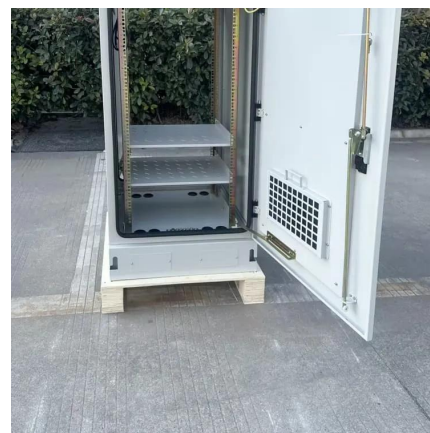
A Meshtastic base station can be equipped with a stable power supply, such as solar panels or a direct connection to the power grid. This enhanced power management ...

[WhatsApp](#)

### **Toward Net-Zero Base Stations with Integrated and Flexible Power Supply**

The energy consumption and carbon emissions of base stations (BSs) raise significant concerns about future network deployment. Renewable energy is thus adopted and supplied to enable ...

[WhatsApp](#)



### **How Solar Energy Systems are Revolutionizing Communication Base**

Various policies that governments have adopted, such as auctions, feed-in tariffs, net metering, and contracts for difference, promote solar adoption, which encourages the use ...

[WhatsApp](#)

## **Contact Us**

---

For catalog requests, pricing, or partnerships, please visit:  
<https://www.straightta.co.za>