

Base station communication power box





Overview

What is a communication base station?

Communication base station setups will usually include a wide array of different technologies, including power supplies, data servers, head end, radio repeaters, and communication systems that allow for high-speed continuous information flow. It can also be used as part of a leaky feeder system in the communication network.

What are the components of a base station?

Power Supply: The power source provides the electrical energy to base station elements. It often features auxiliary power supply mechanisms that guarantee operation in case of lost or interrupted electricity, during blackouts. **Baseband Processor:** The baseband processor is responsible for the processing of the digital signals.

Why are base stations important in cellular communication?

Base stations are important in the cellular communication as it facilitate seamless communication between mobile devices and the network communication. The demand for efficient data transmission are increased as we are advancing towards new technologies such as 5G and other data intensive applications.

How does a base station work?

It usually connects the device to other networks or devices through a dedicated high bandwidth wire of fiber optic connection. Base stations typically have a transceiver, capable of sending and receiving wireless signals; Otherwise if they only send the trailer it will be considered a transmitter or broadcast point only.

What are the properties of a base station?

Here are some essential properties: **Capacity:** Capacity of a base station is its



capability to handle a given number of simultaneous connections or users.

Coverage Area: The coverage area is a base station is that geographical area within which mobile devices can maintain a stable connection with the base station.

Why do we need a base station?

Technological advancements: The New technologies result in evolved base stations that support upgrades and enhancements such as 4G, 5G and beyond, its providing faster speeds with better bandwidth.

Emergency services: They provide access to emergency services, so that in case of emergency, people can call through their mobile phones.



Base station communication power box



[Telecom Base Station Power System Solution](#)

In order to ensure the continuity and efficiency of communication services, the power system of telecommunications base stations needs to have high reliability, stability and high efficiency to ...

[WhatsApp](#)

[Communication Base Station Backup Battery](#)

When natural disasters cut off power grids, when extreme weather threatens power supply safety, our communication backup power system with intelligent charge/discharge management and ...

[WhatsApp](#)



[UHF Base Stations for Urban and Indoor Communication](#)

Explore BelFone's advanced UHF base stations, designed for superior indoor and urban communication. Discover reliable, durable, and customizable solutions for industries, public ...

[WhatsApp](#)

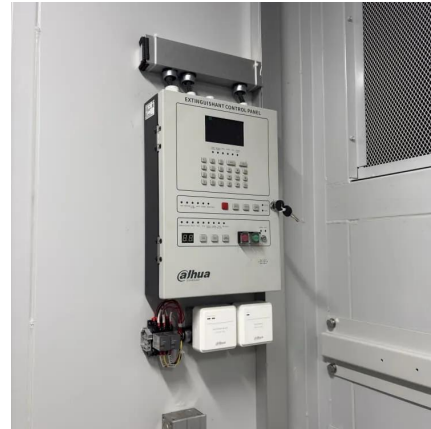
Selecting the Right Supplies for Powering 5G Base Stations

These tools simplify the task of selecting the right power management solutions for these devices and, thereby, provide an optimal power



solution for 5G base stations components.

[WhatsApp](#)



Optimizing the power supply design for communication base stations

Comprehensively evaluate various factors and select the most suitable power system design scheme to ensure the stable and reliable operation of the base station.

[WhatsApp](#)



Smart Power of Communication Base Station

Installing a smart switch module at an unattended basic station, the smart switch module can collect data in real time and use the data to display on a visual management platform to help ...

[WhatsApp](#)



Area of Refuge Communication System & Phones , Kings III

Area of Refuge Callbox Components These systems consists of three components: A call box in the designated area of rescue location A location for the base station, or the central control ...

[WhatsApp](#)





Huawei BBU5900 Baseband Unit, Base Station Communication ...

The Huawei BBU5900 designed to handle the processing of baseband signals in a base station. This unit is a crucial component in Huawei's telecom infrastructure, supporting multi-band, ...

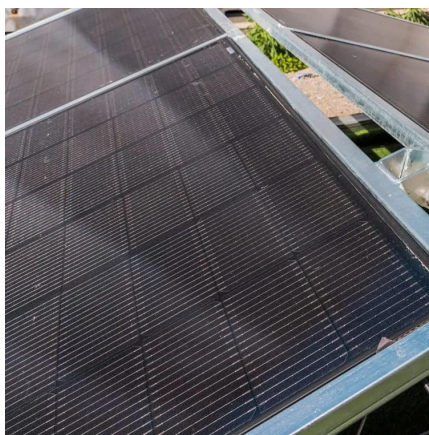
[WhatsApp](#)



Selecting the Right Supplies for Powering 5G Base Stations

These tools simplify the task of selecting the right power management solutions for these devices and, thereby, provide an optimal power solution for 5G base stations components.

[WhatsApp](#)



[Top 5 CB Base Stations: Your Ultimate Buying Guide](#)

Choosing a CB base station is more than just picking a box; it's about ensuring clear communication, reliable performance, and a setup that fits your needs. Many people get ...

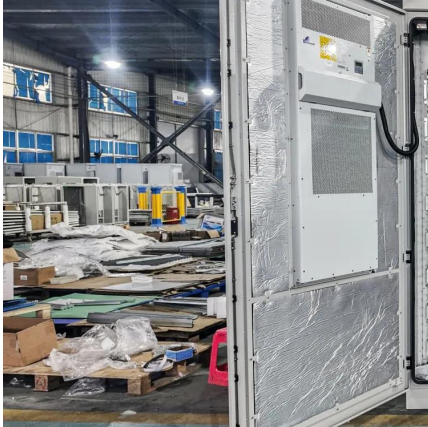
[WhatsApp](#)



[Communication Base Station Energy Solutions](#)

Due to harsh climate conditions and the absence of on-site personnel to maintain fuel generators, the company required a reliable solution to ensure the base station's stable operation and ...

[WhatsApp](#)



[SmartRescue Base Stations \(2500 Series\)](#)

Equipped with built-in battery backup, these base stations ensure uninterrupted communication even during power failures. Designed for smaller installations of up to 10 call boxes, the ...

[WhatsApp](#)



Contact Us

For catalog requests, pricing, or partnerships, please visit:
<https://www.straighta.co.za>