

Base station communication equipment power generation





Overview

What are the components of a base station?

Power Supply: The power source provides the electrical energy to base station elements. It often features auxiliary power supply mechanisms that guarantee operation in case of lost or interrupted electricity, during blackouts.

Baseband Processor: The baseband processor is responsible for the processing of the digital signals.

What is a base station?

What is Base Station?

A base station represents an access point for a wireless device to communicate within its coverage area. It usually connects the device to other networks or devices through a dedicated high bandwidth wire of fiber optic connection. Base stations typically have a transceiver, capable of sending and receiving wireless signals;.

Why are base stations important in cellular communication?

Base stations are important in the cellular communication as it facilitate seamless communication between mobile devices and the network communication. The demand for efficient data transmission are increased as we are advancing towards new technologies such as 5G and other data intensive applications.

What are the properties of a base station?

Here are some essential properties:

Capacity: Capacity of a base station is its capability to handle a given number of simultaneous connections or users.

Coverage Area: The coverage area is a base station is that geographical area within which mobile devices can maintain a stable connection with the base station.

Why do we need a base station?



Technological advancements: The New technologies result in evolved base stations that support upgrades and enhancements such as 4G, 5G and beyond, its providing faster speeds with better bandwidth. Emergency services: They provide access to emergency services, so that in case of emergency, people can call through their mobile phones.

What are the different types of base stations?

Some basic types of base stations are as follows: Macro-base stations are tall towers ranging from 50 to 200 feet in height, placed at strategic locations to provide maximum coverage in a given area. Those are equipped with large towers and antennas that transmit and receive radio signals from wireless devices.



Base station communication equipment power generation



[Solar energy storage 25.6V 100ah wall-mounted Lifepo4](#)

Off-grid application: In some remote areas or places without power grid coverage, such as field workstations, communication base stations, etc., it is combined with solar panels to form an off ...

[WhatsApp](#)

Technical Requirements and Market Prospects of 5G Base Station ...

With the rapid development of 5G communication technology, global telecom operators are actively advancing 5G network construction. As a core component supporting ...

[WhatsApp](#)



Solar Power Supply Systems for Communication Base Stations: ...

With continuous technological advancements and further cost reductions, solar power supply systems for communication base stations will become one of the mainstream power supply ...

[WhatsApp](#)



[Telecom Base Station Power System Solution](#)

In order to ensure the continuity and efficiency of communication services, the power system of telecommunications base stations needs to have high reliability, stability and high efficiency to ...



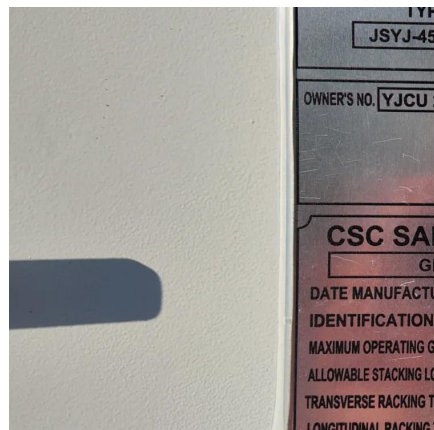
[WhatsApp](#)



Communication base station-solar power supply solution system

For the power supply of communication base stations in the area, the communication base stations use solar power generation systems, which do not require energy distribution, are not ...

[WhatsApp](#)



Optimum sizing and configuration of electrical system for

This study develops a mathematical model and investigates an optimization approach for optimal sizing and deployment of solar photovoltaic (PV), battery bank storage ...

[WhatsApp](#)



[Communication Base Station Energy Solutions](#)

Due to harsh climate conditions and the absence of on-site personnel to maintain fuel generators, the company required a reliable solution to ensure the base station's stable operation and ...

[WhatsApp](#)





Resource management in cellular base stations powered by ...

This paper aims to consolidate the work carried out in making base station (BS) green and energy efficient by integrating renewable energy sources (RES). Clean and green ...

[WhatsApp](#)



Selecting the Right Supplies for Powering 5G Base Stations

These tools simplify the task of selecting the right power management solutions for these devices and, thereby, provide an optimal power solution for 5G base stations components.

[WhatsApp](#)

[Communication Base Station Power Amplifier PCB Solution](#)

An ideal base station power amplifier must exhibit high linearity to prevent signal distortion, high power efficiency to minimize energy consumption and heat, broad bandwidth to ...

[WhatsApp](#)



Collaborative optimization of distribution network and 5G base stations

In this paper, a distributed collaborative optimization approach is proposed for power distribution and communication networks with 5G base stations. Firstly, the model of 5G ...

[WhatsApp](#)



Optimizing the power supply design for communication base stations

Comprehensively evaluate various factors and select the most suitable power system design scheme to ensure the stable and reliable operation of the base station.

[WhatsApp](#)



Optimised configuration of multi-energy systems considering the

Before considering the flexibility quota mechanism, communication base stations must utilise their low-cost power-generation advantages to sell electricity to the grid as much ...

[WhatsApp](#)

Selecting the Right Supplies for Powering 5G Base Stations

These tools simplify the task of selecting the right power management solutions for these devices and, thereby, provide an optimal power solution for 5G base stations components.

[WhatsApp](#)





Energy-Efficient Base Stations , part of Green Communications

This chapter aims a providing a survey on the Base Stations functions and architectures, their energy consumption at component level, their possible improvements and the major problems ...

[WhatsApp](#)

Contact Us

For catalog requests, pricing, or partnerships, please visit:
<https://www.straighta.co.za>