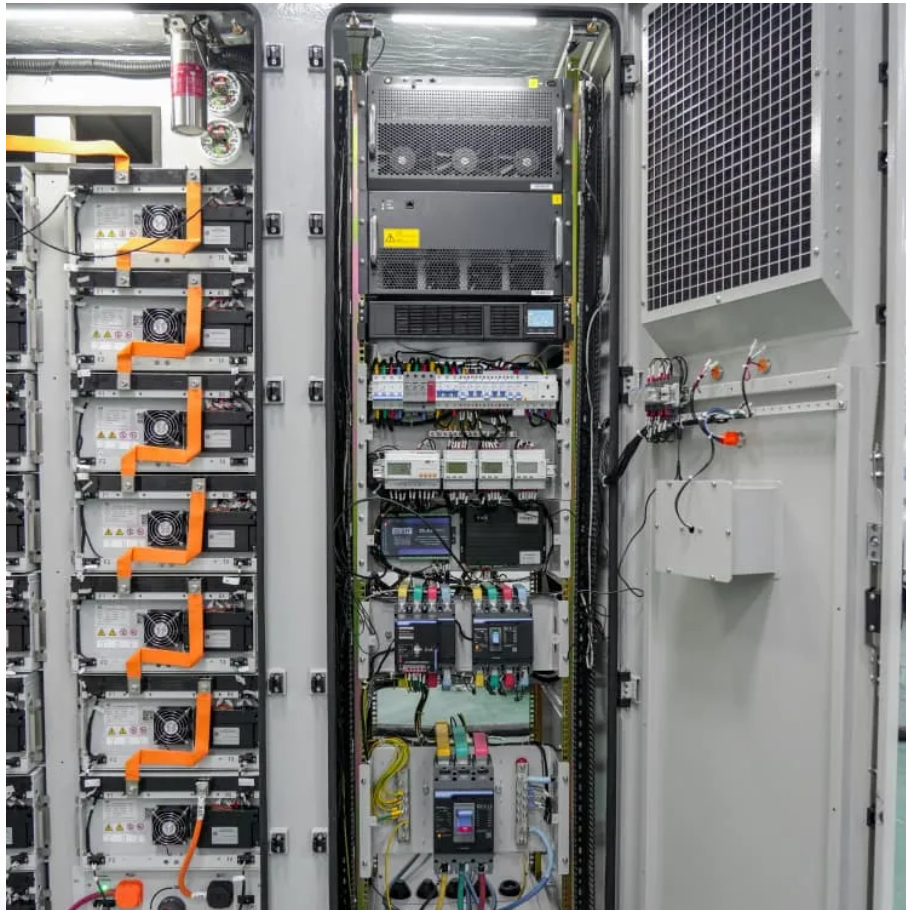


Base station communication equipment introduction





Overview

What is the role of a base station in wireless communication?

Base stations are critical components in wireless communication networks, serving as the intermediary between mobile devices and the core network. They play a vital role in ensuring seamless connectivity, efficient data transmission, and reliable communication services.

What is a base station in telecommunications?

In telecommunications, a base station is a fixed transceiver that is the main communication point for one or more wireless mobile client devices. A base station serves as a central connection point for a wireless device to communicate.

What is a base station in a wireless network?

At the heart of wireless communication networks are base stations, which act as the gateway between wireless devices and the network infrastructure. Base stations are responsible for transmitting and receiving data to and from wireless devices, as well as managing network resources and ensuring reliable and efficient communication.

What does a base station do?

Base stations are responsible for transmitting and receiving data to and from wireless devices, as well as managing network resources and ensuring reliable and efficient communication. The basic function of a base station is to convert wireless signals into digital signals that can be transmitted over a wired network infrastructure.

How does a base station communicate with a client device?

Generally, if client devices wanted to communicate to each other, they would communicate both directly with the base station and do so by routing all traffic through it for transmission to another device. Base stations in cellular



telephone networks are more commonly referred to as cell towers.

Is a base station a transmitter or broadcast point?

Base stations are generally a transceiver, capable of sending and receiving wireless signals; otherwise, if they only transmitted signals out, they would be considered a transmitter or broadcast point. A base station will have one or more radio frequency (RF) antennas to transmit and receive RF signals to other devices.



Base station communication equipment introduction



The Base Station in Wireless Communications: The Key to ...

Equipped with an electromagnetic wave antenna, often placed on a tall mast, the base station enables communication between mobile terminals (such as mobile phones or ...

[WhatsApp](#)

[Base Station \(base transceiver station\) overview](#)

A base station in telecom is a communication point that serves as a point of access for connecting mobile devices to the network and vice versa. Think of it as the middleman that connects your

[WhatsApp](#)



Standardizing a new paradigm in base station architecture

New antenna-integrated base station architectures were emerging and looking forward, an exciting breakthrough in the feasibility of using millimetre wave technologies was ...

[WhatsApp](#)

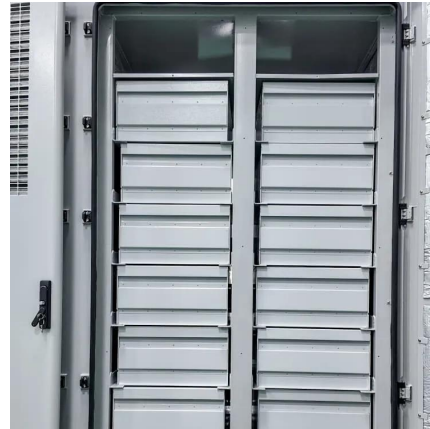
What Is the Role of a Base Station in Wireless Communication?

Base stations are critical components in wireless communication networks, serving as the intermediary between mobile devices and the



core network. They play a vital role in ...

[WhatsApp](#)



Telecom base station system introduction,application,characteristics

The EverExceed ECB series telecommunications base station system is a new generation of outdoor multi energy integrated power supply system with MPPT function. ...

[WhatsApp](#)



INTRODUCTION TO CELLULAR MOBILE RADIO ...

The base stations consist of several transmitters and receivers, which simultaneously handle full duplex communications and generally have towers that support several transmitting and ...

[WhatsApp](#)



Contact Us

For catalog requests, pricing, or partnerships, please visit:
<https://www.straighta.co.za>