

Base station communication equipment basic design





Overview

The guide then describes basic equipment needed in a base station: a transceiver (transmitter and receiver), a control device, microphone and speaker, a transmission line, and an antenna.



Base station communication equipment basic design



4G LTE Tutorial: Basics, Architecture, Channels, and More

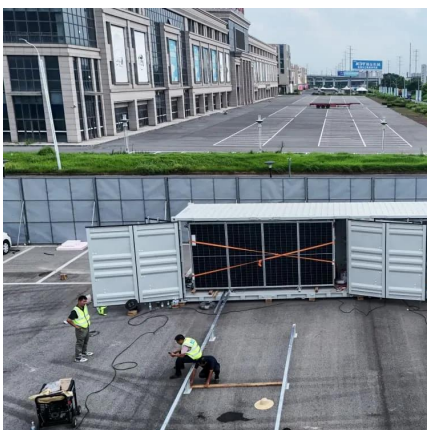
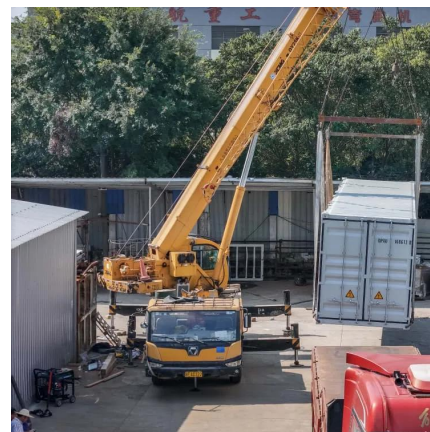
LTE Terminology Evolved NodeB (eNodeB): LTE base station responsible for radio communication with user equipment (UE). User Equipment (UE): Any device that interacts with ...

[WhatsApp](#)

Quick guide: components for 5G base stations and antennas

Base stations A 5G network base-station connects other wireless devices to a central hub. A look at 5G base-station architecture includes various equipment, such as a 5G ...

[WhatsApp](#)



Guide for the Selection of Communication Equipment for ...

A communication system is made up of devices that employ one of two communication methods (wireless or wired), different types of equipment (portable radios, mobile radios, base/fixed ...

[WhatsApp](#)

Guide to Base Station Communications Equipment , Office of ...

This guide presents background information to help law enforcement agencies analyze their base station equipment needs and select



superior equipment to provide reliable communication ...

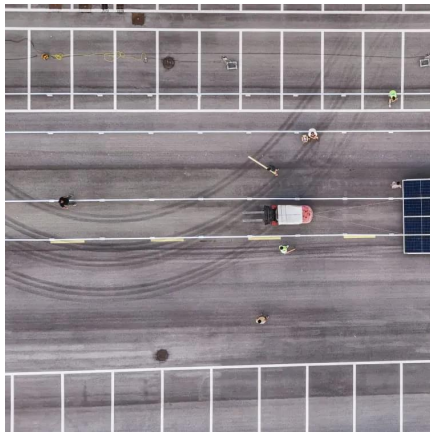
[WhatsApp](#)



The Base Station in Wireless Communications: The Key to ...

Equipped with an electromagnetic wave antenna, often placed on a tall mast, the base station enables communication between mobile terminals (such as mobile phones or ...

[WhatsApp](#)



Contact Us

For catalog requests, pricing, or partnerships, please visit:
<https://www.straighta.co.za>