

Back of single-glass and double-glass modules





Overview

Are double-glass modules better than single-sided glass panels?

However, advancements in glass technology have mitigated this issue to some extent. Weight: Double-glass modules are generally heavier than single-sided glass panels due to the additional glass layer. Applications: Double-glass modules are well-suited for environments with harsh weather conditions, high humidity, or corrosive elements.

What is a double glass (Dual Glass) solar panel?

A double glass (Dual Glass) solar panel is a glass-glass module structure where a glass layer is used on the back of the modules instead of the traditional polymer backsheet. Double glass solar panels were originally heavy and expensive, but the lighter polymer backing panels gained most of the market share.

Why should you choose a double glass module?

Durability: Double-glass modules are more robust and resistant to environmental stressors, such as moisture, UV radiation, and temperature fluctuations. The dual glass layers provide enhanced protection against physical damage, moisture ingress, and degradation over time.

What is the difference between Raytech double glass solar modules?

Whereas for Raytech double-glass solar modules, with the increased strength brought by two layers of glass, a lot less deformation will happen in the solar cells, the possibility of microcracks formed on the solar cells will decrease significantly.

Are double-glass solar modules reactive or non-reactive?

Furthermore, comparing to plastic backsheets (the back material of single-glass solar module) which are reactive, glass is non-reactive. This means that the whole structure of Raytech double-glass solar modules (two layers of glass



and one layer of solar cells in the middle) are highly resistant to chemical reactions such as corrosion as a whole.

What is the difference between double-glass solar panels and single-sided solar panels?

The main difference between double-glass photovoltaic modules and single-sided glass solar panels lies in their construction and design, which can impact their durability, performance, and applications. Construction: Double-glass modules consist of two layers of glass sandwiching the solar cells and other components.



Back of single-glass and double-glass modules



[What are the advantages of dual-glass Dualsun modules?](#)

The thickness of the front glass generally used for this type of structure is 3.2 mm. Dual-glass type modules (also called double glass or glass-glass) are made up of two glass surfaces, on the ...

[WhatsApp](#)

[Are double-glass photovoltaic panels easy to install](#)

A double glass (Dual Glass) solar panel is a glass-glass module structure where a glass layer is used on the back of the modules instead of the traditional polymer backsheet. ...

[WhatsApp](#)



Single-glass versus double-glass: a deep dive into module ...

There has been a notable shift from the initial single-facial single-glass modules to bifacial double-glass modules. Double-glass modules, with their performance in the face of

[WhatsApp](#)



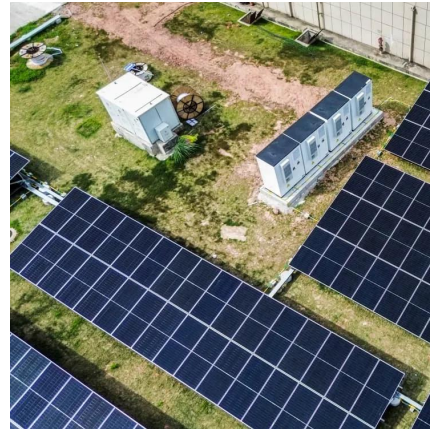
The Difference Between Bifacial Module and Double Glass Bifacial Module

Bifacial solar modules and double glass bifacial solar modules are both types of solar panels designed to capture sunlight from both sides



(front and back) to generate ...

[WhatsApp](#)



The Difference Between Double-glass and Single-sided Glass ...

The main difference between double-glass photovoltaic modules and single-sided glass solar panels lies in their construction and design, which can impact their durability, ...

[WhatsApp](#)



[Canadian Solar TOPCon Module Technical White Paper](#)

Since 2019, CSI Solar has been developing N-type TOPCon (Tunnel Oxide Passivated Contacts) technologies, and now launches a diversified TOPCon module portfolio covering both 182mm ...

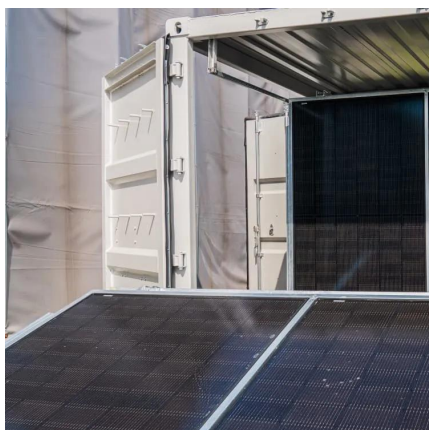
[WhatsApp](#)



What are the differences between single-glass and double-glass ...

The benefits of replacing the opaque backsheet with glass outweigh its disadvantages: For a conventional solar panel, when the snow gets thick or people step on it ...

[WhatsApp](#)





Difference Between Single Glass and Double Glass Solar Panels

The main point of difference between single glass and double glass panels is the layers of glass that bring all the other differences. Single glass panels are more affordable, and easier to ...

[WhatsApp](#)



What is the Double Glass (Dual Glass) Photovoltaic Solar Panel?

Glass-glass module structures (Dual Glass or Double Glass) is a technology that uses a glass layer on the back of the modules instead of the traditional polymer backsheet.

[WhatsApp](#)

Glass-to-Transparent Backsheet vs. Glass-to-Glass Solar Modules...

These modules feature glass on both the front and back, sandwiching the solar cells between two layers of heat-treated, tempered glass. This design enhances the module's ...

[WhatsApp](#)



What advantages does double glass solar photovoltaic panels ...

SOLAR Photovoltaic Panels Double-sided modules are photovoltaic modules that can generate electricity on both sides. When the sun shines on double-sided modules, part of the direct ...

[WhatsApp](#)



Contact Us

For catalog requests, pricing, or partnerships, please visit:
<https://www.straighta.co.za>