

# **BMS function in lithium battery**





## Overview

---

A Battery Management System (BMS) is a system that monitors and manages a lithium-ion battery pack. It ensures the safe and efficient operation of the battery by balancing its cells, managing charging and discharging processes, and protecting the battery from potential hazards.



## BMS function in lithium battery

---



### BMS for Lithium-Ion Batteries: The Essential Guide to Battery

What is a BMS for Lithium-Ion Batteries? A Battery Management System (BMS) is an electronic control system that manages rechargeable battery packs by monitoring their ...

[WhatsApp](#)

### Understanding Battery Management Systems (BMS) in Lithium Batteries

At its core, a BMS acts as a traffic light for the battery --controlling whether the battery can charge or discharge based on a set of critical parameters. Think of the BMS as a computerized ...

[WhatsApp](#)



### What Is a Lithium Battery Management System and How Does It ...

By balancing cell voltages and disconnecting faulty cells, it mitigates risks like thermal runaway, ensuring safe operation in electric vehicles, renewable energy storage, and ...

[WhatsApp](#)



### [Battery Management Systems for Lithium-Ion Packs](#)

In essence, a BMS is an essential component that assures the safe and efficient operation of lithium-ion batteries. It helps to guarantee that



your battery gives you the performance you ...

[WhatsApp](#)



### **What is a Battery Management System? Complete Guide to BMS ...**

A Battery Management System (BMS) is an electronic control unit that monitors and manages rechargeable battery packs to ensure safe operation, optimal performance, and ...

[WhatsApp](#)



### **Understanding the Role of the BMS in Modern Lithium Batteries**

The Battery Management System is an electronic circuit board built into or attached to a lithium battery pack. Its primary function is to monitor, manage, and protect the battery cells during ...

[WhatsApp](#)



### **EV Battery Efficiency's Brain: Battery Management Systems**

What is a Battery Management System (BMS)?  
The Battery Management System (BMS) is an intelligent electronic system that monitors, controls, and protects battery packs in ...

[WhatsApp](#)



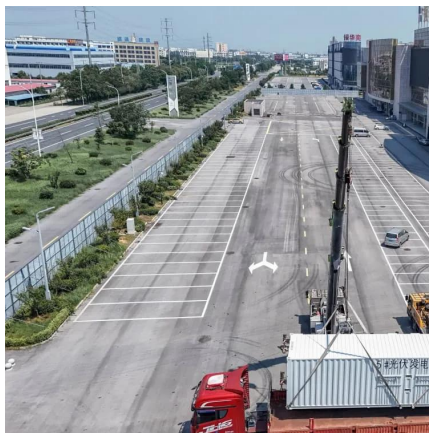




## BMS for Lithium Batteries: Understanding Their Role and ...

Lithium batteries have revolutionized the way we power our devices, from smartphones to electric vehicles. However, to ensure the safety, longevity, and efficiency of ...

[WhatsApp](#)



## What Is the Role of a Battery Management System (BMS) in Lithium ...

A Battery Management System (BMS) is essential for the safe and efficient operation of lithium-ion battery packs, particularly in applications such as electric vehicles and ...

[WhatsApp](#)

## Understanding Battery Management Systems (BMS) in Lithium ...

At its core, a BMS acts as a traffic light for the battery --controlling whether the battery can charge or discharge based on a set of critical parameters. Think of the BMS as a computerized ...

[WhatsApp](#)



## Why is BMS Important in Lithium Batteries? Understanding the ...

In the ever-evolving world of battery technology, Battery Management Systems (BMS) play a pivotal role in ensuring the safety, efficiency, and longevity of lithium-ion batteries.

[WhatsApp](#)



## What Is a Battery Management System? A Complete Guide for Lithium

This comprehensive guide explores what a BMS is, why it's essential, and how it ensures your lithium battery applications' optimal performance and safety. Do You Need a BMS for Lithium ...

[WhatsApp](#)



## The Role of BMS in Lithium Batteries: What You Need to Know

Lithium batteries are widely used today, powering everything from smartphones to electric vehicles. A crucial component that ensures their safety and efficiency is the Battery ...

[WhatsApp](#)

## Battery Management System: Components, Types and Objectives

Definition of a Battery Management System A battery management system (BMS) is a sophisticated control system that monitors and manages key parameters of a battery pack, ...

[WhatsApp](#)





### **Understanding BMS in Lithium Batteries: Importance and ...**

Conclusion In summary, a Battery Management System (BMS) is an integral component of lithium battery technology, ensuring their safe, efficient, and reliable operation. ...

[WhatsApp](#)

## **Contact Us**

---

For catalog requests, pricing, or partnerships, please visit:  
<https://www.straighta.co.za>