

BESS photovoltaic panels on the roof





Overview

Is there a guide to rooftop solar & Bess?

To help homeowners tackle this tangle of information, PNNL researchers Jessica Kerby and Bethel Tarekegne published an open-access guide to rooftop solar and BESS in Renewable Energy Focus.

What is a solar energy Bess system?

A Solar Energy BESS system combines solar panels, batteries, and other components to generate, store, and manage electricity. In simple terms, it captures solar energy when it is abundant, stores it in batteries, and provides a steady power supply whenever needed.

How much would a rooftop solar system cost without Bess?

Without BESS, the same household could install 10 kW of rooftop solar, which would cost \$28,700 and save \$1,567 per year. PGE and the state of Oregon both offer incentives for rooftop solar and battery energy storage. With the utility, state, and federal incentives, the combined solar and BESS system could be paid back within 11 years.

How do I install a Bess solar inverter?

Secure Mounting: The BESS must be securely installed on a flat surface or mounted on a wall to ensure stability. Wiring: Correctly wire the BESS system to the solar inverter to ensure seamless energy storage. Testing: After installation, it's crucial to test the system to confirm that it's storing energy efficiently.

What are the benefits of integrating solar energy with Bess?

Benefits of Solar Energy BESS A key benefit of integrating solar energy with BESS is the reduction in dependency on the electrical grid. Homeowners and businesses can rely on their stored energy during outages or high-demand periods, reducing energy costs and increasing energy independence.



What is a hybrid solar rooftop design?

Photovoltaic (PV) panels and a backup generator are combined in a hybrid solar rooftop design to produce a consistent and dependable electricity supply. Daytime electrical energy is supplied to the building by the PV systems panels, which transform solar energy into electricity.



BESS photovoltaic panels on the roof



A Consumer's Guide to Rooftop Solar and Home Energy Storage

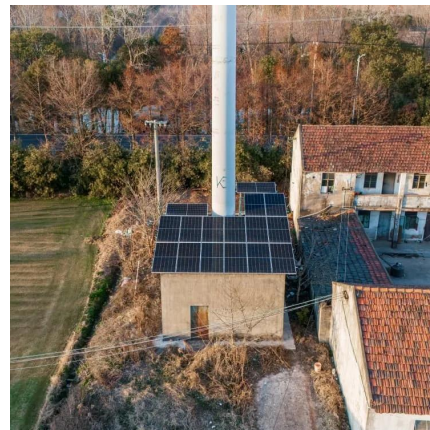
To help homeowners tackle this tangle of information, PNNL researchers Jessica Kerby and Bethel Tarekegne published an open-access guide to rooftop solar and BESS in ...

[WhatsApp](#)

[Low Voltage PV & BESS Design . Sol Donum](#)

Solar panels with a battery energy storage system (BESS) is a system that takes the energy harvested from the sun and stores it. Energy stored in the BESS/batteries is used when ...

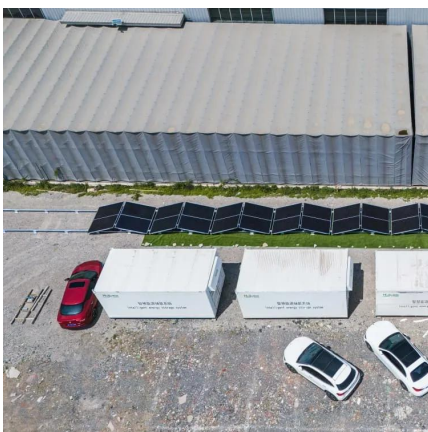
[WhatsApp](#)



IR N-3: Energy Code Requirements for Photovoltaic and ...

PURPOSE This Interpretation of Regulations (IR) clarifies Photovoltaic (PV) and Battery/Energy Storage Systems (BESS) requirements of project submittals to promote uniform statewide ...

[WhatsApp](#)



IR 16-8: Solar Photovoltaic and Thermal Systems Review ...

Building-Integrated Photovoltaic (BIPV) Roof Covering Systems As defined in International Code Council Evaluation Service (ICC-ES) AC365,



a BIPV roof panel is an integrated, manufactured ...

[WhatsApp](#)



HOW TO INSTALL SOLAR PANELS ON ROOF

Install photovoltaic solar panels on the roof . How to Install and Connect Solar Panels on a Roof - Step by Step. How To Install Solar Panels In 7 StepsStep 1: Calculate How Many Solar Panels ...

[WhatsApp](#)



Photovoltaic panels for roof tiles

Solar roof tiles, also known as photovoltaic (PV) tiles, are innovative solar energy solutions that combine the functionality of traditional roof tiles with the ability to generate electricity from ...

[WhatsApp](#)



[Photovoltaic solar panel roof installation](#)

Solar panel installation is the most visible and time-consuming part of a solar system, but there's more to the project than putting panels on the roof - there's also wiring and other equipment ...

[WhatsApp](#)

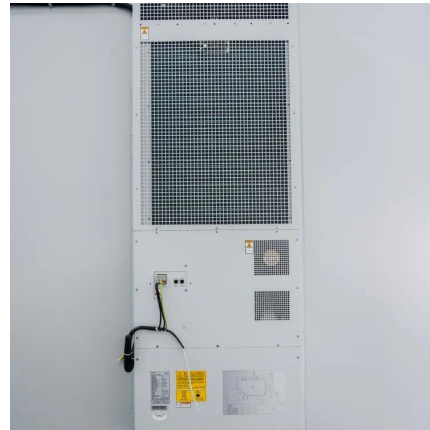




[Photovoltaic \(PV\) and Battery Energy Storage System...](#)

Must be clear of all obstructions, including panels, conduit, and service powerlines. A simple diagram of the panel layout on the roof must be affixed to the exterior disconnects. ...

[WhatsApp](#)



7 Powerful Steps on How to Install a BESS System Successfully

Understanding how to install a BESS system properly is essential for maximizing efficiency, ensuring safety, and achieving long-term energy independence. This guide will help you ...

[WhatsApp](#)

Solar Type Roof Design: A Comprehensive Guide for Sustainable ...

Understanding Solar Type Roof Design Solar type roof design refers to the integration of solar panels into the architecture of a building. This design not only maximizes ...

[WhatsApp](#)



Contact Us

For catalog requests, pricing, or partnerships, please visit:
<https://www.straighta.co.za>