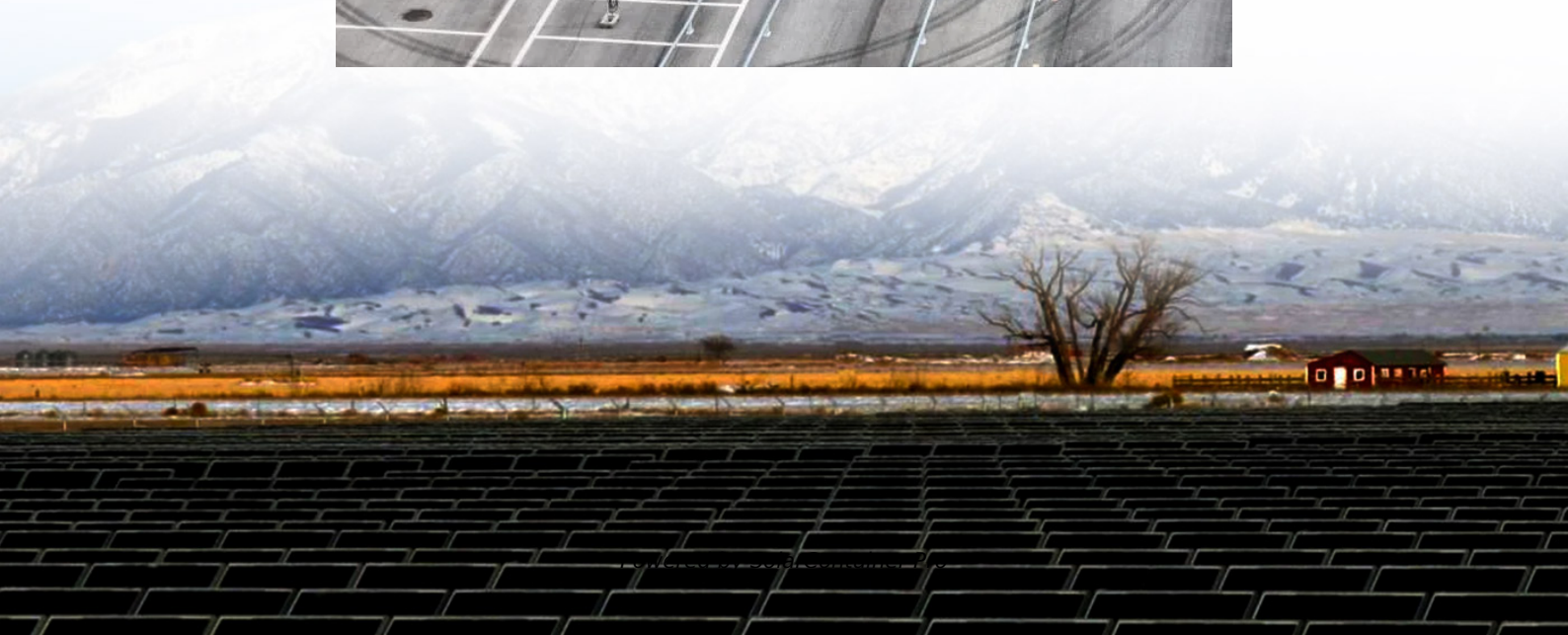
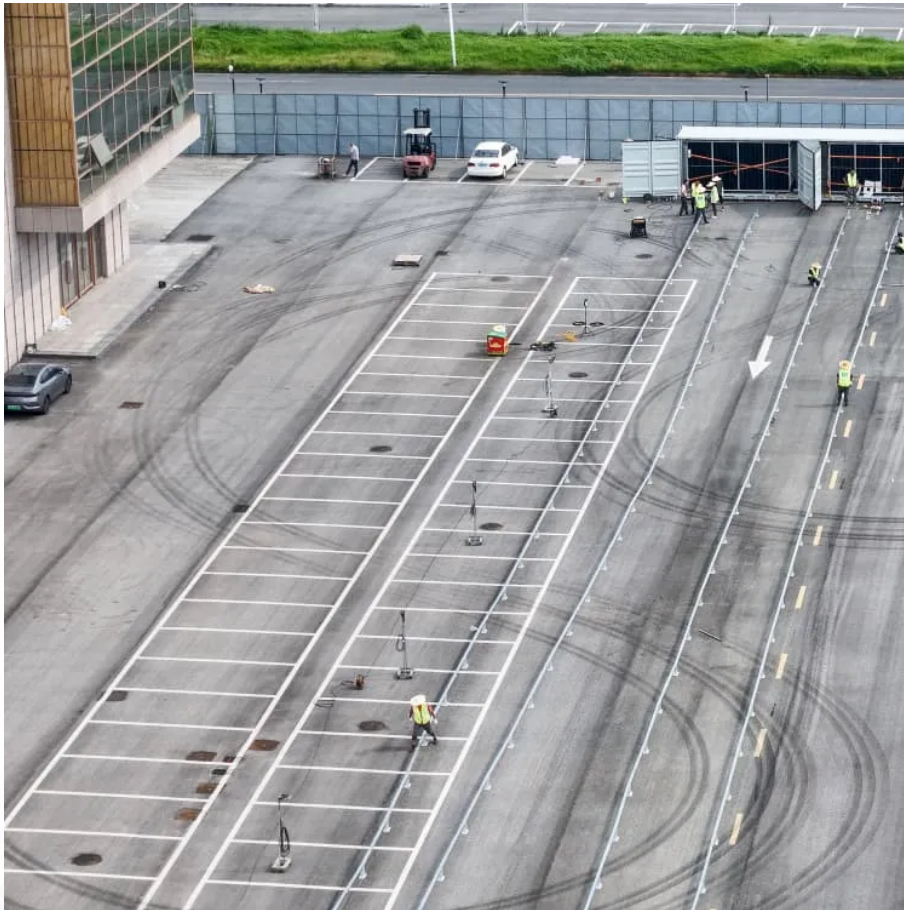


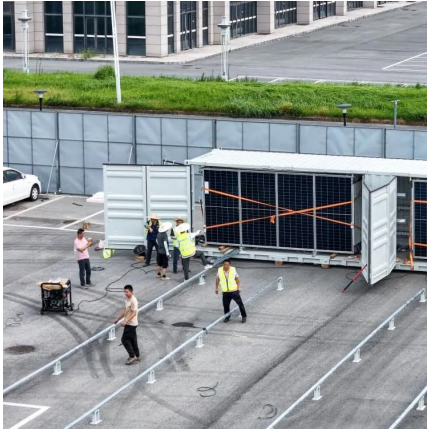
# **BASE TECHNOLOGY ROOM MIXED ENERGY COST**





## BASE TECHNOLOGY ROOM MIXED ENERGY COST

---



### [Base Power Will Install A Residential Storage Battery](#)

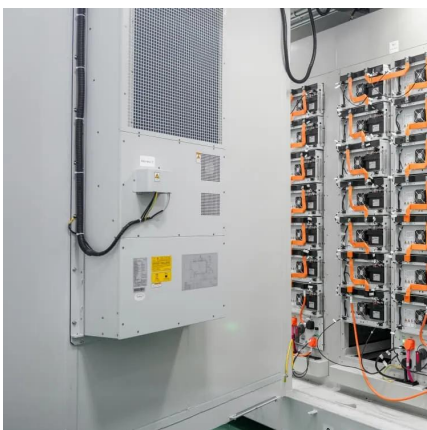
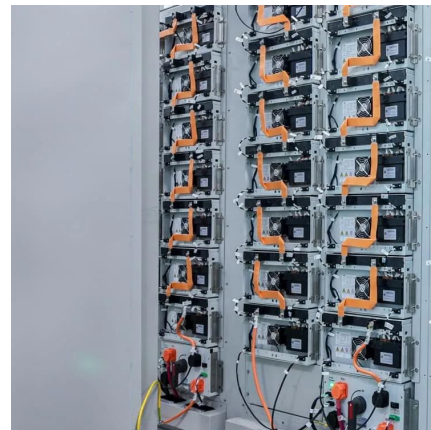
Base Power is currently buying much of its battery technology and the energy it delivers from suppliers while working on its own battery storage system that can be installed ...

[WhatsApp](#)

### [Electric Power System Asset Optimization](#)

Levels of Capital Costs As illustrated by Figure 1, this methodology defines capital cost at five levels: BEC, EPCC, TPC, TOC and TASC. BEC, EPCC, TPC and TOC are "overnight" costs ...

[WhatsApp](#)



### **Article Evaluating zero-energy strategies in mixed-use ...**

The building sector is responsible for over 40% of global energy consumption, necessitating innovative strategies to minimize energy usage in both commercial and residential buildings, ...

[WhatsApp](#)

### **Identifying Risks in the Energy Industrial Base: Supply Chain ...**

Acknowledgements The U.S. Department of Energy (DOE) acknowledges all stakeholders that contributed to the development of this report





including but not limited to individuals ...

[WhatsApp](#)



### **BESS Costs Analysis: Understanding the True Costs of Battery Energy**

On average, installation costs can account for 10-20% of the total expense. Unlike traditional generators, BESS generally requires less maintenance, but it's not maintenance ...

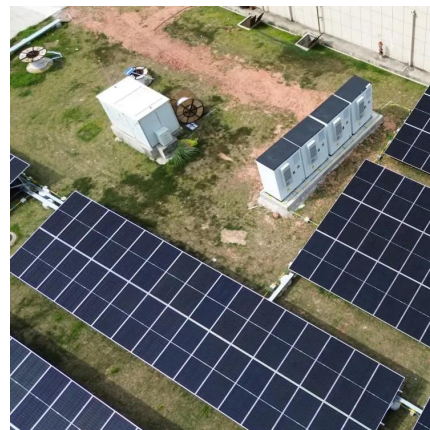
[WhatsApp](#)



### **BESS Costs Analysis: Understanding the True Costs of Battery ...**

On average, installation costs can account for 10-20% of the total expense. Unlike traditional generators, BESS generally requires less maintenance, but it's not maintenance ...

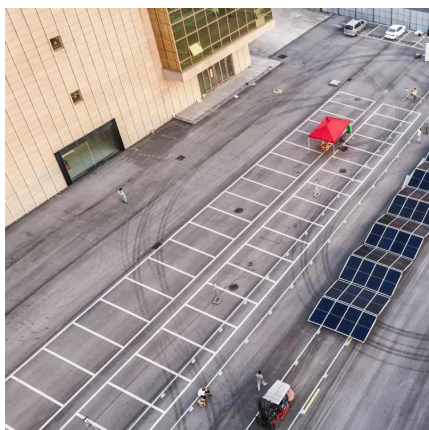
[WhatsApp](#)



### **[How much does energy storage base cost? .](#)** [NenPower](#)

Selecting an appropriate energy storage solution entails evaluating several factors that influence both performance and costs. First and foremost, capacity and discharge duration ...

[WhatsApp](#)

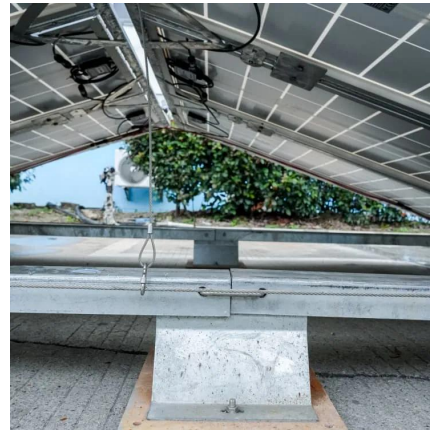




## What's the biggest difference between Base and other energy ...

How does grid-balancing work? When energy demand spikes, our batteries discharge energy back into the grid. In return, Base is compensated by grid operators for helping balance the ...

[WhatsApp](#)



## Base vs other Texas electricity providers (2025) , Base Power

Unlike other providers, Base does not charge high rates, base fees, or complicated pricing based on usage times. Additionally, members with solar panels can benefit from competitive credits ...

[WhatsApp](#)

## Mixed cost: The Hidden Gems: Leveraging Mixed Costs for ...

By leveraging the insights gained from dissecting mixed costs, companies can develop strategies to reduce the fixed cost burden or increase the efficiency of variable cost utilization, thereby ...

[WhatsApp](#)



## [How much does Base cost? How much do I pay for energy?](#)

To get started with Base, you pay a \$50 refundable deposit upfront. This deposit applies toward your one-time installation cost once your battery is installed, and is refundable until your home ...

[WhatsApp](#)



### Capital Cost and Performance Characteristics for Utility ...

To accurately reflect the changing cost of new electric power generators in the Annual Energy Outlook 2025 (AEO2025), EIA commissioned Sargent & Lundy (S&L) to evaluate the overnight ...

[WhatsApp](#)



### [Part I and II \(Building and Support Facilities\)](#)

Unit Costs in the PAX Newsletter Table are escalated to 1 Oct 2023, the assumed mid-point of construction for a typical FY 2023 MILCON project using Appendix-C, Military Construction ...

[WhatsApp](#)

### Utility-Scale Battery Storage , Electricity , 2024 , ATB , NREL

Base year costs for utility-scale battery energy storage systems (BESSs) are based on a bottom-up cost model using the data and methodology for utility-scale BESS in (Ramasamy et al., 2023).

[WhatsApp](#)







### **Utility-Scale Battery Storage , Electricity , 2024 , ATB , NREL**

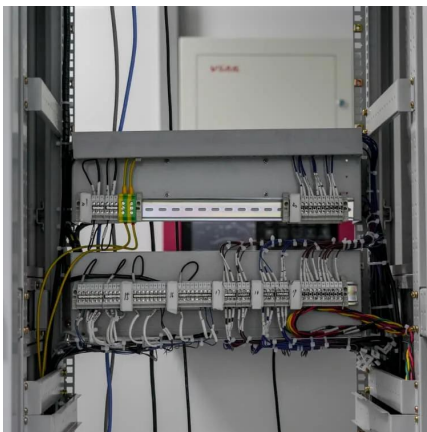
Using the detailed NREL cost models for LIB, we develop base year costs for a 60-megawatt (MW) BESS with storage durations of 2, 4, 6, 8, and 10 hours, (Cole and Karmakar, 2023).

[WhatsApp](#)

### **BESS Costs Analysis: Understanding the True Costs of Battery Energy**

Battery Energy Storage Systems (BESS) are becoming essential in the shift towards renewable energy, providing solutions for grid stability, energy management, and ...

[WhatsApp](#)



### **Mixed Technology Switchgear (MTS) Substations , SpringerLink**

Mixed technology switchgear (MTS) is a switchgear assembly of various high-voltage components introduced into the high-voltage market as a possible solution fitting ...

[WhatsApp](#)

### **[Base Power Will Install A Residential Storage Battery](#)**

Base Power is currently buying much of its battery technology and the energy it delivers from suppliers while working on its own battery storage system that can be installed ...

[WhatsApp](#)



### **Base Power Battery & Energy Plans and Pricing , Base Power**

Get a clear, no-surprises energy plan with Base Power. Guaranteed below-market electricity rates, no hidden fees--plus built-in home backup for ultimate reliability.

[WhatsApp](#)

## **Contact Us**

---

For catalog requests, pricing, or partnerships, please visit:  
<https://www.straightta.co.za>