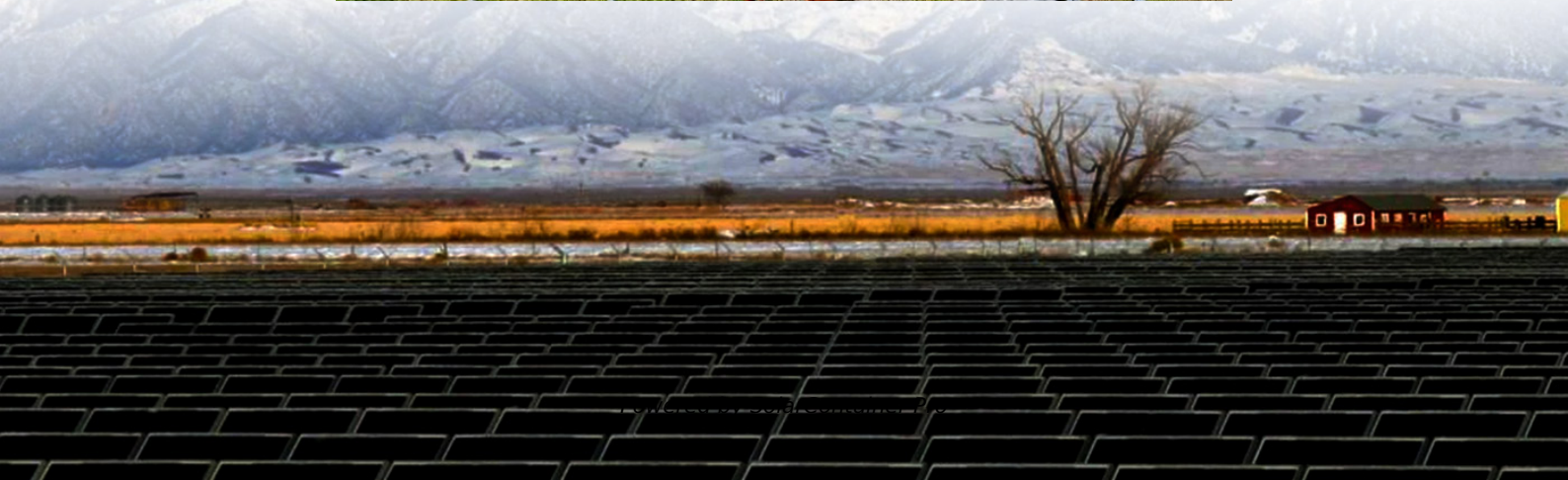


Are there any tariffs on the export of energy storage cabinets from Burkina Faso





Overview

What are the import tariffs in Burkina Faso?

The import tariffs in Burkina Faso can range dramatically depending on the product category. For example, essential goods such as food items may attract lower tariffs, while luxury items often face higher rates. Specifically, the tariff rates can be as low as zero percent for certain agricultural products to upwards of 30 percent for electronics.

How do duty rates affect the cost of imported goods in Burkina Faso?

Duty rates are a crucial aspect of international trade, directly impacting the cost of imported goods in Burkina Faso. The country employs a comprehensive tariff system that categorizes products into different classifications, each of which is subject to specific duty rates.

How does Burkina Faso regulate tariffs and duties?

In Burkina Faso, the regulation of tariffs and duties is a critical aspect of international trade policy, ensuring that the flow of goods is managed in accordance with national interests. Tariffs are taxes imposed on goods that are imported into or exported from the country.

What products are taxable in Burkina Faso?

(3) 10% tariff: yeast, soap-making oils, baking powder, buses, freight vehicles, pressure pipes, etc.; (4) 20% and above tariffs: various manufactured products and other commodities. The Burkina Faso Customs Management Regulations, under the Ministry of Finance, adhere to the 1992 Customs Law.

What are Burkina Faso customs regulations?

The Burkina Faso Customs Management Regulations, under the Ministry of Finance, adhere to the 1992 Customs Law. Since 2000, it applies the WAEMU common tariff with four import tax levels: 0% for essentials like medicines, 5% for raw materials & agricultural tools, 10% for select industrial inputs, and



20%+ for manufactured goods.

What happens if you misclassify goods in Burkina Faso?

Misclassifying goods could lead to significant penalties and delays in shipment clearance. The import tariffs in Burkina Faso can range dramatically depending on the product category. For example, essential goods such as food items may attract lower tariffs, while luxury items often face higher rates.



Are there any tariffs on the export of energy storage cabinets from



[United States tariffs on Burkina Faso , WITS data](#)

Below table has data from UNCTAD TRAINS for Most Favored Nation (MFN) tariff and Applied tariff applied by United States on imports from Burkina Faso. MFN and Applied Tariff are ...

[WhatsApp](#)

Navigating Customs Duties and Compliance Requirements in ...

This comprehensive guide explores the intricacies of customs duties in Burkina Faso, detailing their importance in international trade, duty rates, and applicable exemptions.

[WhatsApp](#)



Burkina Faso Imports, Tariffs by country and region 2021 , WITS ...

Merchandise Trade summary statistics for a country including imports, exports, tariffs, export and import partners, top exported products and development indicators

[WhatsApp](#)

Ship to BURKINA FASO :BURKINA FASO Tariffs and Customs ...

BURKINA FASO Tariffs and Value Added Tax Guide Tariffs refer to the taxes levied by BURKINA FASO on goods entering or leaving its



borders in accordance with local laws.
Regardless of ...

[WhatsApp](#)



Navigating Import and Export Regulations in Burkina Faso: A

This comprehensive guide covers crucial aspects of import and export regulations, customs procedures, tariffs, and prohibited goods, essential for traders operating in the region.

[WhatsApp](#)



Navigating Customs Duties and Compliance Requirements in Burkina Faso

This comprehensive guide explores the intricacies of customs duties in Burkina Faso, detailing their importance in international trade, duty rates, and applicable exemptions.

[WhatsApp](#)



[Burkina Faso tariffs on Burkina Faso , WITS data](#)

Below table has data from UNCTAD TRAINS for Most Favored Nation (MFN) tariff and Applied tariff applied by Burkina Faso on imports from Burkina Faso. MFN and Applied Tariff are ...

[WhatsApp](#)

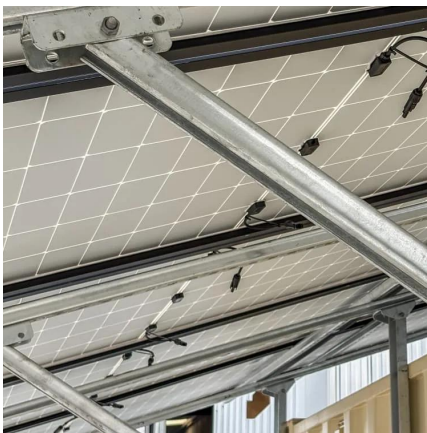




[Burkina Faso Customs Import and Export Policy](#)

Since 2000, it applies the WAEMU common tariff with four import tax levels: 0% for essentials like medicines, 5% for raw materials & agricultural tools, 10% for select industrial inputs, and 20%+ ...

[WhatsApp](#)



[BOST to tap into US\\$970m oil re-export market](#)

The Bulk Oil Storage and Transportation Company Limited (BOST) is positioning itself to take advantage of a GH¢970million oil re-export market in landlocked nations within ...

[WhatsApp](#)

Contact Us

For catalog requests, pricing, or partnerships, please visit:
<https://www.straighta.co.za>