

Are outdoor base stations legal





Overview

Can unauthorized people access a base station?

The antennas are installed in such a way that unauthorized people do not have access to the area where the limits may be exceeded. This holds true whether the base station is part of a 2G (GSM), a 3G, a 4G (LTE) or a 5G network.

Are base stations harmful?

This holds true whether the base station is part of a 2G (GSM), a 3G, a 4G (LTE) or a 5G network. The WHO states: "From all evidence accumulated so far, no adverse short- or long-term health effects have been shown to occur from the RF signals produced by base stations." (WHO fact sheet "Base stations and wireless technologies").

Do mobile phones need a base station?

Mobile phones and other mobile devices require a network of base stations in order to function. The base station antennas transmit and receive RF (radio frequency) signals, or radio waves, to and from mobile phones near the base station. Without these radio waves, mobile communications would not be possible.

Where should cell base stations be located?

An analysis of 100 studies published in Environmental Reviews found approximately 80% showed biological effects near towers. "As a general guideline, cell base stations should not be located less than 1500 ft from the population, and at a height of about 150 ft" (Levitt 2010).

Where is a base station antenna located?

The base station antennas are usually placed on rooftops, in masts or on building walls. Antennas are sometimes also installed in shopping malls, airports, offices, and other places with many mobile phone users. Indoor



antennas are usually placed on walls or on ceilings. Each base station can only serve a limited number of mobile devices at a time.

How much exposure can a radio base station have?

On the ground, in houses, and other places where people reside, the exposure levels from radio base stations are normally below 1 percent of the limits. Only in the close vicinity of the antennas can the exposure limits sometimes be exceeded.



Are outdoor base stations legal



[Legal Options For Temporary FM Station For An Event?](#)

In the past, I've messed around with some off the shelf legal transmitters, but I couldn't get the signal to propagate out to the gate road turn off, and part of the application of ...

[WhatsApp](#)

[U.S. LOCAL CELL TOWER AND WIRELESS FACILITY LAWS](#)

2018 multi-country study published in Environment International measured RF in several countries and found cell tower/base station radiation to be the dominant contributor to RF exposure in ...

[WhatsApp](#)



[Is It Possible to Use the Eufy Camera Without Homebase?](#)

What is the purpose of the Eufy HomeBase Station? The Eufy HomeBase Station is essentially the central processor of any Eufy system. There are several types of HomeBase ...

[WhatsApp](#)



[MultiTech Outdoor Base Station BS422-S and BS422-SP](#)

DAMM® MultiTech Outdoor Base Station BS422-S and BS422-SP The DAMM MultiTech Outdoor Base Station BS422 is a multi-carrier, multi-



technology outdoor base station. It comes in two ...

[WhatsApp](#)



[VistaMAX OBR3650HP Outdoor Base Station Transceiver](#)

To set up and configure the base station, you require the following:

- o One VistaMAX OBR3650HP base station with a stand-alone Power over Ethernet (PoE) or WES800 Ethernet Switch
- o One ...

[WhatsApp](#)



[Study of the correlation between outdoor and indoor ...](#)

The main objective of this assessment is to study the correlation between the outdoor and the indoor exposure produced by cellular base stations and to investigate the ...

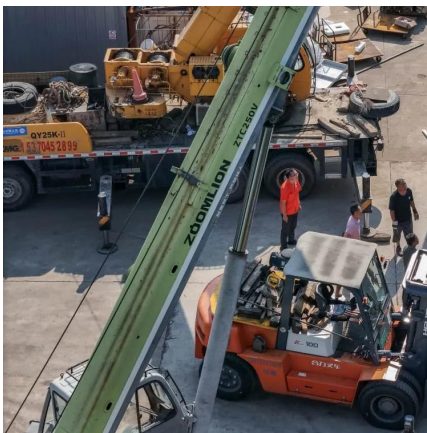
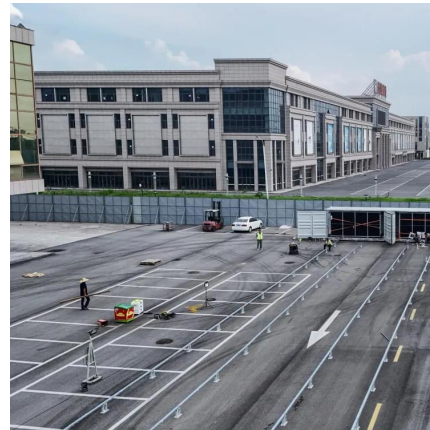
[WhatsApp](#)



Base station types: a solution for every deployment scenario

Transportable base stations Due to the characteristics of size and ability to operate in hostile environmental conditions that we have reviewed in outdoor base stations, ...

[WhatsApp](#)



The Role of Base Station Expert Witnesses in Legal Cases

Base stations are often located on leased properties or urban areas, leading to disputes over zoning regulations and property rights. Neighbors and community members may raise ...

[WhatsApp](#)

Legal Options For Temporary FM Station For An Event?

In the past, I've messed around with some off the shelf legal transmitters, but I couldn't get the signal to propagate out to the gate road turn off, and part of the application of the station would ...

[WhatsApp](#)



Contact Us

For catalog requests, pricing, or partnerships, please visit:
<https://www.straighta.co.za>