

Are lithium batteries and inverters compatible





Overview

Yes, you can connect an inverter to a lithium battery. Lithium batteries, particularly Lithium Iron Phosphate (LiFePO4) batteries, are well-suited for use with inverters due to their high efficiency, lightweight design, and ability to deliver consistent power. Are inverters compatible with lithium batteries?

Understanding the basics of inverters and different battery options sets the stage for exploring the compatibility between inverters and lithium batteries. Lithium batteries have revolutionized the world of inverters, offering a range of advantages that make them an ideal choice for powering these devices.

Which battery should I use for my inverter?

When it comes to powering your inverter, there are a few alternative options to consider aside from lithium batteries. While lithium batteries have gained popularity due to their numerous advantages, they may not be the right choice for everyone. One alternative option is lead-acid batteries.

Can a solar inverter be used with a lithium battery?

Integrating a solar inverter with a lithium battery can take your renewable energy setup to the next level. This combination allows for better energy storage, improved efficiency, and greater resilience during power outages. LiFePO4 batteries are particularly well-suited for solar applications because of their thermal stability and long cycle life.

What is a lithium ion battery for a home inverter?

Lithium-ion batteries offer a more consistent discharge rate, ensuring that your inverter operates smoothly and efficiently. A lithium-ion battery for a home inverter can significantly enhance your home's energy storage capabilities.

How do I install a lithium battery for inverter?

Understanding your inverter type is crucial to avoid potential issues down the



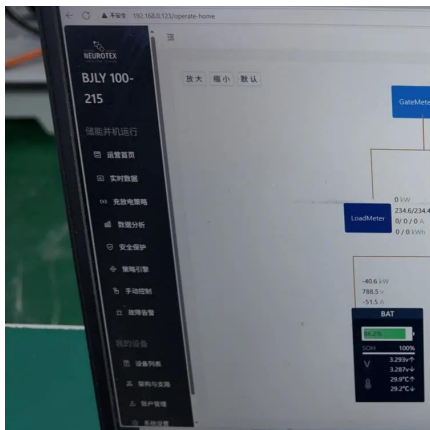
line. The first step in installing a lithium battery for inverter with an existing inverter is to assess your current setup. This includes evaluating the condition of your inverter and ensuring it meets the necessary specifications for lithium-ion batteries.

Can a lithium battery be used with a sine wave inverter?

Some examples include pure sine wave and modified sine wave inverters. These inverters may work better with lithium-ion batteries. Understanding your inverter type is crucial to avoid potential issues down the line. The first step in installing a lithium battery for inverter with an existing inverter is to assess your current setup.



Are lithium batteries and inverters compatible



Hybrid Inverter and Lithium Batteries: Setup Guide and Best ...

5. Software Updates and Firmware Compatibility
Both hybrid inverters and lithium batteries frequently receive firmware updates that can enhance functionality or fix bugs. It is important to ...

[WhatsApp](#)

Compatibility of Lithium-Ion Batteries with Existing Inverters

In summary, installing a lithium-ion battery with an existing inverter is not only feasible but also highly beneficial. From improved efficiency and performance to enhanced energy storage and ...

[WhatsApp](#)



Importance of Compatibility Between Inverter and Lithium Battery

Inverters that are not designed to work with lithium batteries may overcharge or undercharge the battery, leading to premature degradation. Ensuring compatibility means that ...

[WhatsApp](#)

How do I match a lithium solar battery with an inverter?

Some inverters are designed specifically for lithium batteries, while others can work with multiple battery types. When choosing an



inverter, make sure it is compatible with lithium batteries.

[WhatsApp](#)



How do I know if my current inverter is compatible with new batteries

Check the inverter's manual or contact the manufacturer to confirm compatibility with specific battery models. Some brands like Victron provide specifications and guidelines for ...

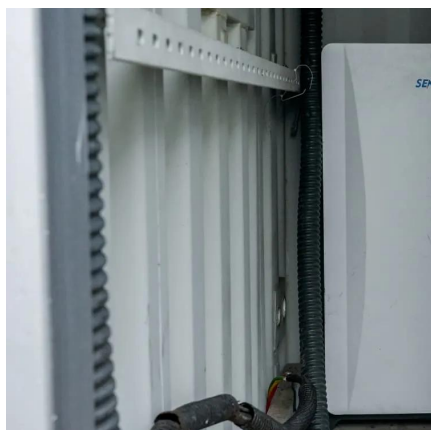
[WhatsApp](#)



Maximizing Solar Efficiency: GSL ENERGY Lithium Battery Compatibility

That's why we've designed our lithium batteries to be compatible with nearly every major inverter brand on the market. Whether you're deploying a 10kWh home battery wall or ...

[WhatsApp](#)



[Do Lithium Batteries Need a Special Inverter?](#)

Lithium batteries, including lithium-ion batteries and lithium iron phosphate (LiFePO4) batteries, don't necessarily require a special inverter specifically designed for lithium batteries.

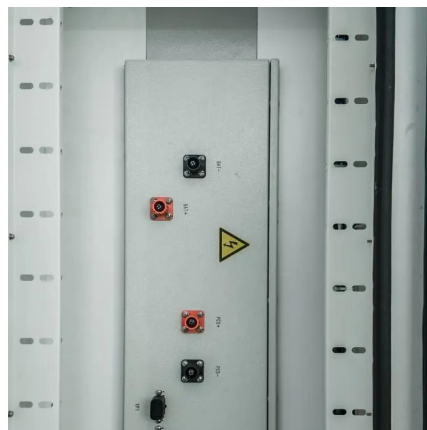
[WhatsApp](#)



[Top 10 Batteries Compatible with Deye Inverter](#)

When selecting a compatible battery for your Deye inverter, it's crucial to choose one that offers high performance, flexibility, and longevity. Below are the top 10 batteries that work seamlessly ...

[WhatsApp](#)



Understanding the Basics of Connecting Lithium Batteries to Inverters

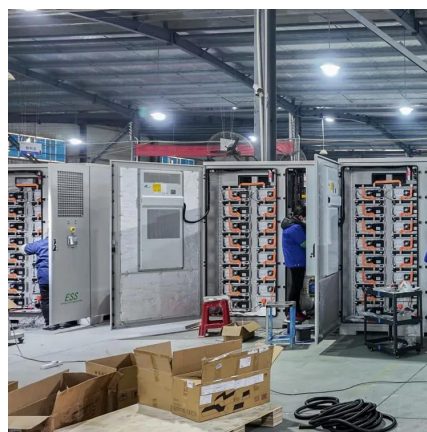
Connecting a lithium battery to an inverter is crucial for converting the stored DC (Direct Current) energy into usable AC (Alternating Current) for household or industrial ...

[WhatsApp](#)

[Can Lithium Batteries Work With Any Type of Inverter?](#)

When setting up solar energy systems or home energy storage, a common question arises: Are lithium batteries compatible with all inverters? The short answer is no - proper ...

[WhatsApp](#)



[Can I Connect Inverter to Lithium Battery?](#)

Yes, you can connect an inverter to a lithium battery. Lithium batteries, particularly Lithium Iron Phosphate (LiFePO4) batteries, are well-suited for use with inverters due to their ...

[WhatsApp](#)



Compatibility Analysis Between Lithium Batteries and Inverters

Ensuring compatibility between lithium batteries and inverters involves multi-dimensional coordination across electrical parameters, communication, and environmental ...

[WhatsApp](#)



Contact Us

For catalog requests, pricing, or partnerships, please visit:
<https://www.straighta.co.za>