

# **Are Japanese communication base stations shared**





## Overview

---

Does Sumitomo have space for joint-use base stations in Japan?

Sumitomo Corp. believes there is significant room for growth in the market for joint-use base stations in Japan. TOKYO -- Sumitomo Corp. will begin setting up mobile phone base stations to be shared by the four major telecommunications companies -- NTT Docomo, KDDI, SoftBank and Rakuten Mobile -- in Japan, Nikkei has learned.

Why is Japan deploying a new 5G antenna?

Due to a lack of installation spots and the high cost of rolling out 5G networks, carriers in Japan have been sharing mobile infrastructure. Last month the Tokyo-based communications company JTower announced the deployment of the new glass antenna, created in part by glassmaker AGC (one of the world's largest) and the mobile carrier NTT Docomo.

What is a base station?

A base-station is more than just an antenna, and also includes the active electronics feeding the antenna. Buildings may still require rooms with electronics to generate the signal that ends up out at the antenna (although a small cell fed system might reduce room size/qty). This antenna allows flexible placement "remote" of the "base station."

When will Osaka-Kansai base stations be available?

Starting with the Osaka-Kansai Expo in 2025, the company plans a nationwide rollout of base stations compatible with the frequencies used by each telecommunications company.

Does 5G require more base stations?

Since 5G began its rollout in 2018 or 2019, fifth-generation wireless networks have spread across the globe to cover hundreds of millions of users. But while it offers lower latency than precursor networks, 5G also requires more base



stations.



## Are Japanese communication base stations shared

---



### Section 5 Trends related to ICT equipment and devices in ...

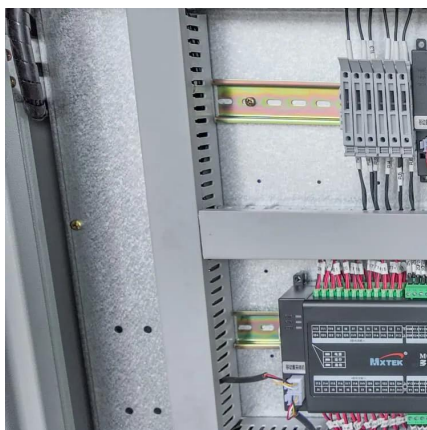
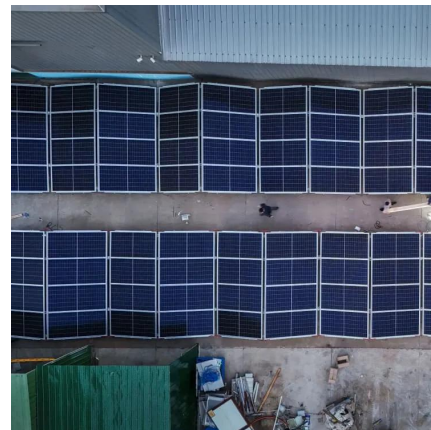
In Japan, the number of XR (Virtual Reality (VR), Augmented Reality (AR), Mixed Reality (MR)) and 360° video-compatible head-mounted display (HMD) units shipped in Japan was 720,000 ...

[WhatsApp](#)

### Number of base stations for Docomo, KDDI, Softbank, and ...

We have organized the number of base stations in operation for each radio band and communication method (5G NR, 4G LTE, 3G) for each mobile communication carrier in ...

[WhatsApp](#)



### Sumitomo to Spearhead Shared Mobile Base Stations for Japan's ...

In a strategic move set to transform Japan's telecommunications landscape, Sumitomo Corp. is embarking on a nationwide deployment of shared mobile base stations.

[WhatsApp](#)

### Japan's first proof of concept of 5G base station sharing in a ...

In this PoC, Osaka Metro and Sumitomo Corporation will be installing 5G base stations in the railway tunnel between Namba Station and



Shinsaibashi Station on the Midosuji ...

[WhatsApp](#)



### Base station sharing gets good reception among mobile carriers

The huge capital investment involved in rolling out the fifth-generation communication standard has prompted Japan's four major mobile carriers to share the base ...

[WhatsApp](#)



### Sumitomo to set up base stations to be shared by mobile carriers

TOKYO -- Sumitomo Corp. will begin setting up mobile phone base stations to be shared by the four major telecommunications companies -- NTT Docomo, KDDI, SoftBank and ...

[WhatsApp](#)



### [Japan's Telecommunications Carriers Join Forces to](#)

SoftBank Corp. and Rakuten Mobile have now joined this initiative and will be able to set up their base stations on ships owned by the NTT Group and KDDI Corporation. This ...

[WhatsApp](#)







### **ken-system: Requierements for sharing type 4G/5G base station**

Also new requirements for IoT communications (massive machine type communications) will be added to base-stations. In this talk, the requirements for sharing type ...

[WhatsApp](#)



## **Contact Us**

---

For catalog requests, pricing, or partnerships, please visit:  
<https://www.straighta.co.za>