

Advantages of Swaziland PV container substation





Overview

What are the advantages of container substation?

A significant advantage of container substation is their compact design. This type of substation is usually designed as one or more standardized boxes, which not only occupies a small area, but also can be flexibly laid out as needed.

What drives RWW development of containerised outdoor substations?

Customers requiring shorter overall delivery times and minimal on-site work have been the main drivers for RWW development of containerised outdoor substations.

What is a prefabricated compact substation?

Prefabricated compact substation are usually equipped with noise control devices and leak-proof devices to reduce the impact on the surrounding environment. Its enclosed structure effectively isolates the noise and odor inside the substation, thereby reducing interference with residents and the environment.

What is a containerised substation?

Purpose made substations, housing erected, tested and commissioned indoor distribution switchgear in one complete package. RWW's containerised substations are designed, manufactured, fully assembled, wired and operationally tested in our workshops, therefore site works are minimised along with delays due to inclement weather.

What is the difference between a substation and a traditional substation?

In contrast, traditional substations usually require a larger site to accommodate transformers, switchgear and other ancillary facilities. The compact design of substations makes them particularly suitable for urbanized areas and places with limited space, such as residential areas, commercial



areas and industrial parks.

What is a custom built containerised solution?

Discuss your requirements with our experts today. Custom built containerised solutions, available for purchase or long-term hire, are designed and built to your specification using any combination of new or refurbished transformers, switchgear and ancillary equipment to meet your exact requirements.



Advantages of Swaziland PV container substation



Advantages of Modular Electrical Substation, Design of Modular

In oil and gas industry, the demand of modular units are increasing as it can be a unique solution for customization. A modular substation solution is traditionally an electrical power distribution ...

[WhatsApp](#)

What is a Containerised substation?

In summary, container substations play a unique role in multiple power supply fields with their flexibility, convenience and reliability. However, due to their relatively single functions, they are ...

[WhatsApp](#)



Application Advantages, Classification And Operation Of Container

Compared with conventional substations of the same scale, container substations reduce investment by 40%-50%. Due to the selection of advanced equipment, especially the ...

[WhatsApp](#)

Application of Prefabricated Substation Enclosures in Utility-Scale PV

Application of Prefabricated Substation Enclosures in Utility-Scale PV Plants at High Altitudes. Systematically learning this knowledge



can help you work better in 2025.

[WhatsApp](#)



Elecod 500kW/1075kWh container BESS for peak shaving in Swaziland

By stores photovoltaic power in batteries directly and discharges it to the load at night, It has pretty of advantages in solving the consumption problem, including smoothing the load for ...

[WhatsApp](#)



Advantages of Container Type Substation?_Huaquan Power

Container Type Substation is a modern and efficient solution for power distribution, offering numerous benefits in terms of flexibility, safety, and cost-effectiveness. These compact and ...

[WhatsApp](#)



Advantages Of Container Substation Oem & Manufacturing

Advantages Of Container Substation Oem & Manufacturing - Replacing fossil fuel burners with Haiqi's proprietary biomass clean renewable energy, recovering valuable by-products (eg: ...

[WhatsApp](#)

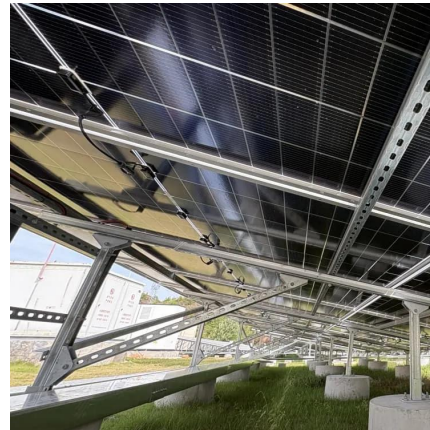




Sigcineni Solar: An off-grid solar and battery solution in Eswatini

It has evolved to supply power to 22 dispersed rural households via its reticulation network. The project also uses smart metering infrastructure to remotely monitor the plant and ...

[WhatsApp](#)



Elecod 500kW/1075kWh container BESS for peak shaving in ...

By stores photovoltaic power in batteries directly and discharges it to the load at night, It has pretty of advantages in solving the consumption problem, including smoothing the load for ...

[WhatsApp](#)

Advantages of box-type substations compared to traditional

Its enclosed structure effectively isolates the noise and odor inside the substation, thereby reducing interference with residents and the environment. Traditional substations may ...

[WhatsApp](#)



[Advantages of Container Type Substation?_Huaquan Power](#)

In conclusion, Container Type Substation provides a ?versatile, secure, and efficient? solution for modern power distribution. Its advantages in mobility, space-saving design, safety, and ...

[WhatsApp](#)



[Step up transformer substations for photovoltaic \(PV\)](#)

Our modular pad mounted (metal-clad) substations convert low-voltage AC power generated by the PV inverter into medium-voltage AC power and feed it into the power grid. A Brunstock ...

[WhatsApp](#)



[Swaziland Packaged Substation Market \(2025-2031\) , Size](#)

Packaged Substation Market: Eswatini vs Top 5 Major Economies in 2027 (Africa) Eswatini's Packaged Substation market is anticipated to experience a stable growth rate of 3.17% by ...

[WhatsApp](#)

Contact Us

For catalog requests, pricing, or partnerships, please visit:
<https://www.straightta.co.za>