

# **Adaptive temperature control battery cabinet installation**





## Overview

---

Where can a battery cabinet be installed?

Ranging in 300 to 400mm deep they are suitable for installation in walkways, sides of buildings, alongside industrial equipment and areas with limited space. The cabinets come pre-wired with all interconnecting battery cables and a DC busbar for easy indoor or outdoor installation of our batteries.

How do you put batteries in a cabinet?

Using a 2 person lift, insert batteries into cabinet standing them up vertically with battery terminals facing upwards. Securely fasten batteries in places using provided clamp bar and nuts. Connect corresponding Amphenol cables to batteries.

How do I connect a battery to a PCE?

Connect corresponding Amphenol cables to batteries. PCE main cables or System main DC isolator can be connected to the main 250Amp (adjustable) integrated cabinet isolator. Note: Batteries should be loaded from the rear of the cabinet working your way to the front.

How do I install a battery in a Pew enclosure?

Ensure all filings from forming holes are removed from cabinet. Connect main DC cable from main System (PCE) DC isolator to the PEW enclosure DC busbar with M8 nut, washer and locking washer and tighten. Using a 2 person lift, insert batteries into cabinet standing them up vertically with battery terminals facing upwards.

How many P series batteries can be installed in a cabinet?

DC isolator, main DC busbar and all interconnecting battery cables are provided and should be installed to suit your layout inside the cabinet. Up to 6 P Series batteries can be installed on the lower shelf, and an additional 6 P series batteries on the upper shelf.



How do you put batteries in a busbar?

Batteries can be slid into place on their side with their battery terminals face outwards. Using appropriate equipment or at least 2 people, lift and slide the batteries into the cabinet starting from the bottom shelf. Secure the busbar assembly back into place. Connect corresponding Amphenol cables to batteries.



## Adaptive temperature control battery cabinet installation

---



### Eaton Samsung Gen 3 Battery Cabinet Installation and ...

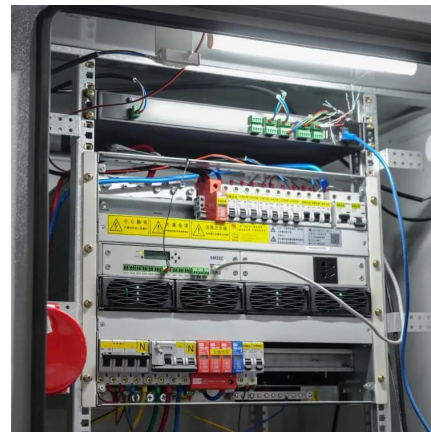
This manual describes how to install the Eaton Samsung Gen 3 battery cabinet and is divided into chapters. Read and understand the procedures described to ensure trouble-free installation ...

[WhatsApp](#)

### [Vertiv Liebert® APM2 Modular EBC User Manual](#)

Save these instructions This manual contains important instructions that should be followed during installation of Vertiv™ Liebert® APM2 Modular External Battery Cabinet (EBC) and ...

[WhatsApp](#)



### Adaptive Optimization Control Strategy for Electric Vehicle Battery

Excessive temperature affects battery aging and stability, causing a significant impact on the economy and safety of electric vehicles (EVs). The battery thermal management (BTM) ...

[WhatsApp](#)



### [Safety Considerations for Battery Cabinet Installation](#)

As the use of battery storage systems continues to rise, ensuring safe battery cabinet installation has become more important than ever. Batteries,





while highly useful for ...

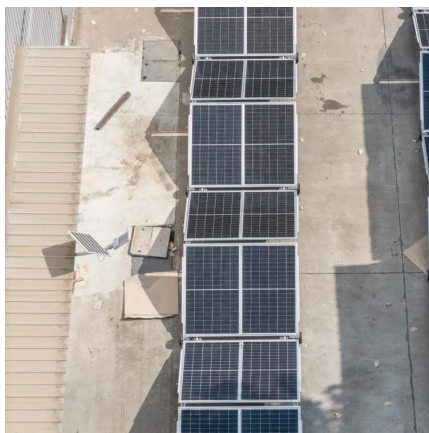
[WhatsApp](#)



[Performance analysis of a temperature adaptive anti...](#)

Download Citation , On May 1, 2023, Lei Zhao and others published Performance analysis of a temperature adaptive anti-condensation device in open-plan control cabinets , Find, read and ...

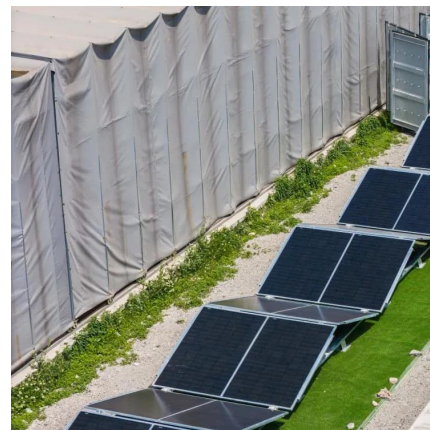
[WhatsApp](#)



### Key Considerations for Installing a Lithium Battery Cabinet

Before you can reap the benefits of these advanced systems, it's essential to consider several key factors related to the installation site. The first consideration is the physical space available for ...

[WhatsApp](#)



### Adaptive temperature control battery cabinet installation

We present a novel approach for a battery management system in which adaptive thermal control is employed to balance the capacities of individual groups of cells within a lithium-ion battery ...

[WhatsApp](#)





## **Adaptive Frequency™ Drive with Tracer® AdaptiView™ or ...**

Adaptive Frequency™ Drive with Tracer® AdaptiView™ or Symbio™ Control Air-Cooled Modbus™ Model AFDL (Remote Mounted) Model VFDA (Unit Mounted) Models: AFDL, VFDA

[WhatsApp](#)



## **BC58 Battery Cabinet Installation, Operation, & Maintenance ...**

The option provides functional access to the equipment circuit breaker via a handle located on the exterior of a cabinet door that is physically connected to the circuit breaker in the cabinet's ...

[WhatsApp](#)

## **Liebert® EXS External Battery Cabinet Installer/User Guide**

This manual contains important instructions that should be followed during installation of your Vertiv™ Liebert® EXS Battery Cabinet and accessories. Read this manual thoroughly, paying ...

[WhatsApp](#)



## **Battery Compartment Temperature Control Solution**

It is recommended to use semiconductor refrigerators for temperature control equipment, which are reliable in operation and require less maintenance, or DC air conditioners dedicated to ...

[WhatsApp](#)



## Contact Us

---

For catalog requests, pricing, or partnerships, please visit:  
<https://www.straighta.co.za>