

# **Actual power per square meter of photovoltaic panels**





## Overview

---

What is solar panel watts per square meter (W/M)?

Solar panel watts per square meter (W/m) measures the power output of a solar panel based on its size. Compare solar panels to see which generates most electricity per square meter. A higher W/m value means a solar panel produces more power from a given area. This can help you determine how many solar panels you need for your energy needs.

How do you calculate solar panel output in watts per square meter?

The formula to calculate the solar panel output and how much energy solar panels produce (in watts) using watts per square meter is as follows: Solar Panel Output (W) = Watts per Square Meter (W/m<sup>2</sup>) × Area of Solar Panel (m<sup>2</sup>).

What is a solar power per square meter calculator?

It also includes wiring, inverter, charge controller, and battery bank (if used). A solar power per square meter calculator takes details regarding these factors and then gives the accurate output generated by the solar panel per square meter. After this, it's time to learn about solar panel output calculators.

How much energy does a square meter of solar panels generate?

On a clear day with high solar irradiance, a square meter of efficient solar panels can generate around 150-250 watt-hours (Wh) of energy in an hour. It translates to approximately 1.5-2.5 kWh per day. Remember that this is a rough estimate and can vary based on factors such as panel efficiency, geographic location, and weather conditions.

How many Watts Does a solar panel use?

Here, the amount of the force of the electricity is represented by volts. The aggregate amount of energy used is expressed in amps (amperes). Output



ratings on most solar panels range between 250 watts to 400 watts. 1.  
Number of Solar Cells The most common categorization of solar cells is in  
60-cell solar panels and 72-cell solar panels.

How do you measure solar panel efficiency?

To measure this efficiency, use solar panel Watts per square meter (W/m).  
This metric shows how much power a solar panel produces per square meter  
of surface area under standard conditions. By knowing W/m, you can: Install  
solar panels and maximize your energy output! What is Solar Panel Efficiency?



## Actual power per square meter of photovoltaic panels

---



### How Much Electricity Can 1 Square Meter of Solar Panels ...

For 1m<sup>2</sup> of modern photovoltaic panels, you're looking at a daily output ranging from 0.3 kWh to 1.5 kWh. But why such a wide range? Stick with me - this solar story has more twists than a ...

[WhatsApp](#)

### [Determining Power Output of Photovoltaic \(PV\) Panels](#)

Photovoltaic panels are rated by their theoretical power output in watts. Theoretically, a square meter of sunlight generates 1,000 watts of energy. Due to the inefficiency of current PV solar ...

[WhatsApp](#)



### Solar Energy Per Square Meter: How Much Power Can You Get?

This article explores solar energy per square meter and the various factors that influence energy output, such as location, climate, and panel efficiency. It provides crucial ...

[WhatsApp](#)



### [Watts Per Square Meter Solar Panel - The Go-to Guide](#)

Watts per square meter (W/m<sup>2</sup>) is the power density of sunlight falling on a given area of solar panels. In the context of solar panels, it refers to



the amount of electrical power a ...

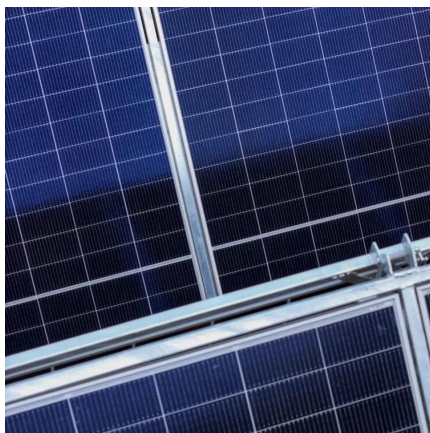
[WhatsApp](#)



### [A Complete Guide To Solar Panel Output](#)

What is the solar panel output? All solar panels are rated by the amount of DC (direct current) power they produce under standard test conditions. Solar panel output is expressed in units of ...

[WhatsApp](#)



### **A Guide to solar panel ratings**

This includes the panel's temperature of 25°C (77°F), light intensity of 1,000 watts per square meter (1,000 Wm<sup>2</sup>), which is basically the sun's position at noon, and the atmospheric density ...

[WhatsApp](#)



### **Actual power generation of photovoltaic panels per square ...**

Solar panel watts per square meter (W/m) measures the power output of a solar panel based on its size. Compare solar panels to see which generates most electricity per square meter.

[WhatsApp](#)





### [Solar Photovoltaic System Cost Benchmarks](#)

Unlike most PV cost studies that report values solely in dollars per watt, SETO's PV system cost benchmark reports values using intrinsic units for each component. For example, the cost of a ...

[WhatsApp](#)



### [How To Calculate Solar Panel Output? - Glyde Solar](#)

The amount of electricity that the solar panel produces under perfect conditions (known as peak sun), also known as "rated capacity" or 'rated output,' is 1,000 watts (or 1 kW) of sunshine per ...

[WhatsApp](#)

### **Solar Panel Output per Square Meter: Efficiency Factors & Future ...**

Solar panels have become a cornerstone of renewable energy, but many wonder: How much power can a single square meter of solar panels actually produce? Let's break down the ...

[WhatsApp](#)



## **Contact Us**

---

For catalog requests, pricing, or partnerships, please visit:  
<https://www.straightta.co.za>