

## **A few kilowatts of solar integrated machine**





## Overview

---

Solar integrated machines can typically install between 300 watts to 10 kilowatts of electricity, depending on various factors such as design and intended application, efficiency ratings, and geographic location, with larger systems and optimized setups capable of generating significantly more energy. How much power does a kilowatt solar system generate?

In kilowatt-sized installations the DC side system voltage is as high as permitted (typically 1000 V except US residential 600 V) to limit ohmic losses. Most modules (60 or 72 crystalline silicon cells) generate 160 W to 300 W at 36 volts. It is sometimes necessary or desirable to connect the modules partially in parallel rather than all in series.

What appliances can a 3KW Solar System run?

Let's see what appliances a 3kW solar system can run: Lights: A 3kW solar system can efficiently power all the lights in an average American home. This includes LED and CFL bulbs in various rooms. Let's say you have 10 LED bulbs, each using 10 watts. In total, that's 100 watts (0.1 kW).

How many megawatts does a photovoltaic power station produce?

Some large photovoltaic power stations such as Solar Star, Waldpolenz Solar Park and Topaz Solar Farm cover tens or hundreds of hectares and have power outputs up to hundreds of megawatts. A small PV system is capable of providing enough AC electricity to power a single home, or an isolated device in the form of AC or DC electric.

How much energy does a 3KW Solar System use?

Lights: A 3kW solar system can efficiently power all the lights in an average American home. This includes LED and CFL bulbs in various rooms. Let's say you have 10 LED bulbs, each using 10 watts. In total, that's 100 watts (0.1 kW). If you use them for 5 hours a day, it would be  $0.1 \text{ kW} \times 5 \text{ hours} = 0.5 \text{ kWh}$  per day.



### What can a 2KW Solar System power?

A 2kW solar system is suitable for powering basic household lighting, small appliances, and electronics (refrigerator, fans, TV and phone charger). It's best for small homes, cabins, or as a supplemental source of power. A 4kW system can handle standard household appliances like refrigerator, microwave, lights, fans, computer and TV.

### Is a 20kW Solar System right for You?

A 20kW solar system is well-suited for larger residential properties, generating more power than the average American home uses. However, it becomes especially practical if you rely on all-electric appliances or reside in a hot climate where continuous air conditioning is necessary.



## A few kilowatts of solar integrated machine

---



### [The Complete Off Grid Solar System Sizing Calculator](#)

Using your daily energy usage and Peak Sun Hours, and assuming a system efficiency of 70%, the calculator estimates the Wattage required for your off-grid solar system's ...

[WhatsApp](#)

### [3KW 5KW 11KW Solar Integrated Energy Storage Machine](#)

The 3KW, 5KW, and 11KW Solar Integrated Energy Storage Machines combine solar power generation, energy storage, and smart management into a single, efficient unit for both ...

[WhatsApp](#)



### **Hybrid Solar Control Inverter Integrated Machine 3kw 5kw 6.2kW**

Hybrid Solar Inverter For Home Energy Storage System. Grid-Tied and Off-Grid Operation: Supports both grid-connected and off-grid systems, offering flexibility for homeowners to store ...

[WhatsApp](#)

### **How many watts does the solar energy storage and control integrated**

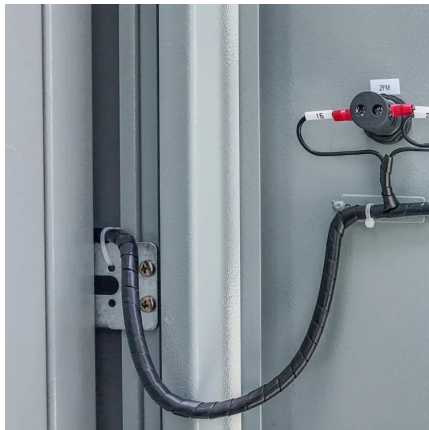
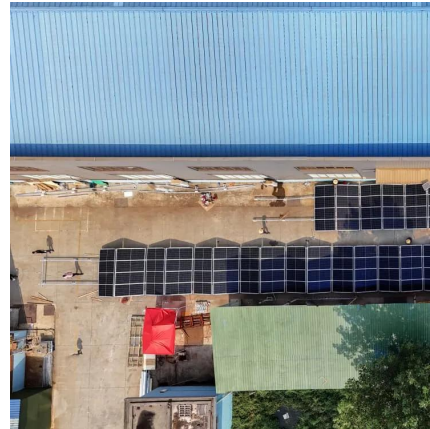
Solar energy storage and control integrated machines present a promising future in sustainable energy. The wattage variance in





these systems can be influenced by numerous ...

[WhatsApp](#)



### How many watts does the solar energy storage and control ...

Solar energy storage and control integrated machines present a promising future in sustainable energy. The wattage variance in these systems can be influenced by numerous ...

[WhatsApp](#)

### How much electricity can a solar integrated machine install

For example, a 5-kilowatt (kW) solar integrated machine may consist of 20 panels, each producing 250 watts under optimal conditions. This cumulative output could adequately ...

[WhatsApp](#)



### Solar Power Generation in Smart Cities Using an Integrated Machine

They must also find innovative ways to manage energy, raise living standards, and protect the environment while doing so [4]. Solar cookers, solar collectors, solar water heaters ...

[WhatsApp](#)



## How many watts does the solar energy storage and control integrated

1. The wattage of solar energy storage and control integrated machines varies significantly based on several factors, including design, capacity, and intended application.2. ...

[WhatsApp](#)



## [Guidance for domestic and small commercial consumers](#)

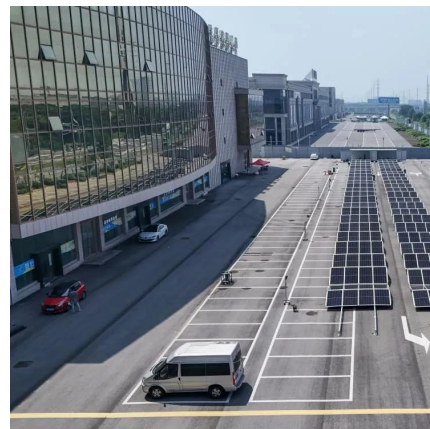
In this case, your 'self-consumption' of the solar PV electricity is already high. And your 'load profile' - when you use electricity and how much you use - means you won't have much (or ...

[WhatsApp](#)

## [Solar Control Inverter Integrated Machine 3.6kW](#)

The off grid hybrid solar inverter are designed with high efficiency to ensure maximum power generation from your solar panels. The easy-to-use interface of our solar inverters makes them ...

[WhatsApp](#)



## Contact Us

For catalog requests, pricing, or partnerships, please visit:  
<https://www.straightta.co.za>