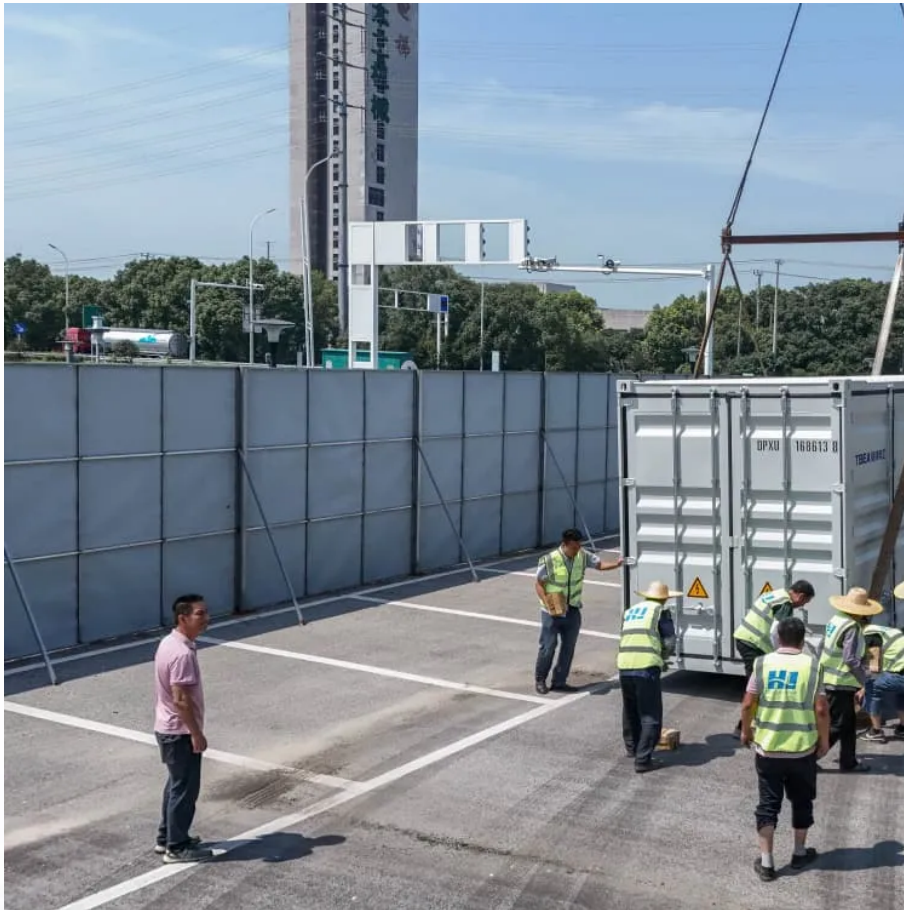


9v battery connected to inverter





Overview

A 12 volt inverter requires an input voltage between 11 and 14 volts, similar to a car battery. A 9 volt battery does not meet this requirement. This low voltage may prevent the inverter from providing the necessary output voltage. Do inverters and batteries need to match?

The inverter and batteries must match in terms of voltage, capacity, and power output. If you are using a 12V battery, then the input voltage of the inverter must match the battery voltage. If the specifications of the battery and the inverter do not match, the system will not operate stably and may even damage the equipment.

How many volts can a 9v battery supply?

You can step it up to 120 V, but it will deliver microamps. 9V batteries have a high internal resistance so they can't supply much current. You would also need a really large step-up transformer and an inverter as you can't power a transformer with just DC.

Can a 12V battery be used as an inverter?

If you are using a 12V battery, then the input voltage of the inverter must match the battery voltage. If the specifications of the battery and the inverter do not match, the system will not operate stably and may even damage the equipment. In addition, choose the right inverter power and battery capacity for your home or commercial needs.

Do inverters need to be connected to batteries?

Connecting inverters to batteries is an important part of an off-grid power solution or backup power system, and the right connections ensure that the system runs efficiently.

How to connect a battery to an inverter?

The connection between the battery and the inverter should be made using



standardized connectors, ensuring that the joints are secure and not loose. In addition, make sure that the cables are securely connected to avoid looseness or poor contact that could lead to inefficiencies.

Can a 9v battery power a microwave?

Yes it is theoretically possible to power everything using 9V batteries but you need very large converters and transformers and super many batteries to get enough power. To use a normal 1000W microwave you need an at least 1000W DC-DC converter and an at least 1000W inverter and like 1000 batteries to just start a single microwave.



9v battery connected to inverter



How to Connect your Battery to an Inverter , BatteryEvo ...

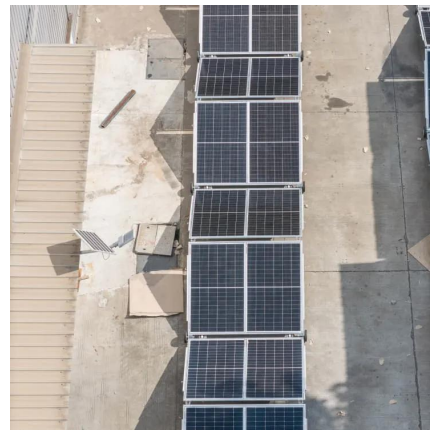
? How to Connect Your Home Battery System to an Inverter Today, we're showing you the simplest way to connect your home battery system to an inverter, empowering you to power your home efficiently.

[WhatsApp](#)

Can A 12 Volt Inverter Use A 9 Volt Battery? Power Compatibility

A 12 volt inverter requires an input voltage between 11 and 14 volts, similar to a car battery. A 9 volt battery does not meet this requirement. This low voltage may prevent the ...

[WhatsApp](#)



How to Connect your Battery to an Inverter , BatteryEvo ...

Our guide will help you every step of the way to ensure you have reliable power when you need it most. ? Watch now to learn how to seamlessly integrate your home battery system with an

[WhatsApp](#)



Are there small 9v to 9v DC to AC inverters? : r/batteries

Hello, I am trying to make super simple polyimide heater system powered with two 9-volt batteries in parallel. The heater plates need ac



power, and I can't find any super small 9v to 9v inverters.

[WhatsApp](#)



Can a 9 Volt Battery Be Used With a Duralast Power Inverter?

No, a 9-volt battery should not be used with a Duralast power inverter --it's not compatible and lacks the necessary voltage and current capacity to operate the inverter safely ...

[WhatsApp](#)



JK BMS Not activating (JK-B2A8S20P) , DIY Solar Power Forum

Connect the positive side of the 9 volt to the negative end of the cells, the B- lead of the BMS. Then connect the negative side of the 9 volt battery to the P- lead of the BMS. Just ...

[WhatsApp](#)



Lifepo4 batteries showing 12.8v and 12.9v after charging?

With both batteries seemingly fully charged and disconnected from everything I checked their voltage. One battery shows 12.8v and the other shows 12.9v with no load, nothing connected.

[WhatsApp](#)





Charge the battery with power charger while inverter is connected

I have a NOCO genius 1 and a 12v 100Ah lithium-ion battery, and an inverter. Based on your previous reply, I believe it should be possible to continuously charge the battery ...

[WhatsApp](#)



9V Battery and 7404 and 7408 , Electronics Forum (Circuits, ...

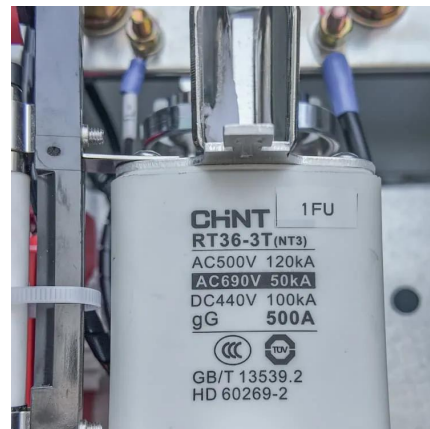
One set uses 9V, perfect for a 9V battery, and the others use 5V, namely the 74LS04 inverter and the 74LS08 NAND. I want to use resistors to adjust to 5V so all chips can ...

[WhatsApp](#)

[Why can't I power everything with a 9 V DC battery?](#)

In general, the smaller the battery the higher its internal resistance. Thus small batteries are limited in the amount of instantaneous power they can produce. Try to draw too ...

[WhatsApp](#)



[Beginner question for battery to inverter connections](#)

The interconnecting cables between batteries making the parallel connections need to be the same gauge as the feed cables to the inverter. The interconnecting cables between ...

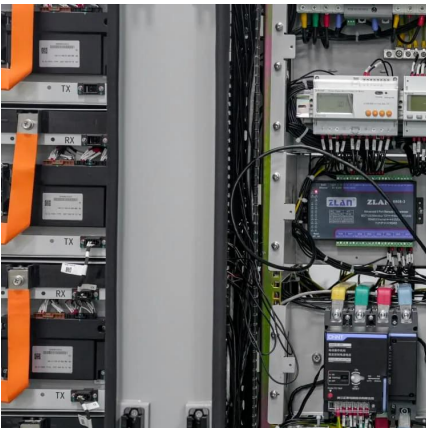
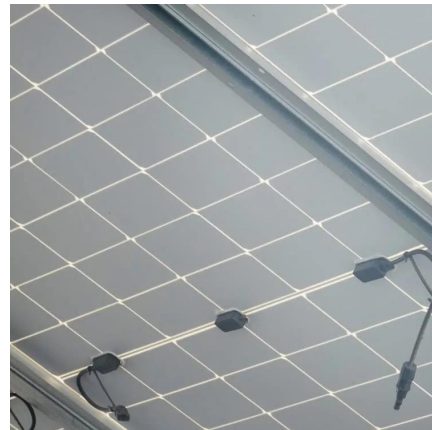
[WhatsApp](#)



Are there small 9v to 9v DC to AC inverters? : r/batteries

Hello, I am trying to make super simple polyimide heater system powered with two 9-volt batteries in parallel. The heater plates need ac power, and I can't find any super small ...

[WhatsApp](#)



[Why can't I power everything with a 9 V DC battery?](#)

And that's okay. The 9V battery isn't designed for bigger stuff. Internally, 9V batteries are actually a stack of six tiny 1.5V cells connected in series. The internal resistance ...

[WhatsApp](#)

Contact Us

For catalog requests, pricing, or partnerships, please visit:
<https://www.straighta.co.za>