

80kw wind power generation system





Overview

What is a wes80 wind turbine?

The WES80 is a two bladed, high performance, reliable 80 kW midsize wind turbine with a rotor diameter of 18 meters. The mechanical part of the WES80 is based on the original proven design from 1983. For the electrical part, power conversion and control, the latest technology is used. The WES80 is also available as Hybrid Wind/diesel system.

What is a wes80 system?

The mechanical part of the WES80 is based on the original proven design from 1983. For the electrical part, power conversion and control, the latest technology is used. The WES80 is also available as Hybrid Wind/diesel system. Wind Energy Solutions BV.

Where are wes80 turbines made?

WES80 turbines are manufactured and exported by WES in the Netherlands, and are sold, installed and maintained all over the world by a global network of certified and trained dealers. WES80 main characteristics High performance (With 6.5 m/s wind outputs 193.000 kWh/year). Over 750 units installed around the world.

What is a Wes turbine?

Wind Energy Solutions BV (WES) is the manufacturer of the WES50, WES80, WES100 and WES250 midsize wind turbines. WES turbines are accessible and affordable, and are distributed around the world through a global network of trained and certified partners. WES turbines are ideally suitable for distributed wind power applications.

Are Wes Turbines suitable for distributed wind power applications?

WES turbines are ideally suitable for distributed wind power applications. WES wind turbines provide users with reduced energy costs and carbon emissions.



They also enable users to take advantage of income opportunities related to power generation.

How does a wind turbine generate electricity?

Wind turbines use wind power to drive the wind wheel to rotate. Then, use a speed increaser to increase the speed of rotation to prompt the generator to generate electricity. Wind wheel: It consists of multiple blades and converts wind energy into mechanical energy. Generator: Converts mechanical energy into electrical energy.



80kw wind power generation system



[80KW WIND TURBINE , Solar Power Solutions](#)

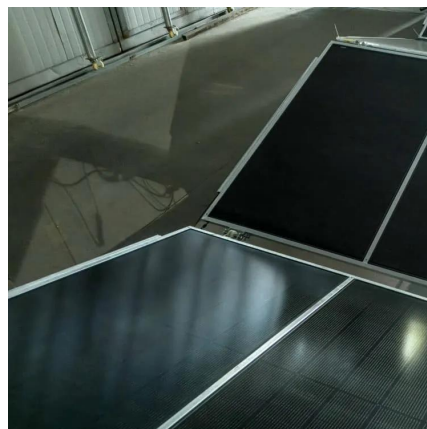
A storage system, such as a Li-ion battery, can help maintain balance of variable wind power output within system constraints, delivering firm power that is easy to integrate with other ...

[WhatsApp](#)

10 Years Warranty Windmill 50kw 80kw 100kw Vertical Axis Wind Turbine

Durable and Long-Lasting: This wind turbine boasts a 10-year warranty, ensuring a long-term investment for customers seeking reliable renewable energy solutions. The top-quality tower ...

[WhatsApp](#)



80KW Free Energy Generator 80KW Power Hydroelectric Water Turbine ...

3, Suitable for small and medium-sized wind power systems, off-grid wind power, and offshore wind power. Permanent magnet generators are used in hydropower generation. 1, They are ...

[WhatsApp](#)



220V 80kw Wind Turbine Generator IP54 Most Efficient Wind Generator

The most common vertical axis turbine is the Darrieus wind turbine, named after French engineer Georges Darrieus who patented the



design in 1931, and looks like a giant two-bladed egg beater.

[WhatsApp](#)



Wind Turbine Generator System Power Performance Test ...

This test was conducted in accordance with the International Electrotechnical Commission's (IEC) standard, Wind Turbine Generator Systems Part 12: Power Performance Measurements of ...

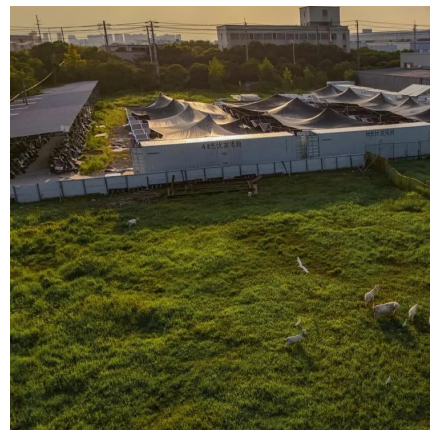
[WhatsApp](#)



Blue Star Power Systems, Inc. , Power Generation Solutions

As the world of distributed energy moves towards a cleaner, more sustainable future, and the continuing emergence of battery, solar, and wind become more of a priority, the importance of ...

[WhatsApp](#)



220V 80kw Wind Turbine Generator IP54 Most Efficient Wind Generator

The vertical axis turbine looks like an egg beater. The blades of the vertical axis turbine are attached to the top and bottom of the vertical rotor. The most common vertical axis turbine is ...

[WhatsApp](#)

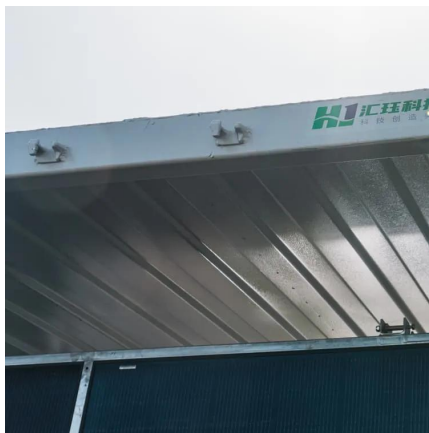
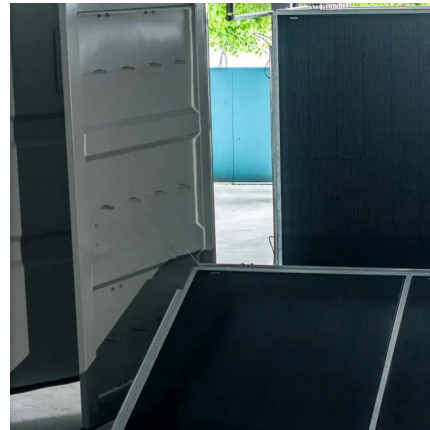




DHC Vertical Axis 80KW Wind And Solar Complementary System

Wind and solar hybrid system is a set of power generation system, the system is to use solar cell square, wind turbine (to convert AC power into DC power) to store the emitted electricity in the ...

[WhatsApp](#)



Glass Fibre Blade 380V 80KW Most Efficient Wind Generator

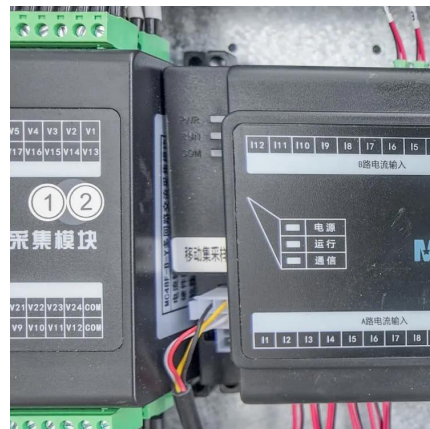
High quality Glass Fibre Blade 380V 80KW Most Efficient Wind Generator from China, China's leading 380V most efficient wind generator product, with strict quality control 80KW most ...

[WhatsApp](#)

80kw wind turbine, 220v wind generator, IP54 most efficient wind

The vertical axis turbine looks like an egg beater. The blades of the vertical axis turbine are attached to the top and bottom of the vertical rotor. The most common vertical axis turbine is ...

[WhatsApp](#)



Contact Us

For catalog requests, pricing, or partnerships, please visit:
<https://www.straightta.co.za>