

610W photovoltaic panel specifications





Overview

What is a 610w solar panel?

Designed for ground-mounted solar farms, commercial rooftops, and high-voltage solar systems (1500V DC), the JA Solar 610W panel reduces balance-of-system costs while maximizing energy yield. Key Features & Benefits: Ultra-High Power Output – 610W: One of the most powerful bifacial panels available, maximizing energy production per square meter.

Who makes a 610w bifacial solar panel?

JA Solar is a tier-1 manufacturer, renowned for high-efficiency, durable, and reliable solar panels. The 610W bifacial panel is perfect for large-scale energy projects, offering superior power output, advanced technology, and industry-leading durability. Item saved for later!.

What is a Longi 610w bifacial solar panel?

Request a Call Back The Longi 610W Bifacial Solar Panel is a 72-cell bifacial solar panel offering excellent performance with up to 22.6% peak efficiency. Ideal for ground mount applications, Longi solar panels also feature lower resistive loss with lower operating current, higher energy yields and lower operating temperature.

What is a JA Solar 610w bifacial solar panel?

JA Solar 610W Bifacial Solar Panel – Maximum Power Output, Dual-Sided Energy Capture & Ultimate Durability The JA Solar 610W Bifacial Solar Panel is engineered to deliver exceptional energy efficiency and long-lasting durability, making it an ideal choice for large-scale solar projects.



610W photovoltaic panel specifications



610 Watt Solar panels for sale , Prices, dimensions, weight, ...

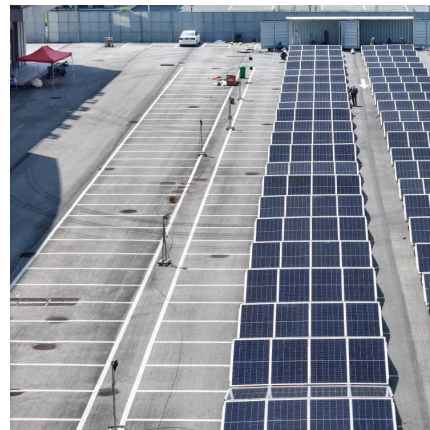
610 Watt Solar panels' range of prices, dimensions, sizes, voltage output, specifications datasheets Ranges of information Voltage: 5.6V ~ 46.07V Amp: 13.25A ~ 17.58A

[WhatsApp](#)

[TOPCon N Type 610W Bifacial Solar Panel](#)

Bluesun 610W Bifacial Half Cell Solar Panel, featuring the latest TOPCon N-Type technology. Designed for business applications, this panel offers an impressive efficiency of up to 23.2% ...

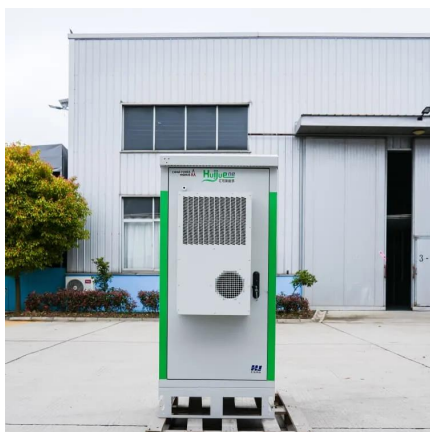
[WhatsApp](#)



[Longi 610W Bifacial Solar Panel . LR7-72HGD-610M](#)

The Longi 610W Bifacial Solar Panel is a 72-cell bifacial solar panel offering excellent performance with up to 22.6% peak efficiency. Ideal for ground mount applications, Longi solar ...

[WhatsApp](#)



[610 W , LONGI-PANEL-610W-LR7-72HGD-610M , NCA SOLAR](#)

With a peak power output of 610W and bifacial cell technology, this panel achieves an impressive efficiency of 22.6%, allowing for high



energy yields even in challenging conditions.

[WhatsApp](#)



Monocrystalline PERC Bifacial Dual Glass Solar PV Module ...

Based on 210mm silicon wafer and 120 half-cut mono-crystalline PERC 12BB solar cell, the Evo 6 Series photovoltaic panels comes with several innovative design features allowing higher ...

[WhatsApp](#)



AIKO Solar Panel AIKO-A-MAH72MW 610W Silver Frame N-Type

The AIKO AIKO-A-MAH72MW is a 610W solar panel from the N-Type ABC White Hole Series. The panel has an extremely robust design and provides high power output with 23.6% ...

[WhatsApp](#)



Contact Us

For catalog requests, pricing, or partnerships, please visit:
<https://www.straightta.co.za>