

5g single base station power consumption





Overview

How much power does a 5G station use?

The power consumption of a single 5G station is 2.5 to 3.5 times higher than that of a single 4G station. The main factor behind this increase in 5G power consumption is the high power usage of the active antenna unit (AAU). Under a full workload, a single station uses nearly 3700W.

Is 5G more energy efficient than 4G?

Although the absolute value of the power consumption of 5G base stations is increasing, their energy efficiency ratio is much lower than that of 4G stations. In other words, with the same power consumption, the network capacity of 5G will be as dozens of times larger than 4G, so the power consumption per bit is sharply reduced.

Why does 5G use so much power?

The main factor behind this increase in 5G power consumption is the high power usage of the active antenna unit (AAU). Under a full workload, a single station uses nearly 3700W. This necessitates a number of updates to existing networks, such as more powerful supplies and increased performance output from supporting facilities.

Should power consumption models be used in 5G networks?

This restricts the potential use of the power models, as their validity and accuracy remain unclear. Future work includes the further development of the power consumption models to form a unified evaluation framework that enables the quantification and optimization of energy consumption and energy efficiency of 5G networks.

How can we improve the energy efficiency of 5G networks?

To improve the energy efficiency of 5G networks, it is imperative to develop sophisticated models that accurately reflect the influence of base station (BS)



attributes and operational conditions on energy usage.

What is a 5G base station?

A 5G base station is mainly composed of the baseband unit (BBU) and the AAU — in 4G terms, the AAU is the remote radio unit (RRU) plus antenna. The role of the BBU is to handle baseband digital signal processing, while the AAU converts the baseband digital signal into an analog signal, and then modulates it into a high-frequency radio signal.



5g single base station power consumption



[Front Line Data Study about 5G Power Consumption](#)

The power consumption of a single 5G station is 2.5 to 3.5 times higher than that of a single 4G station. The main factor behind this increase in 5G power consumption is the high power ...

[WhatsApp](#)

[How Much Power Does 5G Base Station Consume?](#)

Have you ever wondered how much energy our hyper-connected world is consuming? 5G base stations, the backbone of next-gen connectivity, now draw 3-4 times more power than their 4G ...

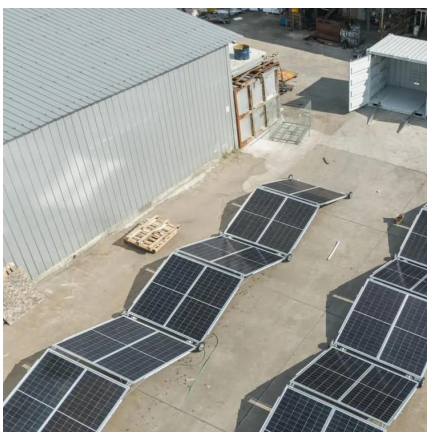
[WhatsApp](#)



A technical look at 5G energy consumption and performance

To understand this, we need to look closer at the base station power consumption characteristics (Figure 3). The model shows that there is significant energy consumption in the ...

[WhatsApp](#)



Carbon emissions and mitigation potentials of 5G base station in ...

However, a significant reduction of ca. 42.8% can be achieved by optimizing the power structure and base station layout strategy and reducing



equipment power consumption. ...

[WhatsApp](#)



Multi-objective interval planning for 5G base station virtual ...

With the rapid rise of 5G digitisation and its applications, as the core infrastructure connecting communication users and radio access networks, the construction scale of 5G base stations ...

[WhatsApp](#)



Why does 5g base station consume so much power and how to ...

In addition to other small modules that use electricity, the power consumption of a single 5G base station is generally around 3700 watts, which is about three times that of 4G ...

[WhatsApp](#)



Technical Requirements and Market Prospects of 5G Base Station ...

5G base station chips play a critical role in the construction of 5G networks. As technology continues to advance, base station chips will demonstrate higher performance and ...

[WhatsApp](#)

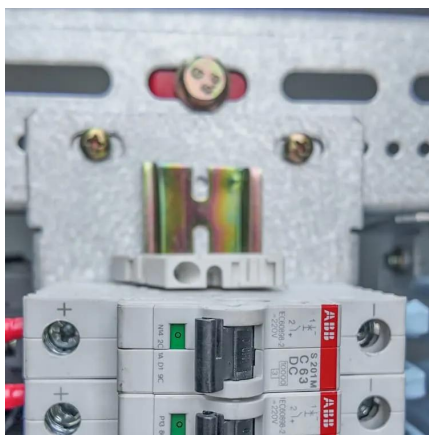




Optimal energy-saving operation strategy of 5G base station with

To further explore the energy-saving potential of 5 G base stations, this paper proposes an energy-saving operation model for 5 G base stations that incorporates communication caching ...

[WhatsApp](#)



Base station power control strategy in ultra-dense networks via ...

Within the context of 5G, Ultra-Dense Networks (UDNs) are regarded as an important network deployment strategy, employing a large number of low-power small cells to ...

[WhatsApp](#)

Comparison of Power Consumption Models for 5G Cellular Network Base

Power consumption models for base stations are briefly discussed as part of the development of a model for life cycle assessment. An overview of relevant base station power ...

[WhatsApp](#)



Analysis of energy efficiency of small cell base station in 4G/5G

Base Stations (BSs) sleeping strategy is an efficient way to obtain the energy efficiency of cellular networks. To meet the increasing demand of high-data-rate for wireless ...

[WhatsApp](#)



Machine Learning and Analytical Power Consumption Models for 5G Base

The energy consumption of the fifth generation (5G) of mobile networks is one of the major concerns of the telecom industry. However, there is not currently an accurate and ...

[WhatsApp](#)



Energy-efficiency schemes for base stations in 5G heterogeneous

In today's 5G era, the energy efficiency (EE) of cellular base stations is crucial for sustainable communication. Recognizing this, Mobile Network Operators are actively prioritizing EE for ...

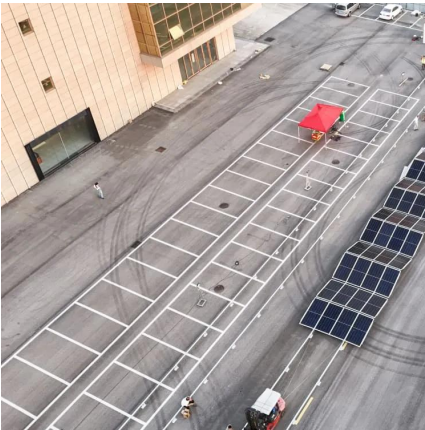
[WhatsApp](#)

[Power consumption based on 5G communication](#)

This paper proposes a power control algorithm based on energy efficiency, which combines cell breathing technology and base station sleep technology to reduce base station energy ...

[WhatsApp](#)





Modelling the 5G Energy Consumption using Real-world ...

To improve the energy efficiency of 5G networks, it is imperative to develop sophisticated models that accurately reflect the influence of base station (BS) attributes and operational conditions ...

[WhatsApp](#)

A Holistic Study of Power Consumption and Energy Savings ...

The power consumption of a 5G base station using massive MIMO is dominated by the power consumption of the radio units whose power amplifier(s) consume most of the energy, thus ...

[WhatsApp](#)



Comparison of Power Consumption Models for 5G Cellular ...

Power consumption models for base stations are briefly discussed as part of the development of a model for life cycle assessment. An overview of relevant base station power ...

[WhatsApp](#)

Contact Us

For catalog requests, pricing, or partnerships, please visit:
<https://www.straightta.co.za>