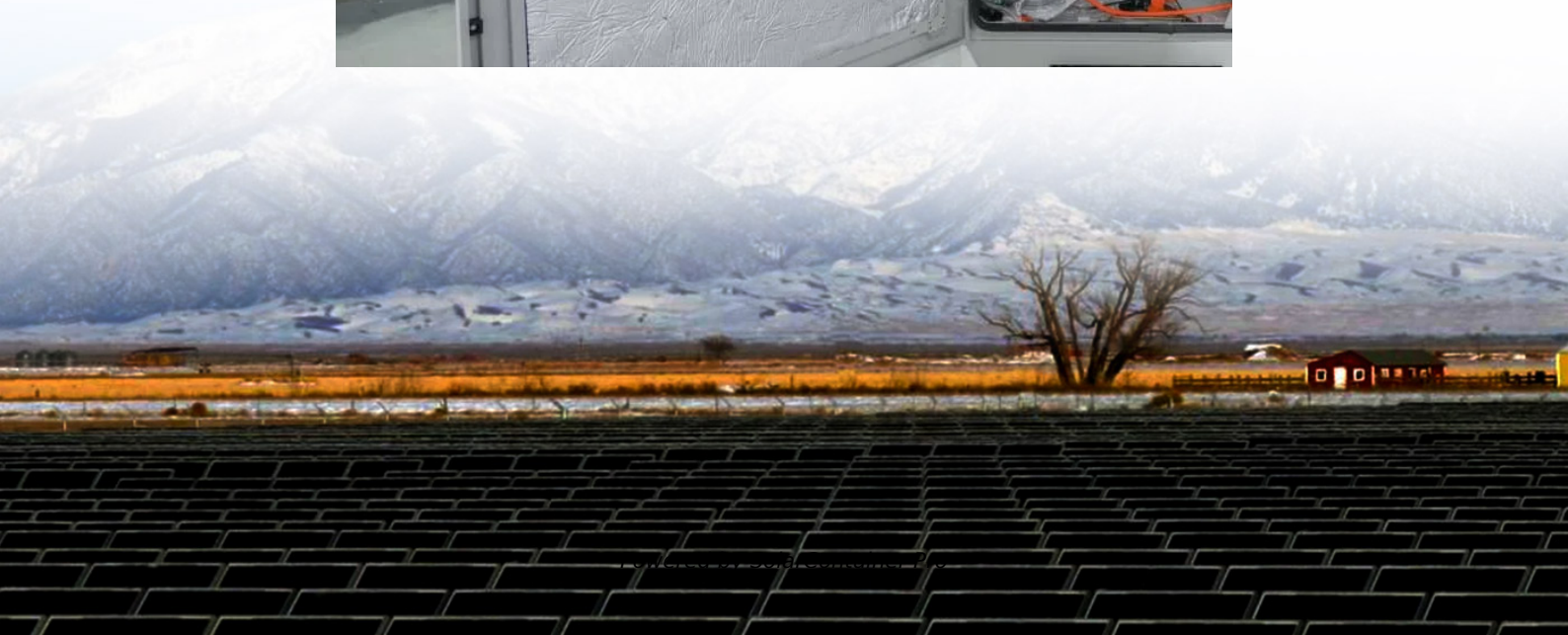
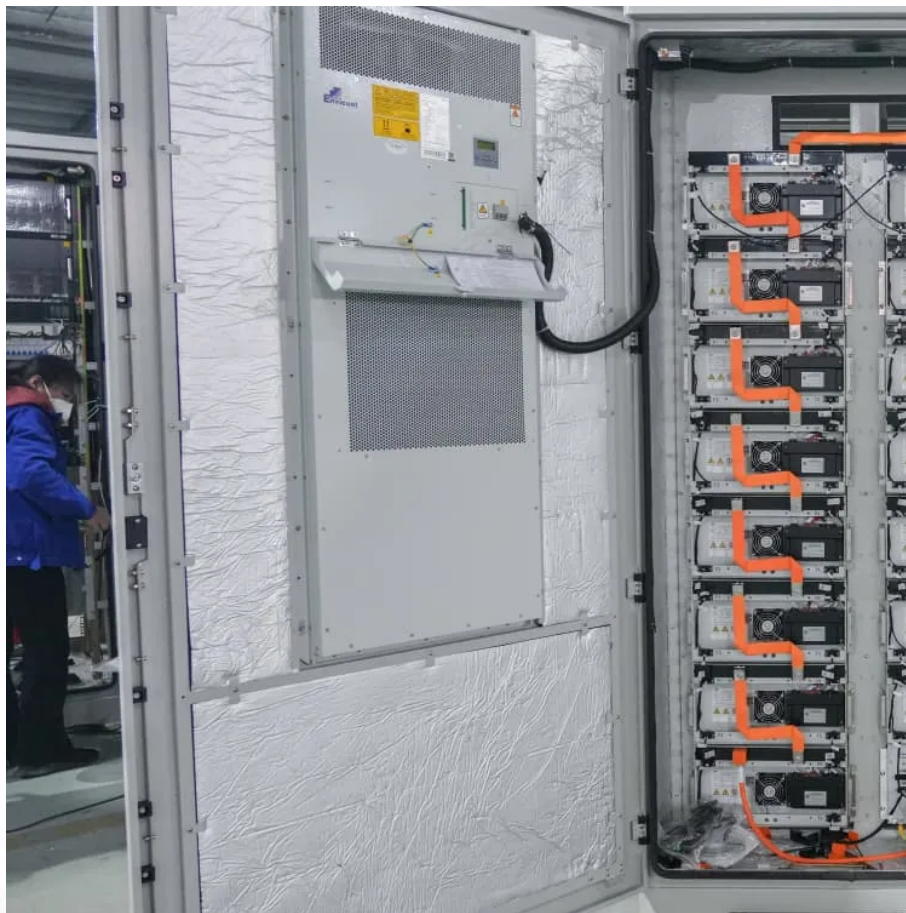


5g base station power supply characteristics





Overview

What is a 5G power supply?

The equipment ensures that devices across the infrastructure stack receive reliable power from the mains network, wherever they happen to reside. With it, individuals and organizations can continue to render services to both themselves and their customers. Overview The 5G network architecture uses multiple types of power supplies.

What are 5G infrastructure power supply considerations?

While the overall power draw is often lower, 5G equipment has narrower tolerances. It often needs multiple, precise voltages to operate correctly, with scarce leeway on either side. In the following section, we discuss 5G infrastructure power supply considerations in more detail. 5G delivers coverage to an area in a different way from 4G.

What is a 5G backhaul power supply?

The backhaul part of the 5G network connects the access interface - including masts, eNodeB, and cell site gateway - to the mobile core and internet beyond. And just like the access equipment, it too has specific power supply requirements. Backhaul power supplies must cater to aggregation routers and core routers.

Do 5G equipment power supply units need to be compact?

Small cells will need to be able to fit in compact environments, such as traffic lights, utility poles, and rooftops. So power supply units will need to be compact, able to fit comfortably alongside the equipment they power. There are also considerable heat dissipation issues that 5G equipment power supply units will need to accommodate.

Do 5G small cells need a power supply?

Experts widely believe that 5G small cells need to be able to continue running



in the event of electrical anomalies. Pairing them with integrated power supply devices costs more, but it also protects small cells if there are dramatic changes in voltage.

How does a 5G base station reduce OPEX?

This technique reduces opex by putting a base station into a “sleep mode,” with only the essentials remaining powered on. Pulse power leverages 5G base stations’ ability to analyze traffic loads. In 4G, radios are always on, even when traffic levels don’t warrant it, such as transmitting reference signals to detect users in the middle of the night.



5g base station power supply characteristics



5G infrastructure power supply design considerations (Part I)

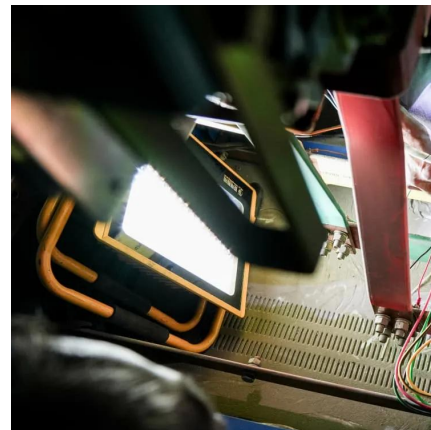
This paper presents a detailed modeling approach for a single 5 G macro base station, with the overall structure organized as follows: Section 2 focuses on the energy equipment within the ...

[WhatsApp](#)

Recommendations for 5G Small Base Station Power Supply Design

For power design engineers in the 5G era, new topologies and new materials must be familiar, because new material devices such as silicon carbide and gallium nitride have not ...

[WhatsApp](#)



Load Forecasting of 5G Base Station in Urban Distribution Network

5G is the abbreviation of the 5th generation mobile communication technology. China is one of the earliest countries in the world to implement 5G commercially. The application of 5G network ...

[WhatsApp](#)

Hierarchical regulation strategy based on dynamic clustering for

The accuracy of regulation and utilization of the regulable potential are ensured by the dynamic clustering. Abstract Utilizing the backup energy



storage potential of 5G base ...

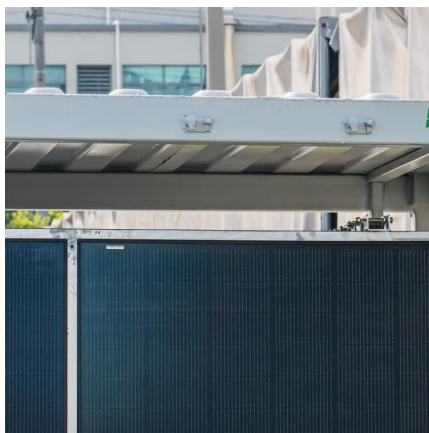
[WhatsApp](#)



Optimal energy-saving operation strategy of 5G base station with

This paper presents a detailed modeling approach for a single 5 G macro base station, with the overall structure organized as follows: Section 2 focuses on the energy equipment within the ...

[WhatsApp](#)



Selecting the Right Supplies for Powering 5G Base Stations

These tools simplify the task of selecting the right power management solutions for these devices and, thereby, provide an optimal power solution for 5G base stations components.

[WhatsApp](#)



ADI Technical Article: Choosing the Right Power Supply to Power ...

In addition, these 5G cells will also contain more integrated antennas to apply massive multiple-input, multiple-output (MIMO) technology for reliable connectivity. Therefore, a variety of state ...

[WhatsApp](#)

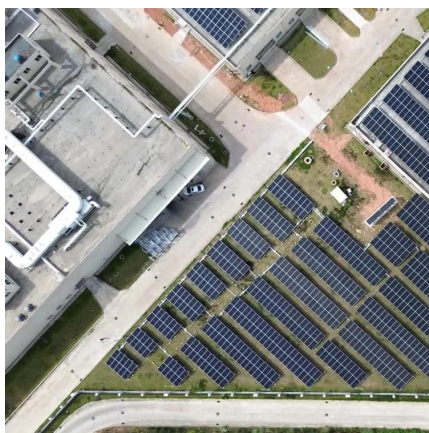




5G macro base station power supply design strategy and ...

Cheng Wentao said. In general, in the 5G era, how to reduce power consumption is a problem that the entire industry chain needs to think about. High efficiency, high power ...

[WhatsApp](#)



Selecting the Right Supplies for Powering 5G Base Stations ...

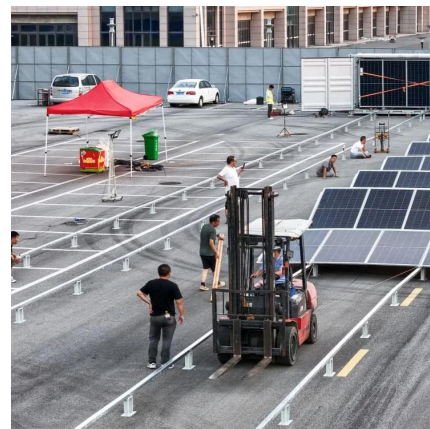
These tools simplify the task of selecting the right power management solutions for these devices and, thereby, provide an optimal power solution for 5G base stations components.

[WhatsApp](#)

The Future of Power Supply Design for Next Generation Networks (5G ...

The deployment of next-generation networks (5G and beyond) is driving unprecedented demands on base station (BS) power efficiency. Traditional BS designs rely h

[WhatsApp](#)



Selecting the Right Supplies for Powering 5G Base Stations

These tools simplify the task of selecting the right power management solutions for these devices and, thereby, provide an optimal power solution for 5G base stations components.

[WhatsApp](#)



A Voltage-Level Optimization Method for DC Remote Power ...

For example, the authors of [20,21] introduced the strong dispersion characteristics of some loads of 5G base stations but did not discuss the new power supply type according to the distribution

[WhatsApp](#)



IDEALPLUSING , What role does communication power supply play in 5G

In 5G networks, communications power supplies provide critical power supply support for base stations, data centers, edge computing, etc. and ensure emergency power ...

[WhatsApp](#)

ADI Technical Article: Choosing the Right Power Supply to Power 5G Base

In addition, these 5G cells will also contain more integrated antennas to apply massive multiple-input, multiple-output (MIMO) technology for reliable connectivity. Therefore, a variety of state ...

[WhatsApp](#)





Modeling and aggregated control of large-scale 5G base stations ...

The limited penetration capability of millimeter waves necessitates the deployment of significantly more 5G base stations (the next generation Node B, gNB) than their 4G ...

[WhatsApp](#)

Optimal energy-saving operation strategy of 5G base station with

Firstly, in terms of energy equipment, the electrical component characteristics of the 5 G base station's constituent units are modeled, including air conditioning loads, power supply systems, ...

[WhatsApp](#)



An optimal dispatch strategy for 5G base stations equipped with ...

Abstract The escalating deployment of 5G base stations (BSs) and self-service battery swapping cabinets (BSCs) in urban distribution networks has raised concerns ...

[WhatsApp](#)



5G?????????:NextG Power???????????

NextG Power????????????? NextG
Power?????????????
???5G????????????????????? 5G?????????????????
...

[WhatsApp](#)



Coordinated scheduling of 5G base station energy storage ...

Therefore, considering the unique backup power supply requirements of energy storage resources at communication base stations, it is urgent to investigate the influence of the ...

[WhatsApp](#)



Day-ahead collaborative regulation method for 5G base stations ...

Optimizing energy consumption and aggregating energy storage capacity can alleviate 5G base station (BS) operation cost, ensure power supply reliability, and provide ...

[WhatsApp](#)



The power supply design considerations for 5G base stations

To understand how, consider the power amplifier (PA) and power supply unit (PSU) in the 5G New Radio (NR) gNodeB base station. In 2G, 3G and 4G, the PA and PSU were ...

[WhatsApp](#)





[Building better power supplies for 5G base stations](#)

Building better power supplies for 5G base stations Authored by: Alessandro Pevere, and Francesco Di Domenico, both at Infineon Technologies Infineon Technologies - Technical ...

[WhatsApp](#)



Contact Us

For catalog requests, pricing, or partnerships, please visit:
<https://www.straighta.co.za>