

# 5g base station power consumption stops at 9 o'clock





## Overview

---

How much power does a 5G station use?

The power consumption of a single 5G station is 2.5 to 3.5 times higher than that of a single 4G station. The main factor behind this increase in 5G power consumption is the high power usage of the active antenna unit (AAU). Under a full workload, a single station uses nearly 3700W.

Why does 5G use more power than 4G?

The data here all comes from operators on the front lines, and we can draw the following valuable conclusions: The power consumption of a single 5G station is 2.5 to 3.5 times higher than that of a single 4G station. The main factor behind this increase in 5G power consumption is the high power usage of the active antenna unit (AAU).

Why is China putting a 5G base station to sleep?

What many people don't realise, though, is that it's also expending a lot more energy for Chinese telecom companies. At the beginning of August, a China Unicom branch announced that it would put some of its ZTE 5G base stations to sleep between 9pm and 9am to reduce electricity costs in the city of Luoyang.

Can 5G reduce energy consumption?

However, the energy consumption of 5G networks is today a concern. In recent years, the design of new methods for decreasing the RAN power consumption has attracted interest from both the research community and standardization bodies, and many energy savings solutions have been proposed.

Do 5G base stations use more energy than 4G?

A recent white paper from telecom equipment maker Huawei illustrates the problem: 5G base stations use up to three-and-a-half times more energy than



4G infrastructure. Part of the problem is that this new generation of mobile connectivity requires more densely placed base stations.

How does mobile data traffic affect the energy consumption of 5G base stations?

The explosive growth of mobile data traffic has resulted in a significant increase in the energy consumption of 5G base stations (BSs).



## 5g base station power consumption stops at 9 o clock

---



### Energy-efficient 5G for a greener future , Nature Electronics

However, the total power consumption of the 5G base station is about four times that of the 4G. Considering the high deployment density of 5G base stations, the overall power ...

[WhatsApp](#)

### 5G towers are consuming a lot of energy, so China Unicom is ...

At the beginning of August, a China Unicom branch announced that it would put some of its ZTE 5G base stations to sleep between 9pm and 9am to reduce electricity costs in ...

[WhatsApp](#)



### [Power Consumption Modeling of 5G Multi-Carrier Base ...](#)

However, the energy consumption of 5G networks is today a concern. In recent years, the design of new methods for decreasing the RAN power consumption has attracted interest from both ...

[WhatsApp](#)



### Size, weight, power, and heat affect 5G base station designs

PSU manufacturers must minimize power consumption during this quiescent period. The PSU must immediately power-up and provide the



necessary power for the radio to ...

[WhatsApp](#)



### Energy Efficiency in a Base Station of 5G Cellular Networks using

In the BS of 5G cellular networks, by considering the high deployment density, the overall power consumption may be 12 times higher than the 4 G networks. Chih-Lin et al. ...

[WhatsApp](#)



### [Power consumption based on 5G communication](#)

This paper proposes a power control algorithm based on energy efficiency, which combines cell breathing technology and base station sleep technology to reduce base station energy ...

[WhatsApp](#)



### [Empirical Comparison of Power Consumption and Data ...](#)

Abstract The new 5G category RedCap has been introduced to address small, energy-efficient 5G devices with relaxed requirements on data rates. This work performs an empirical study on ...

[WhatsApp](#)







## Why does 5g base station consume so much power and how to ...

Why does the base station consume electricity?  
The following presents the results of professional frontline testing, with the power consumption of Huawei and ZTE 5G base ...

[WhatsApp](#)



## 5G network deployment and the associated energy consumption ...

The simulation results show that 700 MHz and 26 GHz will play an important role in 5G deployment in the UK, which allow base stations to meet short-term and long-term data ...

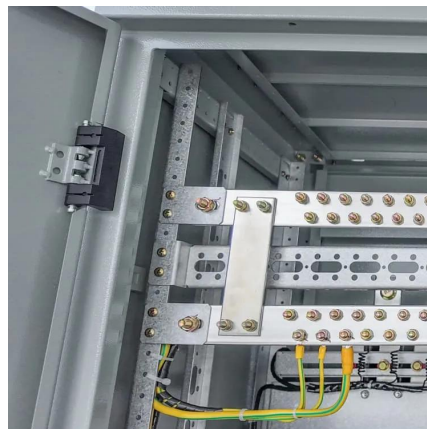
[WhatsApp](#)



## Energy consumption optimization of 5G base stations considering

An energy consumption optimization strategy of 5G base stations (BSs) considering variable threshold sleep mechanism (ECOS-BS) is proposed, which includes the initial ...

[WhatsApp](#)



## Machine Learning and Analytical Power Consumption Models for 5G Base

The energy consumption of the fifth generation(5G) of mobile networks is one of the major concerns of the telecom industry. However, there is not currently an accurate and ...

[WhatsApp](#)



### **Final draft of deliverable D.WG3-02-Smart Energy Saving of ...**

When the base station traffic increases, the power amplifier module immediately enters the working state. In order to improve the power saving efficiency, symbol aggregation shutdown ...

[WhatsApp](#)



### **Hierarchical regulation strategy based on dynamic clustering for**

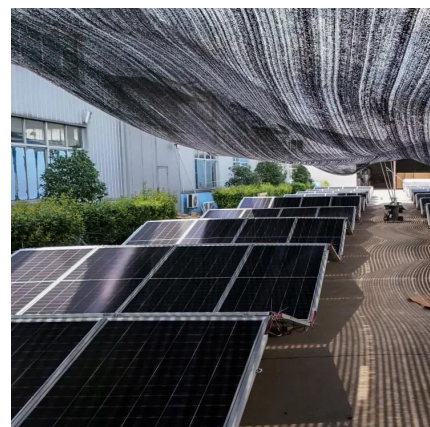
The accuracy of regulation and utilization of the regulable potential are ensured by the dynamic clustering. Abstract Utilizing the backup energy storage potential of 5G base ...

[WhatsApp](#)

### **Energy-efficiency schemes for base stations in 5G heterogeneous**

In today's 5G era, the energy efficiency (EE) of cellular base stations is crucial for sustainable communication. Recognizing this, Mobile Network Operators are actively prioritizing EE for ...

[WhatsApp](#)





### [Front Line Data Study about 5G Power Consumption](#)

The power consumption of a single 5G station is 2.5 to 3.5 times higher than that of a single 4G station. The main factor behind this increase in 5G power consumption is the high power ...

[WhatsApp](#)

### **Modeling and aggregated control of large-scale 5G base stations ...**

The limited penetration capability of millimeter waves necessitates the deployment of significantly more 5G base stations (the next generation Node B, gNB) than their 4G ...

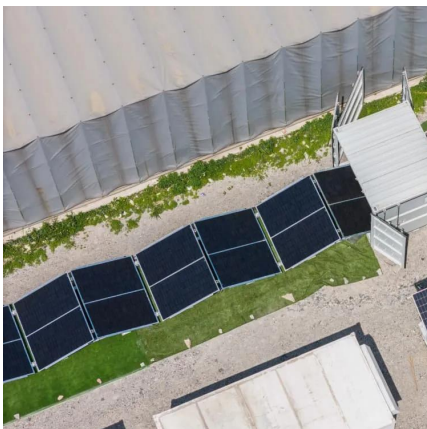
[WhatsApp](#)



### **Analysis of power consumption in standalone 5G network and ...**

This paper proposes two modified power consumption models that would accurately depict the power consumption for a 5G base station in a standalone network and a novel ...

[WhatsApp](#)



## **Contact Us**

---

For catalog requests, pricing, or partnerships, please visit:  
<https://www.straightta.co.za>