

# **5g base station annual electricity consumption**





## Overview

---

Today we see that a major part of energy consumption in mobile networks comes from the radio base station sites and that the consumption is stable. We can also see that even in densely deployed netw.

How much power does a 5G station use?

The power consumption of a single 5G station is 2.5 to 3.5 times higher than that of a single 4G station. The main factor behind this increase in 5G power consumption is the high power usage of the active antenna unit (AAU). Under a full workload, a single station uses nearly 3700W.

Is 5G more energy efficient than 4G?

Although the absolute value of the power consumption of 5G base stations is increasing, their energy efficiency ratio is much lower than that of 4G stations. In other words, with the same power consumption, the network capacity of 5G will be as dozens of times larger than 4G, so the power consumption per bit is sharply reduced.

How much power will a 5G base station use in 2025?

The Small Cell Forum predicts the installed base of small cells to reach 70.2 million in 2025 and the total installed base of 5G or multimode small cells in 2025 to be 13.1 million. "A 5G base station is generally expected to consume roughly three times as much power as a 4G base station.

What is 5G BS power consumption?

The 5G BS power consumption mainly comes from the active antenna unit (AAU) and the base band unit (BBU), which respectively constitute BS dynamic and static power consumption. The AAU power consumption changes positively with the fluctuation of communication traffic, while the BBU power consumption remains basically unchanged , , .

Why does 5G use so much power?

The main factor behind this increase in 5G power consumption is the high



power usage of the active antenna unit (AAU). Under a full workload, a single station uses nearly 3700W. This necessitates a number of updates to existing networks, such as more powerful supplies and increased performance output from supporting facilities.

How does mobile data traffic affect the energy consumption of 5G base stations?

The explosive growth of mobile data traffic has resulted in a significant increase in the energy consumption of 5G base stations (BSs).



## 5g base station annual electricity consumption

---



### Power consumption analysis of access network in 5G mobile ...

The architectural differences of these networks are highlighted and power consumption analytical models that characterize the energy consumption of radio resource ...

[WhatsApp](#)

### A technical look at 5G energy consumption and performance

In this post, we explore the energy saving features of 5G New Radio and how this enables operators to build denser networks, meet performance demands and maintain low 5G ...

[WhatsApp](#)



### Energy consumption optimization of 5G base stations considering

An energy consumption optimization strategy of 5G base stations (BSs) considering variable threshold sleep mechanism (ECOS-BS) is proposed, which includes the initial ...

[WhatsApp](#)



### The carbon footprint response to projected base stations of China's 5G

We decomposed the CO<sub>2</sub> footprint of China's 5G networks and assessed the contribution of the number of 5G base stations and mobile data





traffic to 5G-induced CO 2 ...

[WhatsApp](#)



### The Long Road to Sobriety: Estimating the Operational ...

It is quite likely that the huge energy efficiency gains achieved by technology evolution have at least been compensated by the surge in data traffic. Therefore, in this paper, we estimate the ...

[WhatsApp](#)



### Energy-saving Scheme of 5G Base Station Based on LSTM

The total annual power consumption is expected to reach 243 billion degrees when the 5G base station is fully built. In the tidal scene, some 5G base station in an idle state still ...

[WhatsApp](#)



### Breakdown of power consumption in radio base stations [32].

Download scientific diagram , Breakdown of power consumption in radio base stations [32]. from publication: Approaches to energy efficient wireless access networks , Due to increasing data ...

[WhatsApp](#)





## Machine Learning and Analytical Power Consumption Models for 5G Base

The energy consumption of the fifth generation (5G) of mobile networks is one of the major concerns of the telecom industry. However, there is not currently an accurate and ...

[WhatsApp](#)



## [Power consumption based on 5G communication](#)

At present, 5G mobile traffic base stations in energy consumption accounted for 60% ~ 80%, compared with 4G energy consumption increased three times. In the future, high-density ...

[WhatsApp](#)

## [Front Line Data Study about 5G Power Consumption](#)

The power consumption of a single 5G station is 2.5 to 3.5 times higher than that of a single 4G station. The main factor behind this increase in 5G power consumption is the high power ...

[WhatsApp](#)



## [How Much Power Does 5G Base Station Consume?](#)

Have you ever wondered how much energy our hyper-connected world is consuming? 5G base stations, the backbone of next-gen connectivity, now draw 3-4 times more power than their 4G ...

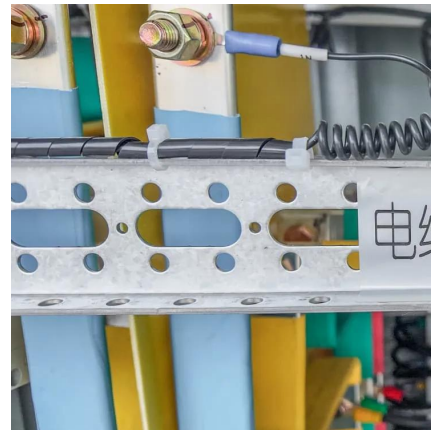
[WhatsApp](#)



### Comparison of Power Consumption Models for 5G Cellular Network Base

Power consumption models for base stations are briefly discussed as part of the development of a model for life cycle assessment. An overview of relevant base station power ...

[WhatsApp](#)



### Comparison of Power Consumption Models for 5G Cellular ...

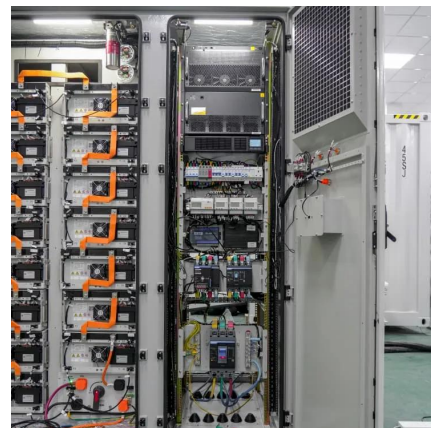
Power consumption models for base stations are briefly discussed as part of the development of a model for life cycle assessment. An overview of relevant base station power ...

[WhatsApp](#)

### Evaluation and projection of 4G and 5G RAN energy footprints

Energy consumption of mobile cellular communications is mainly due to base stations (BSs) that constitute radio access networks (RANs). 5G technologies are expected to ...

[WhatsApp](#)





### **Base Station Energy Use in Dense Urban and Suburban Areas**

This article fills this gap by providing a reference on the energy consumption of base transceiver stations for reported mobile data usage for different Radio Access Technologies; 3G, 4G and ...

[WhatsApp](#)

### **Energy Consumption of 5G, Wireless Systems and the Digital ...**

"A 5G base station is generally expected to consume roughly three times as much power as a 4G base station. And more 5G base stations are needed to cover the same area," -IEEE ...

[WhatsApp](#)



## **Contact Us**

---

For catalog requests, pricing, or partnerships, please visit:  
<https://www.straightta.co.za>