

# 540 capacity photovoltaic panel size





## Overview

---

To give you an idea, a standard 540 watt solar panel is approximately 88 x 46 inches and tips the scales at around 72 pounds. Most modules with this output rating are monocrystalline and typically have at least 72 cells (144 half-cut cells).



## 540 capacity photovoltaic panel size

---



### **Talesun Solar 540W Solar Panel 144 Cell Bifacial TD7G72M-540**

Talesun Solar Panel Product Lines BISTAR Series - Monocrystalline PERC Technology The BISTAR series panels use monocrystalline PERC half-cut solar cells. They come in different ...

[WhatsApp](#)

### [Standard Solar Panel Sizes And Wattages \(100W-500W ...](#)

The goal here is to get to the average solar panel size by wattage. You can find typical dimensions of 100W, 150W, 170W, 200W, 200W, 220W, 300W, 350W, 400W, and 500W solar ...

[WhatsApp](#)



### **PV panels monocrystallines Silk® Plus 540-550 Wp , Futurasun**

Silk® Plus is a series of monocrystalline PV modules with large area 182 mm 144 PERC half-cut cells with power up to 550 Wp. Silk® Plus reaches an high efficiency and is the latest solution ...

[WhatsApp](#)



### **540W Bifacial Mono PERC Solar Panel**

Take control of your energy costs with our high-efficiency 540W monocrystalline solar panel. With a rated voltage of 41.39V and a rated current of 13.05A, this panel is designed to



deliver ...

[WhatsApp](#)



### [540W photovoltaic panel specifications and models](#)

What is the size of a 540W solar panel in feet?  
The 540W solar panel typically measures approximately: Length: 2285 mm (about 7.5 feet) Width: 1140 mm (about 3.7 feet) Thickness:

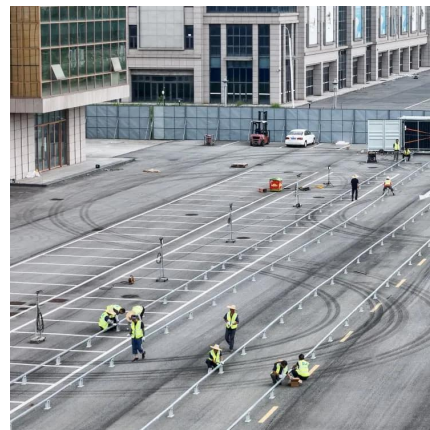
[WhatsApp](#)



### **High Efficiency Half-Cut 540W 550W 560W Mono PERC Solar ...**

HiMAX6 solar panels integrate large 210mm half-cut cells with Mono PERC technology, delivering a high power output ranging from 575W to 605W, and achieving power efficiency up to 21.65%.

[WhatsApp](#)



### **540 Watt Solar panels for sale , Prices, dimensions, weight, ...**

540 Watt Solar panels' range of prices, dimensions, sizes, voltage output, specifications datasheets Ranges of information Voltage: 31.1V ~ 66V Amp: 8.19A ~ 17.36A

[WhatsApp](#)





### [Bluebird 540 Watt Half Cut Solar Panels](#)

A 540W Half-Cut Solar Panel refers to a photovoltaic panel that has a power output of 540 watts and employs a "half-cut" cell design. In a half-cut design, the solar cells on the panel are ...

[WhatsApp](#)



### [Elan Series ASB-M10-144-520-545 - SolarFeeds](#)

Introducing the Elan Series ASB-M10-144-520-545 by Adani Solar, an exceptional solar panel that represents a remarkable blend of cutting-edge technology and unmatched performance. This ...

[WhatsApp](#)

### **Photovoltaic 540 Panel Size and Weight Key Insights for Solar ...**

When planning a solar energy system, the photovoltaic 540 panel size and weight are critical factors for both residential and commercial installations. These panels, designed for high ...

[WhatsApp](#)



## **Contact Us**

For catalog requests, pricing, or partnerships, please visit:  
<https://www.straightta.co.za>