

500kw inverter output is three-phase electricity





Overview

This article explains how to convert kW to amps and amps to kW in a 1-phase AC circuit or 3-phase AC circuit. It provides two calculators for the conversion, one for converting kW to amps in a 3-phase circ.

How many kW does a 3 phase motor produce?

You can jump to 3-phase amps to kW formula and calculator here. To get an idea of how these calculators work, here is the screenshot of the 3-phase power calculator: Example of how 1st calculator works: A 3-phase motor that draws 90A and runs on a 240V circuit with a 0.8 power factor will produce 29.93 kW of electrical power.

How does a 3-phase power calculator work?

You can use this example to see how the 3-phase power calculator works: A 100 amps motor on a 240V 3-phase circuit with a 0.9 power factor produces 37.41 kW of electrical power. Insert these 3 quantities in the calculator, and you should get the same result.

How do you calculate power in a 3-phase AC circuit?

Here's the 3-phase power equation: $P \text{ (kW)} = (I \text{ (Amps)} \times V \text{ (Volts)} \times PF \times 1.732) \div 1,000$ As we can see, the electrical power in the 3-phase AC circuit depends on: I (Amps): Electrical current, measured in amps. The more amps we have, the more power we have in a three-phase circuit. V (Volts): Electrical potential, measured in volts.

What is the power factor of a 3-phase circuit?

Power factor is defined as a ratio between real power and apparent power. If current and voltage are in phase, the power factor is 1. In the 3-phase circuit, current and voltage are not in phase; thus the power factor will be anywhere between 0 and 1. This accounts for the real/apparent power ratio and is sometimes expressed as RMS current.

How do you calculate 3 phase current?



We get the 3-phase current formula like this: $I \text{ (Amps)} = P \text{ (kW)} \times 1,000 \div (V \text{ (Volts)} \times PF \times 1.732)$ Using this power formula, we can, for example, do a 3-phase motor kW to amps calculation. Do note that if a 3-phase motor with lower voltage and lower power factor will draw more amps to produce the same power output.

How many amps are in a 3-phase circuit?

At 1.0 power factor, the amps in 3-phase power in this situation is 28.87 amps. On a 3-phase circuit (with a 0.6 power factor), the 3-phase power calculator shows that the same 6 kW appliance draws 48.11 amps. To see why we get different amperage on a 3-phase circuit, let's first check how these amps are calculated using the 3-phase power formula:



500kw inverter output is three-phase electricity



[ATESS 500KW Hybrid Inverter \(without Transformer\) ...](#)

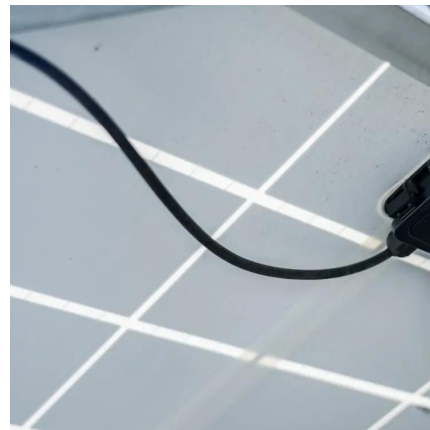
High power output, all-in-one hybrid inverter suitable for commercial and industrial applications. The unit has versatile work modes giving it suitability for off-grid, ...

[WhatsApp](#)

Deye 125kW 3 Phase Inverter Combos

Deye 125kw 3 Phase Inverter Combo with 1.72MWh Battery Pack. This solar kit provides reliable power for commercial solar and rooftop solar power projects. Includes 215kWh lithium battery ...

[WhatsApp](#)



500kVA /500kw DC-AC Pure Sine Wave off Grid Three Phase Inverter ...

500kVA /500kw DC-AC Pure Sine Wave off Grid Three Phase Inverter for Solar Power System, Find Details and Price about Solar Hybrid Inverter off Grid Inverter from 500kVA /500kw DC ...

[WhatsApp](#)

3-Phase Power Calculator + Formula (kW To Amps, Amps To ...

For this, we use the 3-phase power formula with the 1.732 factor and power factor (we'll cover the formula as well). You can jump to 3-phase



kW to amps calculator here.

[WhatsApp](#)



500KW Commercial Microgrid Three-phase Hybrid Solar Inverter

Microgrid series hybrid inverters adopt an integrated design, integrating PV controllers, energy storage converters, and on/off-grid automatic switching units, greatly improving customer ...

[WhatsApp](#)



500kw DC-AC Pure Sine Wave off Grid Three Phase Inverter for ...

SANDI SDP series Pure Sine Wave Inverter is the one of the most advanced technology DC to AC conversion products in the world, it's suitable use for areas without electricity, providing a ...

[WhatsApp](#)



500kw High Power 3 Phase 380V~480VAC Low Frequency off Grid Solar Power

Our 500KW high power 3 phase 380V~480VAC low frequency off grid solar power inverter is one of the most advanced DC to AC conversion products in the world, it is suitable use for areas ...

[WhatsApp](#)





High-power 90kw 500kw 11kw 3phase Vfd 18.5kw Inverter Drives ...

Key attributes Control Mode Vector Control, V/F Control Nominal Voltage 380 V Power Phase Number Three Phase, Single Phase Rated Power 90KW, 500KW, 11KW, 18.5KW, 5.5KW ...

[WhatsApp](#)



[BESS 500KW 1MWh AC 480V Three Phase Hybrid Grid System](#)

With a power range of 600-625W, it offers up to 25% more energy output. Designed for harsh environments, it provides excellent mechanical load resistance and PID protection for reliable ...

[WhatsApp](#)

[500Kw Off Grid Inverter With Three Phase](#)

SANDI SDP series Pure Sine Wave Inverter is the one of the most advanced technology DC to AC conversion products in the world, it's suitable use for areas without electricity, ...

[WhatsApp](#)



[Kw To Amps 3 Phase Calculator - Quick & Accurate](#)

If you're purchasing a generator to backup your facility, knowing the kW rating is a must for determining the appropriate amperage output. A kW to amps calculator tailored for three ...

[WhatsApp](#)



500kW off grid 3 phase Solar power Generation

The grid-connected solar photovoltaic power generation system is composed of photovoltaic grid array grid-tie inverters. Without the storage of the battery, the on grid inverter directly inputs ...

[WhatsApp](#)



ATESS 500KW Hybrid Inverter (without Transformer) PCS500

High power output, all-in-one hybrid inverter suitable for commercial and industrial applications. The unit has versatile work modes giving it suitability for off-grid, back-up, grid support and self ...

[WhatsApp](#)

500kw 600VDC Input to 480VAC 3 Phase Output Solar Power ...

Product Specifications -- Product Description
500kw 600VDC Input to 480VAC 3 Phase Output
Solar Power System off Grid Industrial Inverter
Technical Features for 500kw 600VDC Input to ...

[WhatsApp](#)





Contact Us

For catalog requests, pricing, or partnerships, please visit:
<https://www.straighta.co.za>