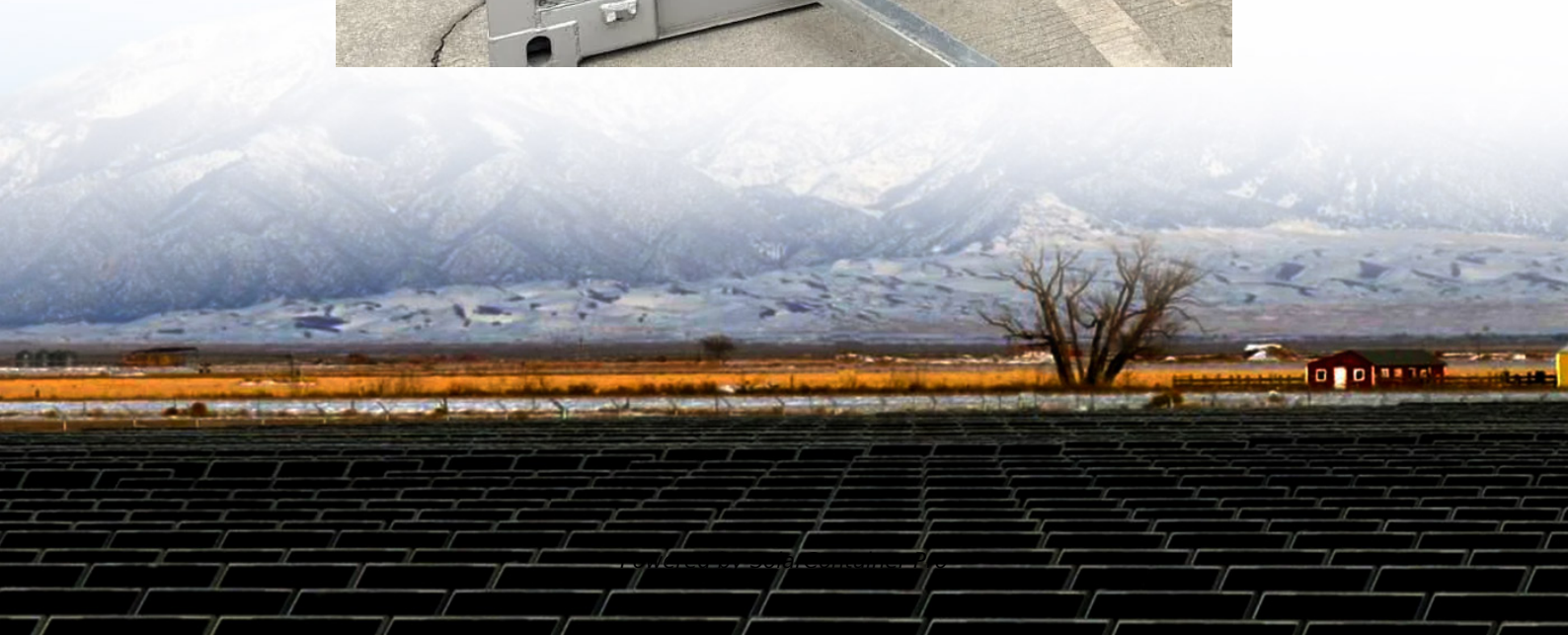


4g base station communication board





Overview

How big is a 4G base station PCB?

The PCB used in 4G base stations is mainly divided into antenna system RRU and BBU. According to one BBU towing three pairs of antennas and three pairs of RRUs, the total area of the antenna system PCB is about 0.684 square meters, and the total area of the antenna system PCB is about 0.3 meters. The total area is 0.984 square meters.

What is a 4G & 5G LTE base station?

Covering all common 4G and 5G LTE bands, the base stations feature software-defined radio, allowing great flexibility of operation and future upgrade paths. The CableFree Advanced 4G and 5G LTE SDR (software-defined radio) Small Cell Base Station – Outdoor Version – is suitable for a wide variety of applications.

What is the difference between 3G 4G & 5G base station?

The basic principles of 3G, 4G and 5G base stations are similar, but there are some differences in specific designs. 4G base station equipment is mainly composed of three parts: baseband processing unit (BBU), remote radio frequency processing unit (RRU) and antenna system.

What is a 4G & 5G LTE SDR base station?

The CableFree Advanced 4G and 5G LTE SDR (software-defined radio) Small Cell Base Station – Outdoor Version – is suitable for a wide variety of applications. Covering all common 4G and 5G LTE bands, the base stations feature software-defined radio, allowing great flexibility of operation and future upgrade paths.

What is a CableFree Emerald 4G & 5G LTE base station?

All of the the CableFree range of LTE products feature latest generation technology and upgradable features for future-proof networking and



performance. CableFree Emerald 4G & 5G LTE Software Defined Base Stations with advanced features and “stand alone” capability for private networks.

What is the CableFree advanced 4G & 5G LTE SDR small cell base station?

The CableFree Advanced 4G and 5G LTE SDR Small Cell Base Station – Outdoor Version – allows for the Rx inputs to operate in high or low sensitivity modes for NF receiver performance.



4g base station communication board



Choosing the Right Materials for Telecommunication Base Station ...

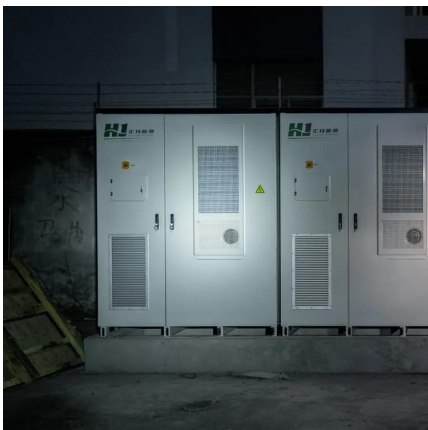
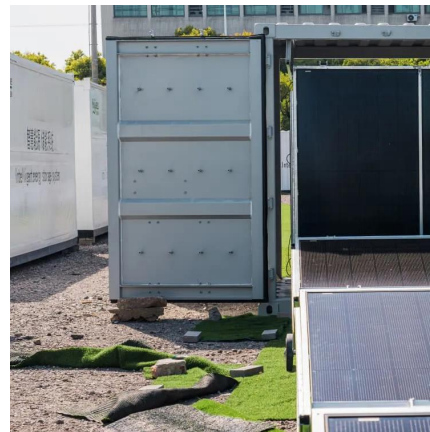
In this comprehensive guide, we'll dive deep into PCB material selection, focusing on high-frequency PCB materials and low-loss PCB materials. We'll compare FR4 and Rogers ...

[WhatsApp](#)

Quick guide: components for 5G base stations and antennas

Base stations A 5G network base-station connects other wireless devices to a central hub. A look at 5G base-station architecture includes various equipment, such as a 5G ...

[WhatsApp](#)



Investigating the Sustainability of the 5G Base Station ...

Abstract--5G is a high-bandwidth low-latency communication technology that requires deploying new cellular base stations. The environmental cost of deploying a 5G cellular network remains ...

[WhatsApp](#)

Design of Wireless Communication Base Station Monitoring ...

With the rapid popularization of the network, under the increasingly complex network security situation and the increasingly prominent network



security problems, network security ...

[WhatsApp](#)



CableFree Outdoor 4G & 5G LTE SDR Small Cell Base Station

Part of the Emerald Cellular Product Range (4G & 5G LTE), the CableFree Advanced 4G and 5G LTE SDR Small Cell Base Station Outdoor is an integrated system capable of handling 4G or ...

[WhatsApp](#)



Choosing the Right Materials for Telecommunication Base ...

In this comprehensive guide, we'll dive deep into PCB material selection, focusing on high-frequency PCB materials and low-loss PCB materials. We'll compare FR4 and Rogers ...

[WhatsApp](#)



[Original Brand New FS5B ZTE 4G BBU Baseband Board ...](#)

Original ZTE Brand: This product is an authentic ZTE FS5B 4G BBU Baseband Board, ensuring compatibility with 8200 and 8300 frames for seamless integration in base stations.

[WhatsApp](#)





Communication base station PCB - PCB Prototype & PCB ...

Communication base station PCB In telecommunications, a base station is a fixed transceiver that is the main communication point for one or more wireless mobile client devices.

[WhatsApp](#)



Contact Us

For catalog requests, pricing, or partnerships, please visit:
<https://www.straighta.co.za>