

4G base station 5G base station power consumption





Overview

To understand this, we need to look closer at the base station power consumption characteristics (Figure 3). The model shows that there is significant energy consumption in the base station.

How much power does a 5G station use?

The power consumption of a single 5G station is 2.5 to 3.5 times higher than that of a single 4G station. The main factor behind this increase in 5G power consumption is the high power usage of the active antenna unit (AAU). Under a full workload, a single station uses nearly 3700W.

Are 5G base stations causing more energy consumption?

However, Li says 5G base stations are carrying five times the traffic as when equipped with only 4G, pushing up power consumption. The carrier is seeking subsidies from the Chinese government to help with the increased energy usage.

Is 5G more energy efficient than 4G?

Although the absolute value of the power consumption of 5G base stations is increasing, their energy efficiency ratio is much lower than that of 4G stations. In other words, with the same power consumption, the network capacity of 5G will be as dozens of times larger than 4G, so the power consumption per bit is sharply reduced.

How many 5G base stations are there in a square kilometer?

Because no matter where you live in any community, there are densely packed base stations. There are 50 base stations in one square kilometer, and you can't avoid them. At that time, the street lamps, power poles and billboards you saw were probably 5G base stations in disguise. There is no way to avoid it.

Does China Mobile have a 5G base station?

China Mobile has tried using lower cost deployments of MIMO antennas,



specifically 32T32R and sometimes 8T8R rather than 64T64R, according to MTN. However, Li says 5G base stations are carrying five times the traffic as when equipped with only 4G, pushing up power consumption.

What is a 5G base station?

A 5G base station is mainly composed of the baseband unit (BBU) and the AAU — in 4G terms, the AAU is the remote radio unit (RRU) plus antenna. The role of the BBU is to handle baseband digital signal processing, while the AAU converts the baseband digital signal into an analog signal, and then modulates it into a high-frequency radio signal.



4G base station 5G base station power consumption



Energy Management Strategy for Distributed Photovoltaic 5G Base Station

The sharp increase in energy consumption imposes enormous pressure on grid power supply and operation costs [7], thus attracting increasing attention regarding the ...

[WhatsApp](#)

Power Consumption: 5G Basestations Are Hungry, Hungry Hippos

The increased power consumption of next-generation basestations may be one of the dirty little secrets of 5G, which might not be a secret much longer as operators roll out ...

[WhatsApp](#)



5G Base Station Growth: How Many Are Active? . PatentPC

A typical 5G base station consumes three times more power than a 4G station. This is due to the need for higher frequencies, greater bandwidth, and more antennas to ensure connectivity.

[WhatsApp](#)



A technical look at 5G energy consumption and performance

To understand this, we need to look closer at the base station power consumption characteristics (Figure 3). The model shows that there is



significant energy consumption in the ...

[WhatsApp](#)



Modelling the 5G Energy Consumption using Real-world ...

This paper proposes a novel 5G base stations energy consumption modelling method by learning from a real-world dataset used in the ITU 5G Base Station Energy Consumption Modelling ...

[WhatsApp](#)



5G Base Stations: The Energy Consumption Challenge

Early deployments indicate that 5G base stations require 2.5-3.5 times more power compared to a 4G one. Moreover, C-band, i.e., 3.4 GHz to 4.2 GHz, is deemed as the most popular 5G ...

[WhatsApp](#)



Energy Efficiency for 5G and Beyond 5G: Potential, Limitations, ...

In the final chapters, this work identifies key limitations, namely, computational expense, deployment complexity, and scalability constraints, and proposes a future research ...

[WhatsApp](#)

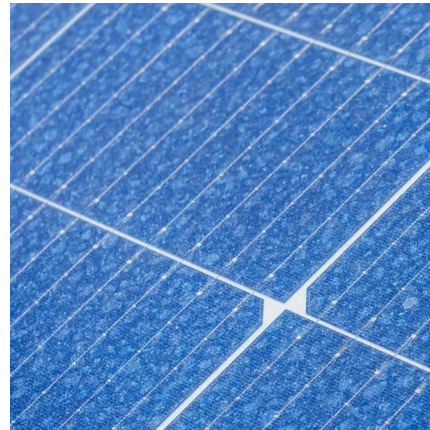




[Power consumption based on 5G communication](#)

This paper proposes a power control algorithm based on energy efficiency, which combines cell breathing technology and base station sleep technology to reduce base station energy ...

[WhatsApp](#)



Modeling and aggregated control of large-scale 5G base stations ...

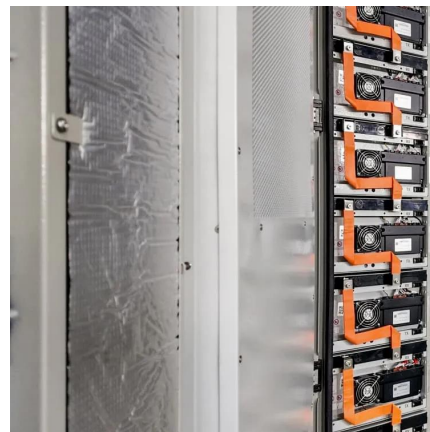
The limited penetration capability of millimeter waves necessitates the deployment of significantly more 5G base stations (the next generation Node B, gNB) than their 4G ...

[WhatsApp](#)

5G base stations use a lot more energy than 4G base stations: MTN

A typical 5G base station consumes up to twice or more the power of a 4G base station, writes MTN Consulting Chief Analyst Matt Walker in a new report entitled " Operators ...

[WhatsApp](#)



Comparison of Power Consumption Models for 5G Cellular Network Base

Power consumption models for base stations are briefly discussed as part of the development of a model for life cycle assessment. An overview of relevant base station power ...

[WhatsApp](#)



5G Base Station Deployments; Open-RAN Competition & HUGE 5G BS Power

A typical 5G base station consumes up to twice or more the power of a 4G base station, writes MTN Consulting Chief Analyst Matt Walker in a new report entitled " Operators ...

[WhatsApp](#)



[5G Transmit Power and Antenna radiation](#)

To keep the power density per MHz similar to LTE systems, the 100MHz 3.5GHz spectrum will require 5x 80 W, which is not easy to be achieved. 5G trials need to define a realistic output ...

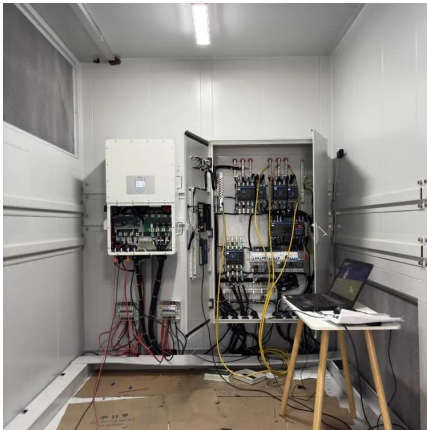
[WhatsApp](#)

[How Much Power Does 5G Base Station Consume?](#)

Have you ever wondered how much energy our hyper-connected world is consuming? 5G base stations, the backbone of next-gen connectivity, now draw 3-4 times more power than their 4G ...

[WhatsApp](#)





Comparison of Power Consumption Models for 5G Cellular ...

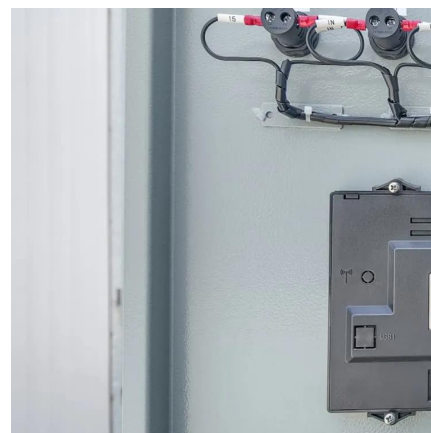
Power consumption models for base stations are briefly discussed as part of the development of a model for life cycle assessment. An overview of relevant base station power ...

[WhatsApp](#)

Energy-efficiency schemes for base stations in 5G heterogeneous

In today's 5G era, the energy efficiency (EE) of cellular base stations is crucial for sustainable communication. Recognizing this, Mobile Network Operators are actively prioritizing EE for ...

[WhatsApp](#)



Front Line Data Study about 5G Power Consumption

The power consumption of a single 5G station is 2.5 to 3.5 times higher than that of a single 4G station. The main factor behind this increase in 5G power consumption is the high power ...

[WhatsApp](#)



Contact Us

For catalog requests, pricing, or partnerships, please visit:
<https://www.straightta.co.za>