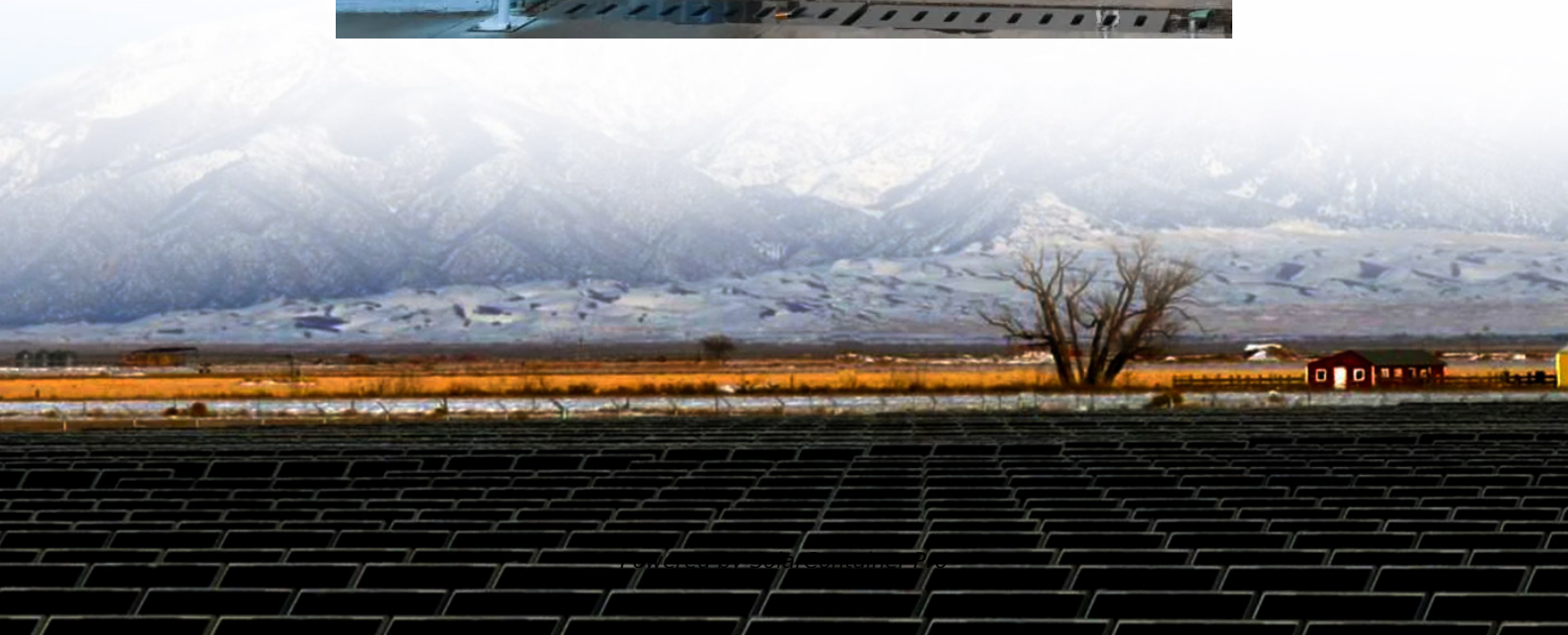


49 Solar Photovoltaic Panels





Overview

What are the different sizes of solar panels?

There are 3 standardized sizes of solar panels, namely: 60-cell solar panels size. The dimensions of 60-cell solar panels are as follows: 66 inches long, and 39 inches wide. That's basically a 66×39 solar panel. But what is the wattage?

That is unfortunately not listed at all. 72-cell solar panel size.

How much do solar panels cost?

The price of solar panels changes depending on where you live, but the average for installation is just under \$29,000 or \$2.75 per watt. On the high end, we talked to a solar customer in Hawaii who spent \$100,000 going solar. Dion in Nevada said their 10-kW system cost about \$20,000, which is about the national average price for a 7-kW system.

How many solar panels do I Need?

Once you have your final array size, simply divide by the wattage of your desired solar panels to figure out how many panels you need. Using our example of a 7.2 kW (7,200-watt) array for 100% offset, here's a sample system that would cover our needs: 7.2 kW solar array with 400W Phono Solar panels: $7,200 \text{ watts} / 400 \text{ watts} = 18 \text{ panels}$.

How many solar panels can you put on a roof?

There is no standardized chart that will tell you, for example, "A typical 300-watt solar panel is this long and this wide." If you want to calculate how many solar panels you can put on your roof, you will obviously need to know the size of a solar panel. Example: 5kW solar system is comprised of 50 100-watt solar panels.

How many kWh does a solar panel use a day?

Next, divide your monthly kWh usage by 30 to estimate your average daily



kWh usage. The average American home uses about 900 kWh per month, so we'll use that in our example: $900 \text{ kWh} / 30 \text{ days} = 30 \text{ kWh per day}$ Sunlight availability affects how much energy your solar panels generate.

How many Watts Does a solar panel produce per square foot?

Dividing the specified wattage by the square footage of the solar panel will give us just this result: The average solar panel output per area is 17.25 watts per square foot. Let's say that you have 500 square feet of roof available for solar panel installation.



49 Solar Photovoltaic Panels



[Standard Solar Panel Sizes And Wattages \(100W-500W ...](#)

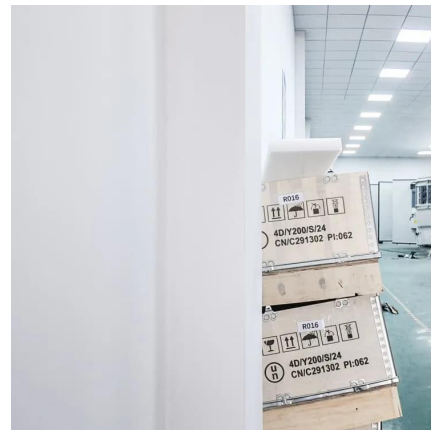
To bridge that gap of very useful knowledge needed, we have compared and averaged the sizes of 100-watt to 500-watt solar panels available on the market. The goal here is to get to the ...

[WhatsApp](#)

[New Solar Install with side ADU 49 Panel PV System](#)

We skillfully installed a total of 49 solar panels on the main house and the Accessory Dwelling Unit (ADU), fully harnessing the sun's energy to power their residence. The result was a ...

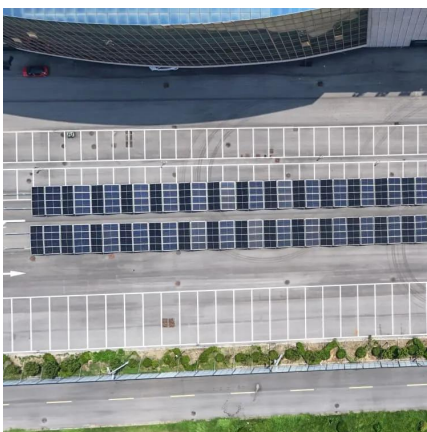
[WhatsApp](#)



[WOW 275w SOLAR PANELS USE EXCELLENT CONDITION 49.99](#)

275 w Use Solar Panels in great shape modern black frame Start your solar project today and I am become energy independent Each panel is inspected and tested for proper volts on sale ...

[WhatsApp](#)



[Home Solar Panels and Systems , Tesla](#)

Generate, use, store and charge--all with one fully integrated clean energy ecosystem by Tesla. All of our products work together seamlessly, optimizing your energy usage and



savings while ...

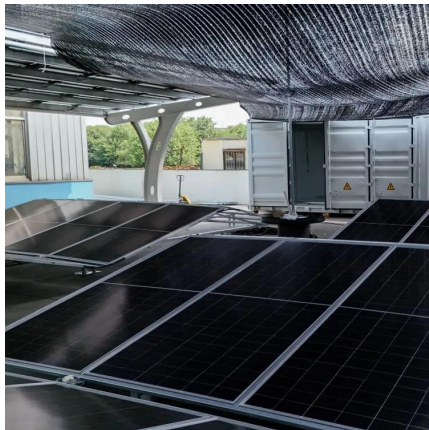
[WhatsApp](#)



[How Many kWh Does A Solar Panel Produce Per Day?](#)

Quick outtake from the calculator and chart: For 1 kWh per day, you would need about a 300-watt solar panel. For 10kW per day, you would need about a 3kW solar system. If we know both the ...

[WhatsApp](#)



Contact Us

For catalog requests, pricing, or partnerships, please visit:
<https://www.straighta.co.za>