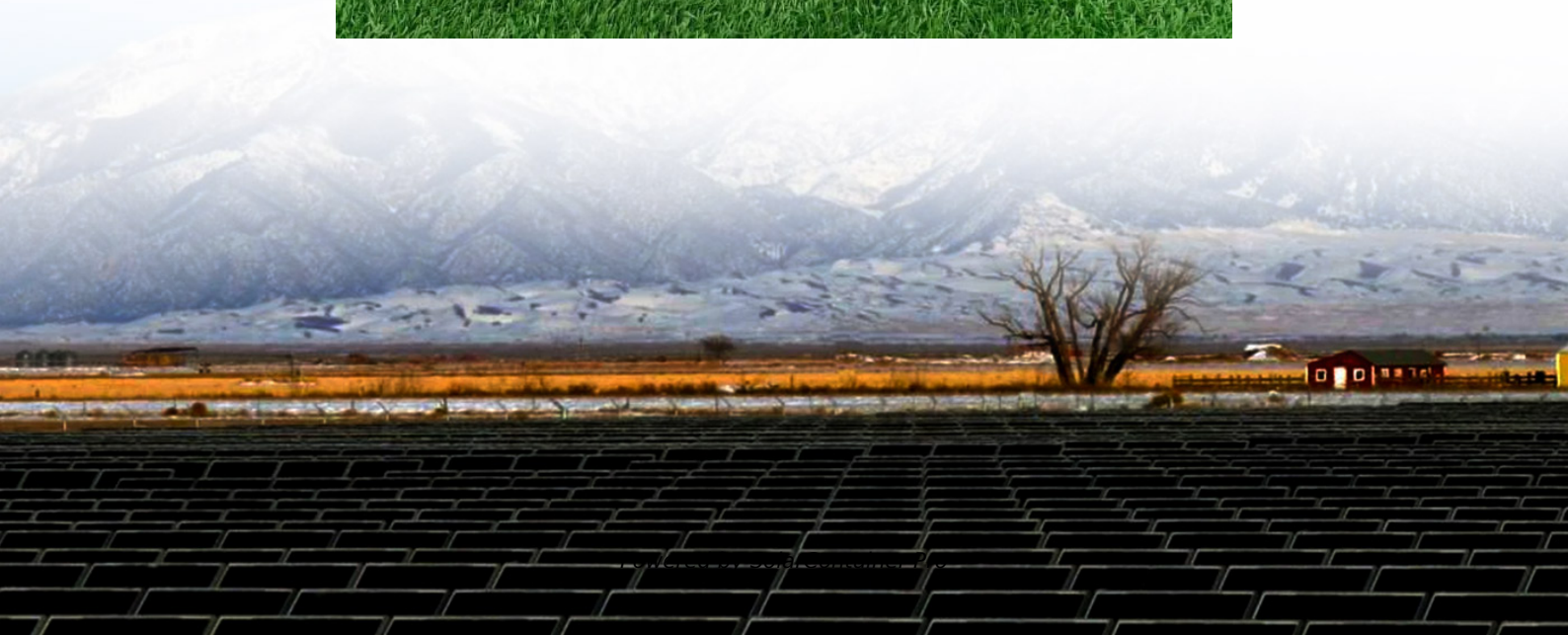


48v to 220v inverter to 12v





Overview

Can a 1500W inverter revert a battery into 220V AC?

1500W 220V DC to AC Pure Sine Wave Inverter, 92% efficient, for 12V, 24V, 48V battery systems with lead-acid or lithium battery, CE certified with 1 year warranty. This 1500W Inverter can reverse the DC power from the battery into 220V AC power.

What is a 48 watt inverter?

48V 2000W power inverter with universal socket and USB port, modified sine wave or pure sine wave output waveform are available. Option for 110V/120V or 220V/230V/240V AC 50Hz/60Hz, suitable DC to AC inverter for home use to charge TV, laptop, fans, lights and other appliances. Storage temperature of this 2000 watt inverter between -30 °C to +70 °C.

How does a 48V power inverter work?

In terms of functionality, a 48V power inverter typically consists of several key components. These include a DC input, an inverter circuit that converts DC to AC power, control electronics for regulating the output voltage and frequency, and output sockets or terminals to connect AC-powered devices.

What is the working temperature of a 48V 5000W inverter?

Working temperature of this 48V 5000W inverter between -10 °C to 50 °C. A 48V power inverter is a device used to convert direct current (DC) electrical power from a 48-volt battery or DC power source into alternating current (AC) power. In terms of functionality, a 48V power inverter typically consists of several key components.

What is a 12V 24V 48V 60V 72V inverter used for?

It is ideal for powering a variety of high-demand appliances. This inverter can provide you with reliable power. ♥ [Multiple specifications] - The inverter provides 12V 24V 48V 60V 72V multiple specifications, and the output voltage



frequency can be customized to 50Hz or 60Hz. You can contact us for any needs, and we can meet them.

How long does it take a solar power inverter to ship?

Usually ships within 2 to 3 days. 5000W DC 12V/24V/48V/60V/72V Pure Sine Wave Inverter Charger DC Input AC Output 120V/240V Low Frequency Solar Power Inverter Converter for Home, Vehicles, Off-Grid, 12V to 220V Brief content visible, double tap to read full content.



48v to 220v inverter to 12v



5000W Car Power Inverter DC 12V/24V/48V to AC 220V Pure ...

For example, if your battery voltage is 12V, please choose a 12V inverter. The larger the battery capacity, the greater the electric power it can drive. How much power the ...

[WhatsApp](#)

48v Inverter, 48v DC to 120v/220v AC Power Inverter , inverter

High quality yet low price 48V solar power inverter for sale in Inverter . The inverters convert 48 volt DC power to AC home power, available with 110V/120V or 220V/230V/240V for ...

[WhatsApp](#)



FCHAO Pure Sine Wave Inverter 12V 24V 48V To 220V 230V ...

I received it in 13 days in saudi arabia. The inverter is of good quality. But delivery is 129 days. It was lucky that no one fell for the idea of stealing it at customs or Ukrposhta. You will make the ...

[WhatsApp](#)



[1500W 12V 24V 48V DC to AC 220V Pure Sine Wave Inverter](#)

1500W 220V DC to AC Pure Sine Wave Inverter, 92% efficient, for 12V, 24V, 48V battery systems with lead-acid or lithium battery, CE certified



with 1 year warranty. This 1500W Inverter can ...

[WhatsApp](#)



Changi 5000W 12V 24V 48V Dc To Ac 220V pure sine wave ...

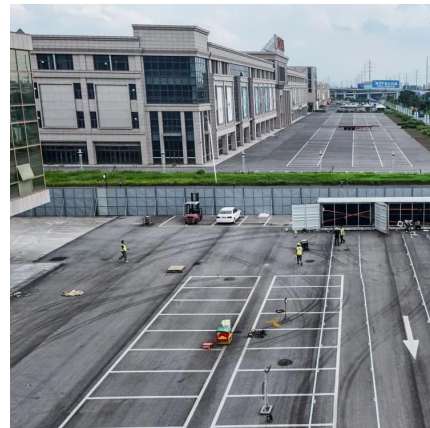
Our pure sine wave inverters provide high-quality, stable, and clean power for sensitive electronic devices. They are designed to convert DC power from batteries or solar panels into AC power ...

[WhatsApp](#)

[5000W DC 12V/24V/48V/60V/72V Pure Sine Wave Inverter ...](#)

[Powerful Performance] - With 2500W continuous power output and 5000W peak power, it has high conversion efficiency (>90%), low no-load loss and more energy-saving. It is ...

[WhatsApp](#)



10000W Pure Sine Wave Solar Power Inverter , DC 12V / 24V / 48V ...

10000W Pure Sine Wave Power Inverter! Effortlessly convert DC (12V, 24V, 48V) to AC (110V-120V, 220V-230V). Power up your car, truck, RV, and home with solar. Shop now for free ...

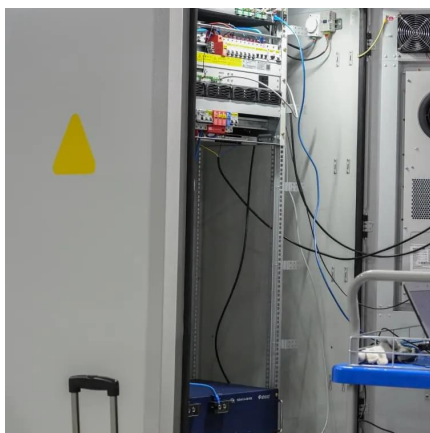
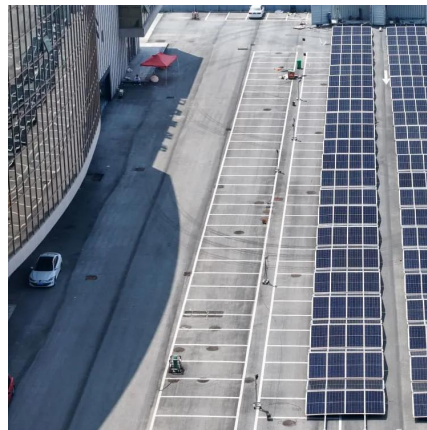
[WhatsApp](#)



Pure Sine Wave Inverter, 3000W, Convert DC 12/24/48V to AC 110/220V

About this item ?100% 1500W Heavy Duty Continuous Output?3000W inverter 12V/24V/48V DC to 110V/220 AC can really run continuously for a long time under 1500W ...

[WhatsApp](#)



Pure Sine Wave Power Inverter 10000 Watt Inverters 12V 24V 48V ...

It converts battery power from 12V/24V/48V DC to 110V 220V AC for home use, so you can power a wide range of loads from your car, such as office equipment and basic household appliances.

[WhatsApp](#)

[Powerful 2000W 12V 48V to 220V inverter](#)

This inverter has 2 buttons (ON_OFF). It doesn't use switches. If you want to use the switch, I'll design a different version. It can work at 12V or 24V. If you use 24V. You need module LM2596.

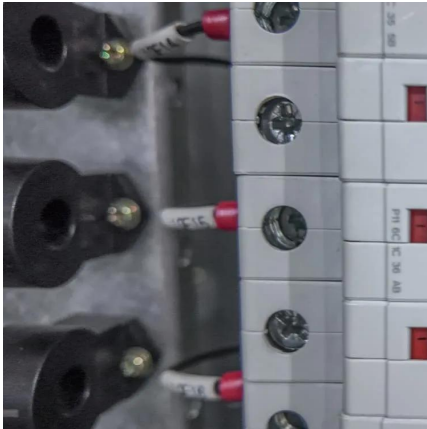
[WhatsApp](#)



8000W Pure Sine Wave Inverter , DC 12V / 24V / 48V To AC 220V ...

Experience uninterrupted power wherever you are with our 8000W Pure Sine Wave Inverter. Engineered for multi-tasking, this high-capacity inverter delivers seamless power for various ...

[WhatsApp](#)



Contact Us

For catalog requests, pricing, or partnerships, please visit:
<https://www.straighta.co.za>