

## 48v 24a inverter





## Overview

---

What is a 48 volt inverter?

The 48v inverters require a 48-volt input voltage and are typically used in larger systems, such as residential and commercial solar installations or off-grid power systems. These inverters offer higher power output and improved efficiency, making them suitable for applications with significant energy demands.

Should I choose a 24V or 48V inverter system?

While 24v systems may offer immediate cost savings for small applications, 48v inverter systems provide better long-term value for larger or growing power requirements, due to their enhanced efficiency. Choosing between the 24v and the 48v inverters depends on factors such as your energy demands, efficiency and compatibility with other appliances.

What are the features of a 24 volt / 48 volt split phase inverter?

AC/Battery Priority: The 24 volt/ 48 volt split phase inverter is designed with AC priority by default, you can choose the battery priority by SW5 switch. ★ Adjustable Charging Current: The max charge current can be adjusted from 0%-100% via a liner switch.

What is a 24 volt inverter?

A 24 Volt Inverter is not quite as typical as a 12V Inverter. They have the same primary type of operation but operate at different input voltages. This article reviews some of the best, moderately priced 24V inverters currently on the market and then reviews standard criteria you should consider when selecting an inverter.

Why is a 48V solar inverter important?

Higher voltages improve efficiency by reducing energy loss. A 48V inverter offers the highest efficiency, ensuring your solar system operates at peak



performance, providing reliable and sustainable energy. The maintenance of your inverter is essential to ensure your solar system operates efficiently and lasts for years.

Do you need a 48 volt pure sine power inverter?

When you're in need of consistent power output that boasts efficiency at higher loads, you need an AIMS Power 48-volt pure sine power inverter. [Show More >](#) Create a backup power system with 48-volt pure sine power inverters that are ideal for reliably powering a large range of electronics, tools and appliances.



## 48v 24a inverter

---



**Amazon : Solar Inverter UL1741 12KW 48V Solar Hybrid Inverter ...**

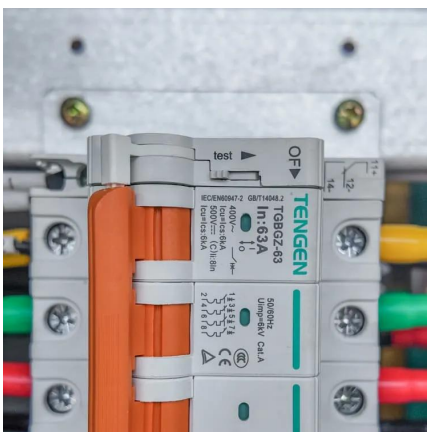
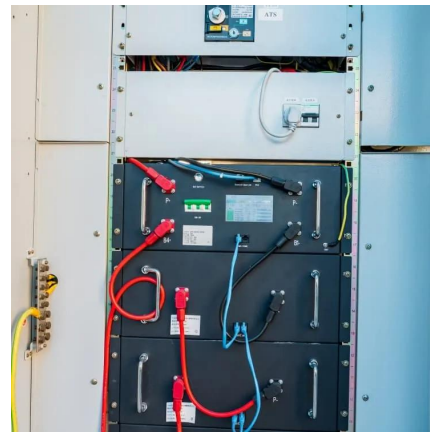
? ?GS Series Inverter ?Pure Sine Wave Inverter is a combination of an inverter, AC charger, Mppt solar charger and Auto-transfer switch into one complete system. The most common use ...

[WhatsApp](#)

### [48V Inverter Off-Grid Solar Inverters & Power Systems](#)

Find 48V Inverter off-grid solar inverters & power systems at Lowe's today. Shop off-grid solar inverters & power systems and a variety of electrical products online at Lowes .

[WhatsApp](#)



### [What is the Difference Between 24v and 48v Inverter?](#)

24 Volt inverters work at the standard household voltage of 120 volts, and 48V inverter can work at higher voltages in addition to running appliances that are capable of 24v.

[WhatsApp](#)

[Amazon : Solar Inverter UL1741 12KW 48V Solar Hybrid ...](#)

? ?GS Series Inverter ?Pure Sine Wave Inverter is a combination of an inverter, AC charger, Mppt solar charger and Auto-transfer switch into one



complete system. The most common use ...

[WhatsApp](#)



### [48V Solar Inverters: 2025 Buyer's Guide & Top Picks ?](#)

A 48V solar inverter is a cornerstone of efficient off-grid or hybrid energy systems. Whether for daily household use or commercial backup power, opting for an MPPT-equipped, ...

[WhatsApp](#)



### **Amazon : BTURYT 6000W Pure Sine Wave Inverter 12V 24V 48V ...**

[High efficiency conversion]: The inverter provides 12V 24V 48V 60V DC to 110/120V 220V/230V AC pure sine wave technology, with high conversion efficiency (>90%), low no-load loss, and ...

[WhatsApp](#)



## **Contact Us**

For catalog requests, pricing, or partnerships, please visit:  
<https://www.straighta.co.za>