

48V inverter with fan





Overview

What is a 48 watt inverter?

48V 2000W power inverter with universal socket and USB port, modified sine wave or pure sine wave output waveform are available. Option for 110V/120V or 220V/230V/240V AC 50Hz/60Hz, suitable DC to AC inverter for home use to charge TV, laptop, fans, lights and other appliances. Storage temperature of this 2000 watt inverter between -30 °C to +70 °C.

How does a 48V power inverter work?

In terms of functionality, a 48V power inverter typically consists of several key components. These include a DC input, an inverter circuit that converts DC to AC power, control electronics for regulating the output voltage and frequency, and output sockets or terminals to connect AC-powered devices.

What is the working temperature of a 48V 5000W inverter?

Working temperature of this 48V 5000W inverter between -10 °C to 50 °C. A 48V power inverter is a device used to convert direct current (DC) electrical power from a 48-volt battery or DC power source into alternating current (AC) power. In terms of functionality, a 48V power inverter typically consists of several key components.

What is a 48 volt pure sine wave inverter?

Low price 48 volt pure sine wave inverter output frequency 50Hz or 60Hz, convert DC power from a battery into AC power, AC voltage 110V/220V/100V/230V/240V are available in Home Power Inverter, clear digital LCD display, it is widely used in RV, coffee machine and air conditioner.

Should I use a 48 volt inverter?

You may decide to use them even for appliances that are 2000Watts. When you use a 48-Volts inverter, you can use regular and more flexible connectors



to connect the inverter to the battery bank. This is so because the thinner the wire, the higher the resistance.

What is the difference between 150W and 48V pure sine wave inverter?

150W pure sine wave inverter adopts aluminum shell, makes the true sine inverter sturdier and helps it dissipate heat, which means it lasts longer. 48V DC to AC pure sine wave inverter can provide smooth, seamless and clean power, low noise and high safety. Led light and USB output port are equipped with this 48V pure sine inverter.



48V inverter with fan



AIMS Power 7,000 Watt Modified Sine Inverter, 48V DC to 240V ...

The AIMS Power 7000W Modified Sine Inverter accepts a 48V input and produces 240Vac of modified sine wave AC power. With the AIMS Power industrial grade line, you get a ...

[WhatsApp](#)

AIMS Power PWRINV500048W Power Inverter, 5000 Watt Max ...

This 5000 watt 48 Volt DC power inverter by AIMS Power converts DC (direct current) power stored by batteries into AC (alternating current) electricity that can be used to run practically ...

[WhatsApp](#)



48v Inverter, 48v DC to 120v/220v AC Power Inverter , inverter

1500W 48V DC to AC power inverter for sale online, efficient and reliable. Inverter 1500 watt price is reasonable. This modified sine wave inverter outputs 110V/220V AC 50Hz/60Hz, comes with ...

[WhatsApp](#)

Felicity Solar 5KVA 48V Inverter

Advantage: 1. LCD Display, intuitively shows working performance 2. Low decibel cooling fan, high efficiency no noise 3. Fault alarm warning 4. Easy installation 5. Remote control 6. RS232 ...



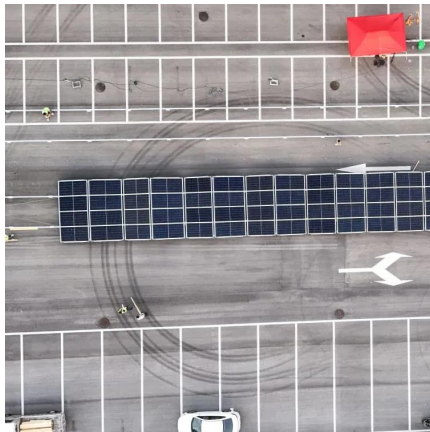
[WhatsApp](#)



AIMS Power PWRINV500048W Power Inverter, 5000 Watt Max ...

This 5000 watt 48 Volt DC power inverter by AIMS Power converts DC (direct current) power stored by batteries into AC (alternating current) electricity that can be used to run practically any household appliances ...

[WhatsApp](#)



Contact Us

For catalog requests, pricing, or partnerships, please visit:
<https://www.straighta.co.za>