

48V battery management system





Overview

What is a 48 V Battery Management System (BMS)?

Transform your battery management system with Infineon's best-in-class 48 V BMS solutions. Used for energy storage and supply to electrical systems in electric two- and three-wheelers and mild hybrid electric vehicles (MHEVs), an automotive 48 V battery management system (BMS) is in charge of computation, communication, monitoring, and protection.

What are the main functions of a battery management system (BMS)?

The main functions of the Battery Management System (BMS) are computation, data storage communication, and monitoring (SOC/ SOD, SOH, SOP, SOS, Temperature, coolant flow, Voltage, and current), and protection. For safety reasons, a Battery Disconnect Switch (BDS) is integrated into the BMS.

What is a 48 volt battery?

48 V batteries tend to be created using Li-ion multi-cell battery packs using 8-16 cells. From a safety perspective, but also to ensure the best efficiency and longest battery life these battery packs need to be carefully monitored and controlled.

What is the JK BMS 16S 48V 200A battery protection system?

The JK BMS 16S 48V 200A features a comprehensive protection system that sets new standards in battery safety and reliability. The system continuously monitors multiple parameters including cell voltage, current, and temperature, responding instantly to any abnormal conditions.

How many cells are in a 48 volt battery?

48 V batteries tend to be created using Li-ion multi-cell battery packs using 8-16 cells. From a safety perspective, but also to ensure the best efficiency and longest battery life these battery packs need to be carefully monitored



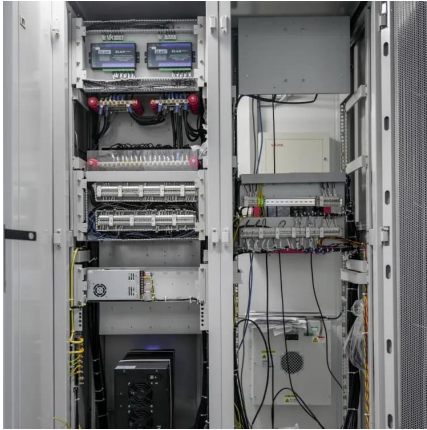
and controlled.

What is balancing technology in the JK BMS 16S 48V 200A?

The balancing technology implemented in the JK BMS 16S 48V 200A represents a significant advancement in battery management capability. The system employs an active balancing approach that efficiently transfers energy between cells, rather than just dissipating excess energy as heat.



48V battery management system



48V 100Ah LiFePO4 Lithium Battery with APP, Built-in 200A ...

Both indoor and outdoor use, easy to carry. Upgraded Cells & 200A BMS: Our 48V 100Ah LiFePO4 battery uses Grade A cell and 200A Intelligent Battery Management System (BMS) ...

[WhatsApp](#)

48V 100Ah LiFePO4 Lithium Battery, Built-in 200A BMS, Server ...

Both indoor and outdoor use, easy to carry. ?Upgraded Cells & 200A BMS?Our 48V 100Ah LiFePO4 battery uses Grade A cell and 200A Intelligent Battery Management ...

[WhatsApp](#)



48V Lead-Acid Battery BMS: In-Depth Explanation of Key ...

Today, we will explain the key technology and working principle of 48V lead-acid battery BMS under GERCHAMP, and reveal how it protects the safe and efficient operation of batteries. In ...

[WhatsApp](#)

[48 V Battery Management System \(BMS\) . Nexperia](#)

From a safety perspective, but also to ensure the best efficiency and longest battery life these battery packs need to be carefully monitored and



controlled. This requires accurate voltage, ...

[WhatsApp](#)



[Multicell 36-V to 48-V Battery Management System ...](#)

1 System Description This system design is for a 48-V nominal lithium-ion or lithium-iron phosphate battery management system (BMS) to operate over a range of approximately 36 V ...

[WhatsApp](#)



[Automotive battery management system \(BMS\)](#)

Used for energy storage and supply to electrical systems in electric two- and three-wheelers and mild hybrid electric vehicles (MHEVs), an automotive 48 V battery management system (BMS) ...

[WhatsApp](#)



BMS 48V: Advanced Battery Management System for Optimal ...

This sophisticated system monitors and controls various critical parameters of battery operations, including voltage, current, temperature, and state of charge. Operating at 48 volts, this BMS ...

[WhatsApp](#)





The Ultimate Guide to 48V Battery Management Systems: From ...

A 48V battery management system is an electronic system designed to monitor, control, and protect a 48V battery pack. Its core functions include real-time monitoring of ...

[WhatsApp](#)



Complete Guide: 12V/24V/48V/72V Batteries, LiFePO4 Cells, ...

Battery Management Systems (BMS) - The Core of Battery Safety. BMS ensures safe and efficient operation of lithium battery packs by monitoring charge/discharge, temperature, and ...

[WhatsApp](#)

LV/48V Battery Management Systems -- Munich Electrification

Enhance your low-voltage energy systems with our state-of-the-art Battery Management System. Experience increased battery performance, prolonged battery lifespan, and embrace a new ...

[WhatsApp](#)



[Design Of A 48V 13S Battery Management System For ...](#)

State of Charge (SOC) estimation plays a vital role in electrical vehicles' performance. With the help of estimated SOC the driving range, State of Health (SOH), energy and power limits can ...

[WhatsApp](#)



Contact Us

For catalog requests, pricing, or partnerships, please visit:
<https://www.straighta.co.za>